

A healthcare worker, an older woman with grey hair, is smiling while applying a bandage to a patient's leg. The patient is lying on a bed, covered with a white blanket. The healthcare worker is wearing a white short-sleeved coat and blue gloves. The background is a simple, light-colored wall.

Product Catalog

Wound Care 2024

The Mölnlycke logo consists of three green circles of varying sizes arranged in a triangular pattern above the company name "Mölnlycke" in a green, sans-serif font.

Mölnlycke®



Get to know the ö

We're "Mon • lik • a." We focus on helping care teams deliver their absolute best for patients. More specifically, we address some of the most persistent and stressful issues associated with routine care delivery. Pressure injuries, hospital-acquired infections, clinician injuries — all have devastating and very costly impacts on human lives and health systems.

The right medical solutions can make all the difference.

From our Biogel® surgical gloves, Mepilex® dressings and Hibiclens® patient bathing solutions to our smartly designed turning and positioning devices, Mölnlycke® products simply work better. They're more comfortable for the patient and often more efficient in terms of utilization.

The more you know about Mölnlycke, the more our difference becomes clear.

Table of Contents

Bordered Foam Dressings

Mepilex® Border Flex / Mepilex® Border Flex Oval	4
Mepilex® Border Flex Lite	5
Mepilex® Border Sacrum	6
Mepilex® Border Heel	7
Mepilex® Border Post-Op	8
Mepilex® Border Post-Op Ag	9
Mepilex® Border Ag / Mepilex® Border Sacrum Ag	10

Non-Bordered Foam Dressings

Mepilex® / Mepilex® Heel	11
Mepilex® Ag	12
Mepilex® Up	13
Mepilex® Lite	14
Mepilex® Transfer	15
Mepilex® Transfer Ag	16

Contact Layer Dressings

Mepitel® One	17
Mepitel®	18
Mepitel® Ag	19

Gelling Fibers and Alginates

Exufiber® Ag +	20
Exufiber®	21
Melgisorb® Plus	22
Melgisorb® Ag	23

Antimicrobial Wound Gel

Normlgel® Ag	24
--------------	----

Non-Adhesive Absorbent Dressings

Mesalt®	25
Alldress®	26
Mextra® Superabsorbent	27

Self-Adhesive Dressings

Mepore® / Mepore® Pro	28
Mepore® Film	29
Mepiform®	30
Mepitac®	31
Mefix®	32

Garments and Bandages

Setopress®	33
Tubifast® 2-Way Stretch	34
Tubifast® Garments	35
Tubigrip®	36
Dermafit®	37

Negative Pressure Therapy

Avance® Solo	38
--------------	----

Turning & Positioning

Mölnlycke® Z-Flo® Fluidized Positioner Adult	40
Mölnlycke® Z-Flo® Fluidized Positioner Neonatal	41
Mölnlycke® Tortoise® Sling System	42
Mölnlycke® Tortoise® Intuitive System	43
Mölnlycke® Z-Flex® Fluidized Heel Boot	44

Ordering Information

The information provided herein is not to be construed as the practice of medicine or substituted for the independent medical judgment of a patient's treating clinician. This information, including but not limited to suggestions for product selection and suggested use is based on generalizations and does not consider the unique characteristics of an individual patient. Each patient's clinician shall remain solely responsible for assessing patient, determining the appropriate treatment and managing treatment. For additional information, please refer to the applicable product insert or contact Mölnlycke® Health Care at 1-800-843-8497.

Mepilex® Border Flex

The self-adherent all-in-one bordered foam dressing



Track the spread of exudate without lifting dressing¹



Trap exudate containing bacteria away from wound²



Channel exudate to maximize capacity³

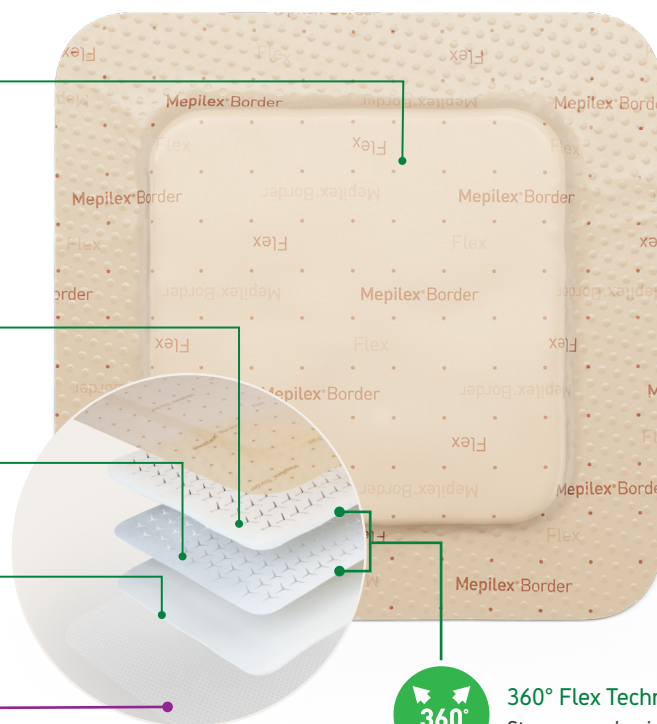


Absorb exudate without swelling⁴



Safetac® Technology for gentle dressing changes⁵

Safetac®
TECHNOLOGY



360° Flex Technology
Stays on and uniquely conforms

How Mepilex® Border Flex works

Mepilex Border Flex is a five-layer, bordered foam dressing that is highly conformable due to Flex Technology. It absorbs, channels and traps exudate and allows you to track progress.

Benefits of Mepilex® Border Flex

- Flex Technology provides excellent flexibility⁶ and conformability to avoid early detachment⁷
- Proven to handle more exudate* than other all-in-one foam dressings⁸
- Up to 7-day wear time⁹ with shower-proof dressing¹⁰
- For use on a wide range of chronic and exuding wounds, as well as for pressure injury prevention^{9, **}

Wear time

Mepilex Border Flex may be left in place for up to 7 days depending on the condition of the wound and surrounding skin.

*in vitro studies

**When used as part of an individualized, comprehensive pressure injury prevention protocol.

References: 1. Report PD-528872. 2. PD-537072-04 3. Report PD-52887 4. Report PD-525458. 5. White R et al. Evidence for atraumatic soft silicone wound dressing use. Wounds UK, 2005. 6. Report PD-528870-01. 7. PD-529747. 8. Report PD-527642-01. 9. Mepilex® Border Flex Instructions for Use. 10. Report PD-532095. 11. Tyson, Leigh. Poster Presentation, SAWC, San Antonio, TX.

Indications for use

Mepilex Border Flex is designed for a wide range of exuding wounds such as pressure ulcers, leg and foot ulcers, traumatic wounds (e.g. skin tears) and surgical wounds. Mepilex Border Flex can also be used on dry/necrotic wounds in combination with gels. Mepilex Border Flex reduces postoperative blistering and may also be used as part of a prophylactic therapy to help prevent skin damage, e.g. pressure ulcers.

Mepilex® Border Flex ordering information

Product Code	Size	Pcs/box	Pcs/case	HCPCS
595200	3" x 3" (7.5 x 7.5 cm)	5	50	A6212
595300	4" x 4" (10 x 10 cm)	5	50	A6212
595400	6" x 6" (15 x 15 cm)	5	50	A6213
595600	6" x 8" (15 x 20 cm)	5	50	A6213

Mepilex® Border Flex Oval ordering information

Product Code	Size	Pcs/box	Pcs/case	HCPCS
583300	5.1" x 6.3" (13 x 16 cm)	5	35	A6212
583400	6" x 7.5" (15 x 19 cm)	5	45	A6213
583500	3.1" x 4" (7.8 x 10 cm)	5	50	A6212

Mepilex® Border Flex Lite

The flexible, bordered foam lite dressing



360° Flex Technology

- Stays on and uniquely conforms
- Improves comfort^{1,2}
- Keeps the dressing in place^{1,2}



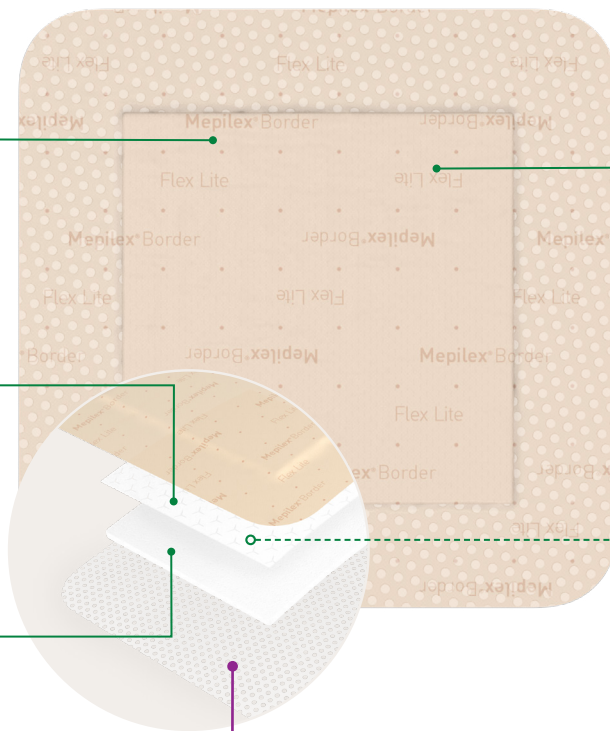
Spreading layer

- Distributes exudate evenly over a wide surface area to maximize exudate management⁹



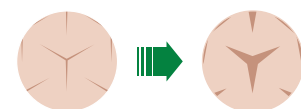
Foam layer

- Absorbs exudate and transports it to the spreading layer⁹
- The 4-layer construction works to absorb and channel exudate away from the wound bed⁹



Highly breathable backing film

- Exudate Progress Monitor lets you track and record exudate progress³
- Backing film provides a barrier to microorganisms larger than 25nm⁴
- Water resistant so your patients can shower⁵



Flex Technology

- Expands to allow movement



Safetac
TECHNOLOGY

Safetac® Technology

- Less painful dressing changes⁶ and reduced risk of maceration⁷⁻⁸

How Mepilex® Border Flex Lite works

Mepilex Border Flex Lite is a thin version of Mepilex Border Flex, ideal for wounds without heavy exudate. It absorbs and channels exudate and allows a clinician to track progress.

Benefits of Mepilex® Border Flex

- For management of non-to-moderately exuding wounds
- Broad selection of sizes
- Flex Technology provides excellent flexibility⁵ and conformability to avoid early detachment⁶

Wear time

Mepilex Border Flex Lite may be worn for several days. Change the dressing before it is fully saturated, at signs of leakage or as indicated by clinical practice.

Indications for use

Mepilex Border Flex Lite is designed for the management of a wide range of non-to-moderately exuding wounds such as leg and foot ulcers; pressure injury, surgical and traumatic wounds such as abrasions, blisters and skin tears and may be used for protection of compromised and/or fragile skin.

Mepilex® Border Flex Lite ordering information

Product Code	Size	Pcs/box	Pcs/case	HCPCS
581011	1.6" x 2" (4 x 5 cm)	10	70	A6212
581101	2" x 5" (5 x 12.5 cm)	5	65	A6212
581200	3" x 3" (7.5 x 7.5 cm)	5	70	A6212
581300	4" x 4" (10 x 10 cm)	5	50	A6212
581500	6" x 6" (15 x 15 cm)	5	50	A6213

*in vitro studies

References: 1. Report PD-528872. 2. Report PD-52887. 3. Report PD-525458. 4. White R et al. Evidence for atraumatic soft silicone wound dressing use. Wounds UK, 2005. 5. Report PD-528870-01. 6. PD-529747.

Mepilex® Border Sacrum

The proven, 5 layer foam dressing for prevention¹ and management of wounds

Handling tabs

- For easy handling during skin assessments

Wider sacral coverage

- Compared to other dressings

Slightly thicker borders*

- For easier handling and better adhesion

Five full layers

- Help deflect extrinsic forces including friction and shear

Safetac® Technology

- Reduces risk of maceration^{2,3}

Safetac®
TECHNOLOGY

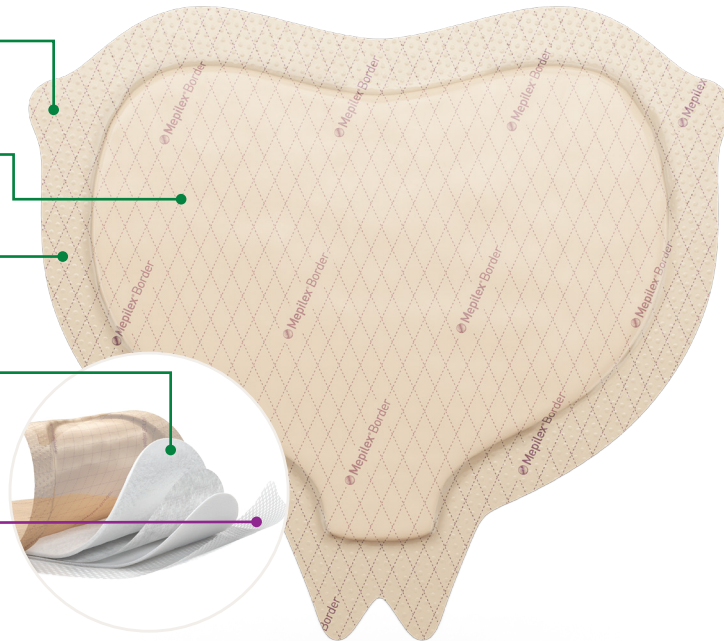
Structural integrity

- For protection even when wet⁴

Deep Defense® technology

For protection from the combined effect of the extrinsic forces responsible for pressure injury:

- Strength in the patient sliding/shearing direction⁵
- Flexibility in the horizontal direction⁵



How Mepilex® Border Sacrum works

Unlike other dressings, the proprietary Mepilex Border Sacrum is the only dressing with Deep Defense™ technology, providing an optimal balance of strength and flexibility. This not only allows the dressing to provide optimal protection against shear in combination with other extrinsic factors, but it also helps to maintain its protective properties even with the absorption of sweat.⁵ When used for wound management, the Mepilex Border Sacrum is designed for a wide range of exuding wounds such as sacral pressure injury. It can also be used on dry/necrotic wounds in combination with gels.

Benefits of Mepilex® Border Sacrum

- Shaped to fit the sacral area
- Handling tabs for ease of application and removal
- Absorbs moderate to high amounts of exudate
- Optimized protection and sealing at gluteal cleft
- Can be repositioned without losing its adherent properties
- Moisture proof and bacteria barrier*film backing

Wear time

Mepilex Border Sacrum may be left in place for several days depending on the condition of the wound and surrounding skin, or as indicated by accepted clinical practice.

Indications for use

Mepilex® Border is designed for a wide range of exuding wounds such as pressure ulcers, leg and foot ulcers and traumatic wounds, e.g. skin tears and surgical wounds. Mepilex® Border can also be used on dry/necrotic wounds in combination with gels. Mepilex® Border may be used as part of a prophylactic therapy to help prevent skin damage, e.g. pressure ulcers, postoperative blistering.

Mepilex® Border Sacrum ordering information

Product Code	Size	Pcs/box	Pcs/case	HCPCS
282055	6.3" x 7.9" (16 x 20 cm)	10	50	A6213
282455	8.7" x 9.8" (22 x 25 cm)	10	40	A6213

References: 1. Nahla Tayyib, RN, MN, BN, Fiona Coyer, RN, PhD, MScNsg, CritCareCert, PGCEA. Effectiveness of Pressure Ulcer Prevention Strategies for Adult Patients in Intensive Care Units: A Systematic Review. Worldviews on Evidence-Based Nursing, 2016; 00:0, 1-13. 2. Wiberg A.B. et al. Preventing maceration with a soft silicone dressing: in-vitro evaluations. Poster presented at the 3rd Congress of the WUWHs, Toronto, Canada, 2008. 3. Meaume, S., Van De Looerbosch, D., Heyman, H., et al. S. A study to compare a new self-adherent soft silicone dressing with a self-adherent polymer dressing in stage II pressure injury. Ostomy Wound Management 2003; 49 (9): 44-51 4. Mölnlycke® Health Care. Test Report - Tensile strength of dressings with different Moisture levels. LIMS ID: 20160808-003-app1. 5. Allen. Finite element analysis studying the effect of different prevention dressings on protecting soft tissues from high stresses and deformation. Ref No. 001. Data on file. 2017. 6. Mölnlycke® Health Care, Test Report, PD-508784 Rev: 01

* Compared with original Mepilex® Border Sacrum

† Microbes larger than 25 nm.

Mepilex® Border Heel

All-in-one, heel-shaped dressing for prevention** and management of wounds

Five full layers

- Help deflect extrinsic forces including friction and shear

Safetac® Technology

Safetac®
TECHNOLOGY

- Reduces risk of maceration^{2,3}

Coverage of the malleoli

Slightly thicker borders*

- Easy handling
- Better adhesion

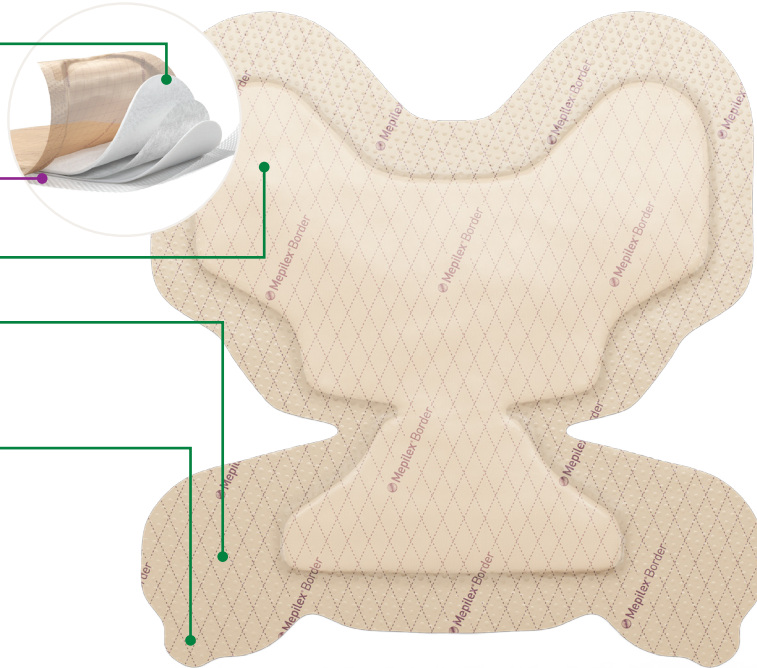
Handling tabs

- For easier heel checks†

Deep Defense™ technology

For protection from the combined effect of the extrinsic forces responsible for pressure injury:³

- Strength in the patient sliding/shearing direction
- Flexibility in the horizontal direction



How Mepilex® Border Heel works

Each of the unique five layers of the Mepilex Border Heel serves a specific purpose, adding to its strength, durability and absorbency. No other dressing on the market exhibits these same properties - or the published, peer-reviewed results - in pressure injury prevention. The design of the Mepilex Border Heel is unique in both absorbing and distributing pressure, shear and friction.^{3,4}

When used for management of wounds, Mepilex Border Heel effectively absorbs and retains exudate² and maintains a moist wound environment. The Safetac Technology layer seals the wound edges, preventing exudate leakage onto the surrounding skin, thus minimizing the risk of maceration.¹ The Safetac Technology layer allows the dressing to be changed without damaging the wound or surrounding skin,¹ or exposing the patient to additional pain.⁵

Benefits of Mepilex® Border Heel

- All-in-one and self-adherent - no secondary fixation needed
- Shaped to cover the back, sides and bottom of the heel - no need to cut or adapt
- Safetac Technology minimizes pain and trauma at dressing changes⁵
- Can remain in place for several days
- Can be repositioned without losing its adherent properties
- Moisture proof and bacteria resistant (> 25nm) film backing⁶

Wear time

Mepilex Border Heel may be left in place for several days depending on the condition of the wound and surrounding skin, or as indicated by accepted clinical practice.

Indications for use

Mepilex Border is designed for a wide range of exuding wounds such as pressure ulcers, leg and foot ulcers and traumatic wounds, e.g. skin tears and surgical wounds. Mepilex Border can also be used on dry/necrotic wounds in combination with gels. Mepilex® Border may be used as part of a prophylactic therapy to help prevent skin damage, e.g. pressure ulcers, postoperative blistering.

Mepilex® Border Heel ordering information

Product Code	Size	Pcs/box	Pcs/case	HCPCS
282790	8.7" x 9.1" (22 x 23 cm)	10	30	A6210

References: 1. Wiberg A.B. et al. Preventing maceration with a soft silicone dressing: in-vitro evaluations. Poster presented at the 3rd Congress of the WUWHs, Toronto, Canada, 2008. 2. Meaume, S., Van De Looerbosch, D., Heyman, H., et al. S. A study to compare a new self-adherent soft silicone dressing with a self-adherent polymer dressing in stage II pressure injury. *Ostomy Wound Management* 2003; 49 (9): 44-51 3. Levy A., Frank, M.B., Gefen A. The biomechanical efficacy of dressings in preventing heel injury. *J Tissue Viability* 2015; 24: 1, 1-11. 4. Call E. et al. Enhancing pressure prevention using wound dressings: What are the modes of action? *International Wound Journal*, July 30 2013. 5. White R. Evidence for atraumatic soft silicone wound dressing use. *Wounds UK*, Nov 20015, pp104-109 6. Mölnlycke® Health Care, Test Report PD-508784 Rev: 01

* When used as part of an individualized, comprehensive pressure injury prevention protocol

** Compared with original Mepilex® Border Heel

†Microbes larger than 25 nm.

Mepilex® Border Post-Op

The flexible, all-in-one post-op dressing

Supports longer wear times and low frequency^{1,2}

- Shower-proof seal and bacteria barrier (microbes larger than 25 nm)[†]
- Ultra-absorbent material absorbs more blood than any other current leading dressing on the market⁴
- Transparent border allows inspection without removal

Safetac®
TECHNOLOGY

Safetac® Technology

- Clinically shown to minimize dressing-related skin damage and reduce pain when removing the dressing^{1,9}
- Interface adheres gently, maintaining skin integrity

Safetac
interface

Unique flex-cut pad

- Supports early patient mobilization⁵
- Stretches in all directions, conforming to the body even as it moves

How Mepilex® Border Post-Op works

Mepilex Border Post-Op is an all-in-one post-op dressing that effectively absorbs and retains exudate. The Safetac® interface minimizes painful wound and peri-wound skin damage at dressing removal.^{1,2,6} The Safetac interface seals the wound edges, preventing exudate from leaking onto surrounding skin, minimizing risk of maceration.⁶ The flex-cut pad gives high flexibility and good conformability over joints, such as knees or hips, promoting patient mobilization.¹

Benefits of Mepilex® Border Post-Op

- Minimizes skin damage, including blistering⁸
- Very high absorption capacity^{3,4} leading to fewer dressing changes^{1,2}
- High flexibility giving very good comfort and conformability⁷
- Can be lifted and adjusted without losing its adherent properties
- Wide transparent borders for easy wound area inspection
- Bacteria and viral barrier[†]
- Shower proof

Indications for use

Mepilex Border Post-Op is a self-adhesive, absorbent surgical dressing designed for exuding wounds. It is intended for acute wounds, such as surgical wounds, cuts and abrasions.

Mepilex® Border Post-Op ordering information

Product Code	Size	Pcs/box	Pcs/case	HCPCS
496100	2.5" x 3" (6 x 8 cm)	10	100	—
496200	3.5" x 4" (9 x 10 cm)	10	100	—
496300	4" x 6" (10 x 15cm)	10	100	A4649
496405	4" x 8" (10 x 20cm)	5	25	A4649
496455	4" x 10" (10 x 25cm)	5	30	A4649
496605	4" x 12" (10 x 30cm)	5	25	A4649
496650	4" x 14" (10 x 35cm)	5	55	A4649

Additional post-op SKUs located in Ordering Information.

References: 1. Bredow, J. et al. Randomized clinical trial to evaluate the performance of a flexible self-adherent absorbent dressing coated with a soft silicone layer compared to a standard wound dressing after hip, knee or spinal surgery in comparison to standard wound dressing. Poster presentation at 5th Congress of WUWHS, Florence, Italy 2016. 2. Zarghooni, K. et al. Is the use of modern versus conventional wound dressings warranted after primary knee and hip arthroplasty? Acta Orthopaedica Belgica 2015;81(4):768-775. 3. Feili, F. et al. Fluid Handling Properties of Post-Operative Wound Dressings. Data on file. 4. Feili, F. et al. Blood Absorption Capacity of Post-Operative Wound Dressings. Data on file. 5. Johansson C. et al. Preventing post-operative blisters following hip and knee arthroplasty, Wounds International, 2012. 6. White, R. Evidence for atraumatic soft silicone wound dressing use. 7. Van Overschelde P. et al. Effect of two modern dressing on patient outcome after primary hip and knee arthroplasty: a prospective, a randomised controlled study. Oral presentation at the WUWHS conference, Florence, 2016. 8. Korber, K. Clinical Evaluation of a New Silver Soft Silicone Postoperative Dressing in Total Knee and Hip Arthroplasty. POAS Fall 2017. 9. Dykes, P.J., et al. Effects of adhesive dressings on the stratum corneum of skin. J Wound Care 2001; 10: 2, 7-10.

[†]Microbes larger than 25 nm.

Mepilex® Border Post-Op Ag

The flexible and antimicrobial all-in-one post-op dressing

Shower-proof seal

- With bacteria and viral barrier†

Unique flex-cut pad

- Supports early patient mobilization⁸
- Stretches in all directions, conforming to the body even as it moves

Ultra-absorbent material

- Absorbs more blood than any other current leading dressing on the market⁷

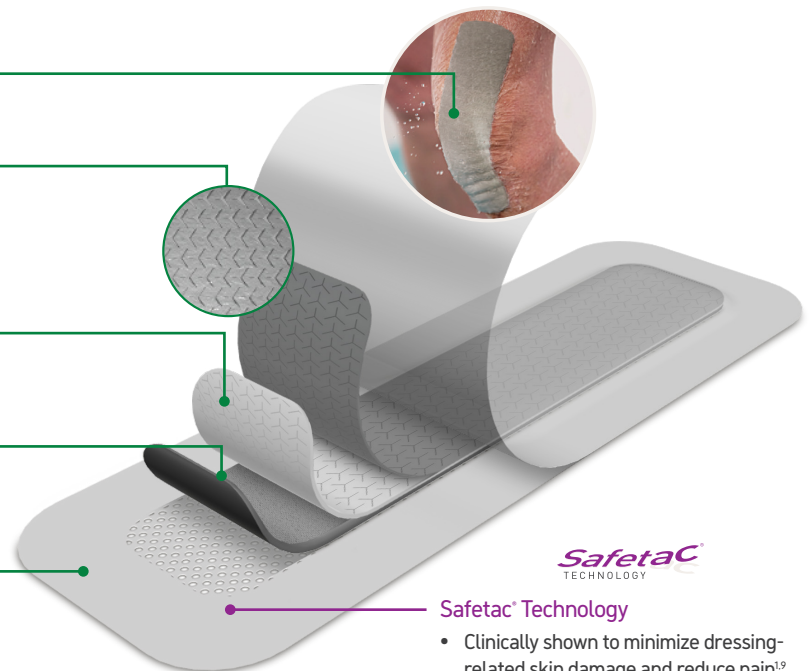
Rapid sustained release ionic silver

- **Antimicrobial activity** within 30 minutes with sustained effect up to 7 days³⁻⁵

Transparent border

- Allows inspection without removal

High Fluid Handling Capacity which may support longer wear times and low frequency as compared to conventional dressings^{1,3}



Safetac® Technology

- Clinically shown to minimize dressing-related skin damage and reduce pain^{1,9}
- Interface adheres gently, maintaining skin integrity

How Mepilex® Border Post-Op Ag works

Mepilex Border Post-Op Ag is an all-in-one post-op dressing that effectively absorbs and retains exudate. The Safetac interface minimizes painful wound and peri-wound skin damage at dressing removal.^{1,2,9} The Safetac interface seals the wound edges, preventing exudate from leaking onto surrounding skin, minimizing risk of maceration.⁹ The flex-cut pad gives high flexibility and good conformability over joints, such as knees or hips, promoting patient mobilization.¹

Mepilex Border Post-Op Ag inactivates wound-related pathogens within 30 minutes with sustained effect up to 7 days.³⁻⁵ By reducing the number of microorganisms, Mepilex Border Post-Op Ag may also reduce odor.

Benefits of Mepilex® Border Post-Op Ag

- Minimizes skin damage, including blistering^{1,3}
- Effective, sustained release of silver^{3,4,5}
- Very high absorption^{6,7} capacity leading to fewer dressing changes¹
- High flexibility giving very good comfort and conformability¹⁰
- Can be lifted and adjusted without losing its adherent properties
- Wide, transparent borders for easy wound area inspection
- Bacteria and viral barrier†
- Shower-proof

Indications for use

Mepilex Border Post-Op Ag dressing is indicated for the management of exuding wounds such as surgical and traumatic wounds. Mepilex Border Post-Op Ag can also be used under compression bandaging. Silver sulfate present in the dressing helps reduce microbial colonization in the dressing.

Mepilex® Border Post-Op Ag ordering information

Product Code	Size		Pcs/box	Pcs/case	HPCPS
498100	2.5"x3" (6x8 cm)		5	20	—
498200	3.5"x4" (9x10 cm)		5	50	—
498300	4"x6" (10 x 15cm)		5	70	A6212
498400	4"x8" (10 x 20cm)		5	25	A6212
498450	4"x10" (10 x 25cm)		5	35	A6212
498600	4"x12" (10 x 30cm)		5	25	A6213
498650	4"x14" (10 x 35cm)		5	60	A6213

Additional post-op SKUs located in Ordering Information

References: 1. Bredow, J. et al. Randomized clinical trial to evaluate the performance of a flexible self-adherent absorbent dressing coated with a soft silicone layer compared to a standard wound dressing after hip, knee or spinal surgery in comparison to standard wound dressing. Poster presentation at 5th Congress of WUWHs, Florence, Italy 2016. 2. Zarghooni, K. et al. Is the use of modern versus conventional wound dressings warranted after primary knee and hip arthroplasty? Acta Orthopaedica Belgica 2015;81(4):768-775. 3. Data on file. Laboratory test 20151026-005. 4. Data on file. Laboratory test 20151109-002. 5. Data on file. Laboratory test 20151110-007. 6. Feili, F. et al. Fluid Handling Properties of Antimicrobial Post-Operative Wound Dressings. Data on file. 7. Feili, F. et al. Blood Absorption Capacity of Post-Operative Wound Dressings. Data on file. 8. Johansson C et al. Preventing post-operative blisters following hip and knee arthroplasty. Wounds International, 2012. 9. White, R. Evidence for atraumatic soft silicone wound dressing use. Wounds UK 2005; 1: 3, 104-109. 10. Van Overschelde P. et al. Effect of two modern dressing on patient outcome after primary hip and knee arthroplasty: a prospective, a randomised controlled study. Oral presentation at the WUWHs conference, Florence, 2016. 11. Data on file. Laboratory test 20151125-003. 12. Dykes, P.J., et al. Effects of adhesive dressings on the stratum corneum of skin. J Wound Care 2001; 10: 2, 7-10. 13. Lab report 2015 1125-003

†Microbes larger than 25 nm.

The self-adherent, all-in-one, antimicrobial bordered foam dressing

Safetac® Technology



Minimizes patient pain and trauma to the wound and surrounding skin at removal while reducing the risk of maceration¹⁻³

Backing film

- Provides moisture, viral and bacteria barrier¹
- Has high permeability to allow effective moisture vapor transfer

Non-woven layer

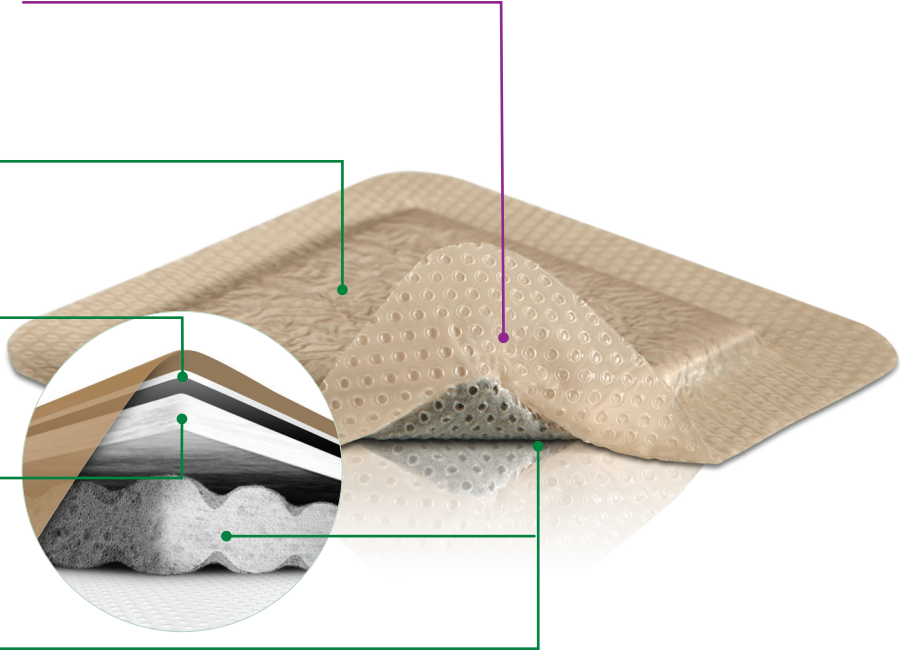
- Helps spread fluid for better vapor transmission
- Colored grey to distinguish the Ag version from Mepilex® Border Flex

The super absorbent layer

- Absorbs and stores exudate from the pad below it, keeping it safely away from the wound and surrounding skin

Compressed silver foam

- Absorbs and spreads exudate
- Allows silver to be released



How Mepilex® Border Ag works

Mepilex Border Ag is an antimicrobial, all-in-one foam dressing that effectively absorbs and retains exudate while maintaining a moist wound environment. The Safetac Technology layer seals the wound edges, which prevents the exudate from leaking onto the surrounding skin and minimizes the risk of maceration.³ The Safetac Technology layer allows the dressing to be changed without damaging the wound or surrounding skin or exposing the patient to additional pain.¹

Mepilex Border Ag starts to inactivate wound-related pathogens within 30 minutes with sustained effect up to 7 days.⁴ By reducing the number of microorganisms, Mepilex Border Ag may also reduce odor.

Benefits of Mepilex® Border Ag

- Minimizes pain and trauma at dressing change¹
- Effective, sustained release of silver⁵
- Self-adherent - no secondary fixation required
- Promotes patient comfort during wear
- Low potential for skin irritation and allergy
- Barrier to outside moisture, viruses and bacteria¹

Wear time

Mepilex Border Ag may be left in place for up to 7 days, depending on the patient, the condition of the wound and surrounding skin or as indicated by accepted clinical practice.

Indications for use

Mepilex Border Ag dressing is indicated for the management of exuding wounds such as leg and foot ulcers, pressure injuries, traumatic and surgical wounds, superficial and partial thickness burns. Mepilex® Border Ag can also be used under compression bandaging. Silver sulfate present in the dressing helps reduce microbial colonization on the dressing.

Mepilex® Border Ag ordering information

Product Code	Size	Pcs/box	Pcs/case	HCPCS
395290	3" x 3" (7.5 x 7.5 cm)	5	70	A6212
395390	4" x 4" (10 x 10 cm)	5	50	A6212
395490	6" x 6" (15 x 15 cm)	5	50	A6213
395690	6" x 8" (15 x 20 cm)	5	45	A6213
395790	4" x 10" (10 x 25 cm)	5	35	A6212
395890	4" x 8" (10 x 20 cm)	5	35	A6212
395990	4" x 12" (10 x 30 cm)	5	25	A6213

Mepilex® Border Sacrum Ag				
382090	7.2" x 7.2" (18 x 18 cm)	5	40	A6213
382490	9.2" x 9.2" (23 x 23 cm)	5	25	A6213

References: 1. White R. et al. Evidence for atraumatic soft silicone wound dressing use. Wounds UK, 2005. 2. Dykes PJ. The effect of adhesive dressing edges on cutaneous irritancy and skin barrier function. J wound Care 2007; 16(3):97-100. 3. Wiberg A.B. et al. Preventing maceration with a soft silicone dressing: in-vitro evaluations. Poster presented at the 3rd Congress of the WUWHS, Toronto, Canada, 2008. 4. Mölnlycke Mepilex® Ag Product Data Sheet Report PD-358735-10 5. Data on file

†Microbes larger than 25 nm.

The absorbent, conformable foam dressing

Safetac® Technology



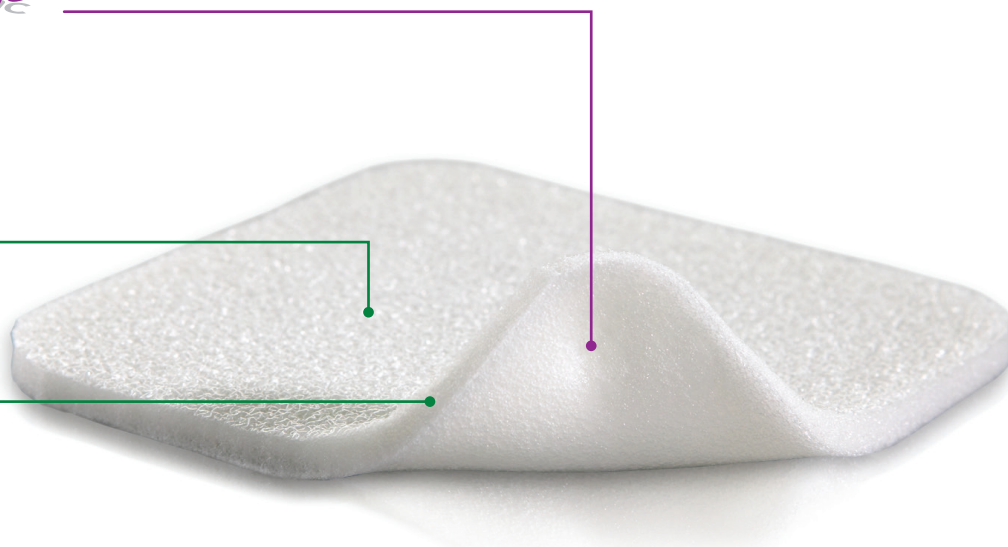
- Reduces pain and trauma during dressing change¹
- Does not adhere to the moist wound bed but to dry skin only
- Seals the wound margins and reduces risk of maceration²

Polyurethane backing film

- Breathable
- Moisture proof
- Bacteria and viral barrier†

Polyurethane foam pad

- Absorbs exudate
- Conformable
- May be used under compression



How Mepilex® works

Mepilex is a soft and highly conformable foam dressing that absorbs exudate and maintains a moist wound environment.

The Safetac Technology layer seals the wound edges, preventing the exudate from leaking onto the surrounding skin, thus minimizing the risk of maceration.² The Safetac Technology layer allows the dressing to be changed without damaging the wound or surrounding skin or exposing the patient to additional pain.¹

Benefits of Mepilex®

- Minimizes pain and trauma at dressing changes¹
- Stays in place allowing easy application of compression or retention bandages
- Well suited for use under compression bandages
- May be cut to suit various wound shapes and difficult-to-dress locations
- Promotes patient comfort during wear
- May remain in place for several days depending on the condition of the wound
- May be adjusted without losing its adherent properties

Wear time

Mepilex may be left in place for several days depending on the condition of the wound and surrounding skin, or as indicated by accepted clinical practice.

Indications for use

Mepilex is intended for a wide range of exuding wounds such as leg and foot ulcers, pressure ulcers and traumatic wounds, e.g. skin tears and secondary healing wounds.

Mepilex can be used as a protection of compromised and/or fragile skin and may also be used as part of a prophylactic therapy to help prevent skin damage, e.g. pressure ulcers.

Mepilex® ordering information

Product Code	Size	Pcs/box	Pcs/case	HCPCS
294199	4" x 4" (10 x 10 cm)	5	70	A6209
294090	4" x 5" (10 x 12 cm)	5	50	A6210
294299	4" x 8" (10 x 20 cm)	5	45	A6210
294399	6" x 6" (15 x 15 cm)	5	25	A6210
294499	8" x 8" (20 x 20 cm)	5	20	A6211
294500	8" x 20" (20 x 50 cm)	2	12	A6211

Mepilex® Heel ordering information



Product Code	Size	Pcs/box	Pcs/case	HCPCS
288100	5" x 8" (13 x 20 cm)	5	25	A6210

References: 1. White R. et al. Evidence for atraumatic soft silicone wound dressing use. Wounds UK, 2005. 2. Wiberg A.B. et al. Preventing maceration with a soft silicone dressing: in-vitro evaluations. Poster presented at the 3rd Congress of the WUWHHS, Toronto, Canada, 2008.

†Microbes larger than 25 nm.

The absorbent, conformable, antimicrobial foam dressing

Safetac® Technology

- Reduces pain and trauma during dressing change¹
- Does not adhere to the moist wound bed but to dry skin only
- Seals the wound margins and reduces risk of maceration²



Polyurethane foam pad

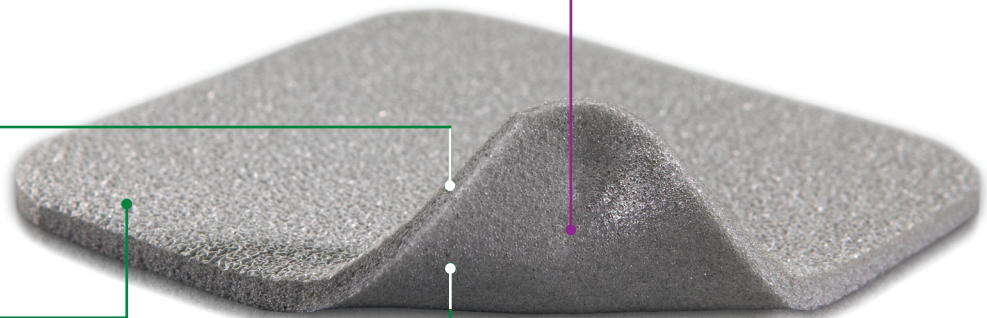
- Absorbs exudate
- Conformable
- May be used under compression

Polyurethane backing film

- Breathable
- Moisture proof
- Bacteria and viral barrier¹

Powerful silver performance

- Antimicrobial activity within 30 minutes
- Sustained effect for up to 7 days³



How Mepilex® Ag works

Mepilex Ag is a soft and highly conformable, antimicrobial foam dressing that absorbs exudate and maintains a moist wound environment. The Safetac Technology layer seals the wound edges, preventing the exudate from leaking onto the surrounding skin, thus minimizing the risk of maceration.³ The Safetac Technology layer allows the dressing to be changed without damaging the wound or surrounding skin or exposing the patient to additional pain.

Mepilex Ag starts to inactivate wound-related pathogens within 30 minutes with sustained effect up to 7 days.³ By reducing the number of microorganisms, Mepilex® Ag may also reduce odor.

Benefits of Mepilex® Ag

- Minimizes pain and trauma at dressing changes¹
- Stays in place allowing easy application of compression or retention bandages
- Well suited for use under compression bandages
- May be cut to suit various wound shapes and difficult-to-dress locations
- Promotes patient comfort during wear
- May remain in place for several days depending on the condition of the wound
- May be adjusted without losing its adherent properties
- Low potential for skin irritation and allergy

Wear time

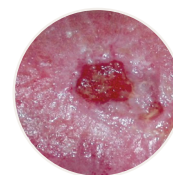
Mepilex Ag may be left in place for up to 7 days depending on the condition of the wound and surrounding skin, or as indicated by accepted clinical practice.

Indications for use

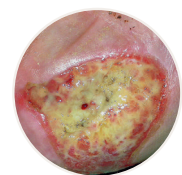
Mepilex Ag Dressing is indicated for the management of low to moderately exuding wounds such as leg and foot ulcers, pressure injuries and partial thickness burns. Silver sulphate present in the dressing helps reduce microbial colonization on the dressing.



Partial thickness burn



Infected leg ulcer



Pressure injury

Mepilex® Ag ordering information

Product Code	Size	Pcs/box	Pcs/case	HCPCS
287100	4" x 4" (10 x 10 cm)	5	70	A6209
287090	4" x 5" (10 x 12 cm)	5	70	A6210
287200	4" x 8" (10 x 20 cm)	5	45	A6210
287300	6" x 6" (15 x 15 cm)	5	25	A6210
287400	8" x 8" (20 x 20 cm)	5	20	A6211
287500	8" x 20" (20 x 50 cm)	2	10	A6211

References: 1. White R. et al. Evidence for atraumatic soft silicone wound dressing use. Wounds UK, 2005. 2. Wiberg A.B. et al. Preventing maceration with a soft silicone dressing: in-vitro evaluations. Poster presented at the 3rd Congress of the WUWHS, Toronto, Canada, 2008. 3. Mölnlycke® Mepilex® AG Product Data Sheet Report PD-358735-10

Mepilex® Up

The thin, absorbent and conformable foam dressing that minimizes the risk of leakage

Low profile polyurethane foam pad

- Manages high fluid volumes for a long period¹
- Highly conformable
- May be used under compression¹
- May be cut to fit

Dimpled surface pattern

- Patented compressed foam structure
- Enables dressing to spread fluid evenly in all directions^{1,2}
- Minimizes risk of leakage¹

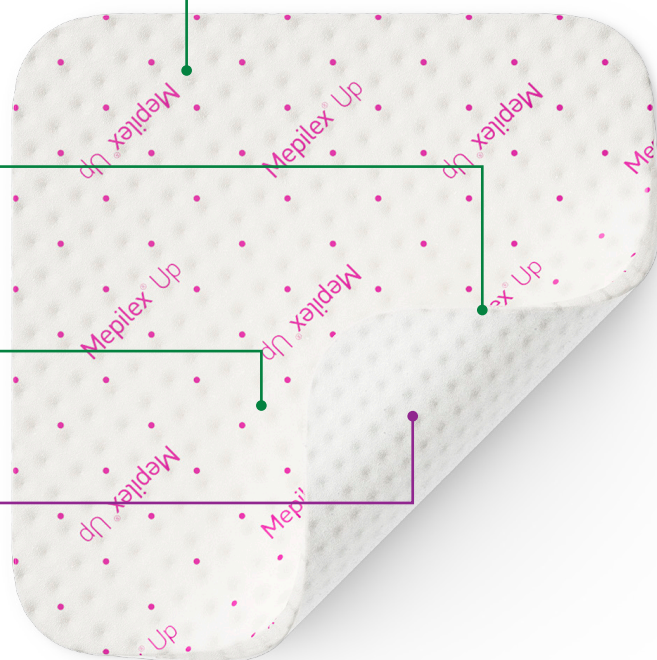
Polyurethane backing film

- Breathable
- Water resistant
- Secures fluid and evaporates excess moisture

Safetac® Technology



- Reduces pain and trauma during dressing changes³
- Does not adhere to the moist wound bed but to dry skin only
- Seals the wound margins and reduces the risk of maceration⁴



How Mepilex® Up works

Mepilex Up is a thin and highly conformable, non-bordered foam dressing that absorbs exudate even under compression.¹ The patented dimpled surface has the capability of spreading fluids evenly in all directions in the dressing, even against the forces of gravity.¹ Mepilex Up effectively manages high volumes of fluid for a long period of time due to the spreading properties which may contribute to a long wear time and fewer dressing changes.¹

The Safetac Technology layer seals the wound edges, preventing the exudate from leaking onto the surrounding skin, thus minimizing the risk of maceration.⁴ The Safetac Technology layer allows the dressing to be changed without damaging the wound or surrounding skin or exposing the patient to additional pain.³

Benefits of Mepilex® Up

- Long wear time and fewer dressing changes¹
- Minimized pain and trauma at dressing changes³
- May be cut to suit various wound shapes and difficult-to-dress areas
- Minimized risk of leakage, even under compression¹
- Higher fluid handling capacity than other foam dressings²
- Promotes patient comfort during wear⁵
- Potentially improved social confidence due to minimized risk of leakage⁶
- Lower cost of care when dressing changes are reduced**

Wear time

Mepilex Up may be left in place for several days depending on the condition of the wound and surrounding skin or as indicated by accepted clinical practice.

Indications for use

Mepilex Up is intended for the management of a wide range of exuding wounds in all healing stages such as chronic wounds, e.g. leg ulcers, foot ulcers and pressure ulcers, and traumatic wounds, e.g. skin tears and secondary healing wounds.

Mepilex® Up ordering information

Product Code	Product Description	Units per Box	Units per Case	HCPCS
212199	4" x 4" (10 x 10 cm)	10	40	A6209
212299	4" x 8" (10 x 20 cm)	10	30	A6210
212399	6" x 6" (15 x 15 cm)	10	30	A6210
212499	8" x 8" (20 x 20 cm)	10	30	A6211

** Mepilex Up effectively manages high volumes of fluid for a long period of time due to the unique spreading properties which may contribute to a long wear time and fewer dressing changes. (Molnlycke Data on File, 2022). Fewer dressing changes can lead to lower costs of care¹.

References: 1. Molnlycke Health Care. Test report PD-701547. Data on file. 2. Molnlycke Health Care. Test report PD-701546. Data on file. 3. Gee Kee E.L. et al. Randomized controlled trial of three burns dressings for partial thickness burns in children. Burns, 2014. 4. Wiberg A.B. et al. Preventing maceration with a soft silicone dressing: in-vitro evaluations. Poster presented at the 3rd Congress of the WUWHS, Toronto, Canada, 2008. 5. Weaver, G., Crawford, K. The use of Mepilex on Dehiscent Amputation Wounds. Wounds UK 2007; 3(1). 6. Molnlycke Health Care. Data on file. 2022. 7. World Union of Wound Healing Societies (WUWHS) Consensus Document. Wound Exudate: effective assessment and management. Wounds International, 2019.

†Microbes larger than 25 nm.

Mepilex® Lite

The absorbent, conformable, thin foam dressing

Safetac® Technology



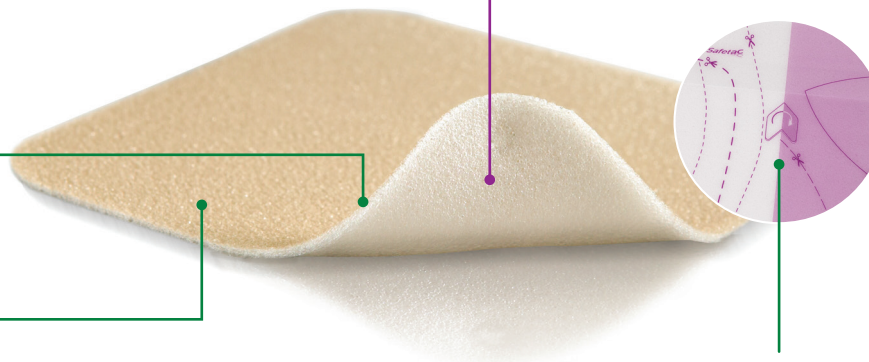
- Reduces pain and trauma during dressing change¹
- Does not adhere to the moist wound bed but to dry skin only
- Seals the wound margins and reduces risk of maceration²

Polyurethane foam pad

- Absorbs exudate
- Conformable
- May be used under compression

Polyurethane backing film

- Moisture resistant
- Bacteria and viral barrier†



Mepilex 5x5 cutting guide*

How Mepilex® Lite works

Mepilex Lite is a highly conformable dressing that absorbs exudate and maintains a moist wound environment. The Safetac technology layer seals around the wound edges, preventing the exudate from leaking onto the surrounding skin, thus minimizing the risk of maceration.² The Safetac Technology layer also allows for atraumatic dressing changes.¹ Mepilex Lite may be cut to suit various wound shapes and locations.

Benefits of Mepilex® Lite

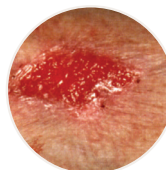
- Atraumatic to the wound and surrounding skin on removal¹
- Promotes patient comfort during wear and minimizes pain upon removal¹
- Minimizes the risk of maceration²
- Conforms well to body contours
- Thin and comfortable to wear
- Easy to handle; may be cut for customization
- Maintains a moist wound environment

Wear time

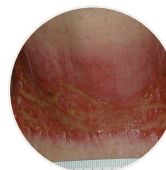
Mepilex Lite may be left in place for several days depending on the condition of the wound and surrounding skin, or as indicated by accepted clinical practice.

Indications for use

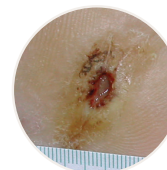
Mepilex Lite is designed for the management of a wide range of non-to-low exuding wounds, such as leg and foot ulcers, pressure ulcers, partial thickness burns, radiation skin reactions and Epidermolysis Bullosa. Mepilex Lite can also be used as protection of compromised and/or fragile skin.



Non to low exuding wound



Radiation skin reaction



Foot ulcer

Mepilex® Lite ordering information

Product Code	Size	Pcs/box	Pcs/case	HCPCS
284599	8" x 20" (20 x 50 cm)	4	24	—
284090	2.4" x 3.4" (6 x 8.5 cm)	5	70	A6209
284190	4" x 4" (10 x 10 cm)	5	50	A6209
284123*	5" x 5" (12.5 x 12.5 cm)	5	50	A6210
284390	6" x 6" (15 x 15 cm)	5	50	A6210

References: 1. White R. et al. Evidence for atraumatic soft silicone wound dressing use. Wounds UK, 2005. 2. Wiberg A.B. et al. Preventing maceration with a soft silicone dressing: in-vitro evaluations. Poster presented at the 3rd Congress of the WUWHHS, Toronto, Canada, 2008.

†Microbes larger than 25 nm.

Mepilex® Transfer

The thin and conformable exudate transfer foam dressing

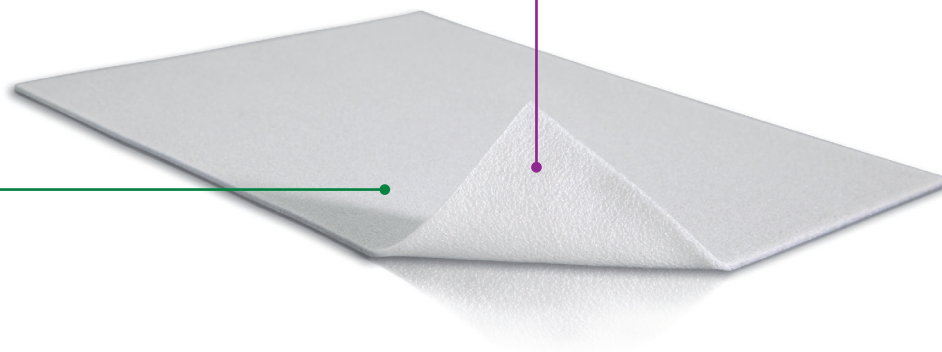
Safetac® Technology

- Reduces pain and trauma during dressing change¹
- Does not adhere to the moist wound bed but to dry skin only
- Seals the wound margins and reduces risk of maceration²

Safetac®
TECHNOLOGY

Thin polyurethane foam layer

- Transfers the exudate away from the wound
- Conforms well on difficult-to-dress wounds
- Ideal for large, exuding wounds



How Mepilex® Transfer works

Mepilex Transfer is thin and conformable for even the most difficult-to-dress wounds. The Safetac Technology layer allows for direct contact to the wound and the surrounding skin, including uneven surfaces. As the Safetac Technology layer seals around the wound, the foam structure of Mepilex Transfer allows the exudate to move vertically into a secondary absorbent pad. Mepilex® Transfer maintains a moist wound environment in combination with an appropriate secondary dressing.

Benefits of Mepilex® Transfer

- Transfers exudate away from the wound
- Atraumatic to the wound and surrounding skin on removal¹
- Conforms well to body contours
- May be cut to shape
- Minimizes the risk of maceration²
- Promotes patient comfort during wear and minimizes pain upon removal¹
- Suitable for large and/or fragile wounds

Wear time

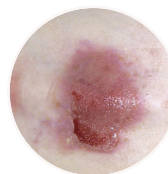
Mepilex Transfer may be left in place for several days depending on the condition of the wound and surrounding skin, or as indicated by accepted clinical practice.

Indications for use

Mepilex Transfer is designed for a wide range of exuding and difficult-to-dress wounds. Mepilex Transfer can also be used as a protective layer on non-exuding wounds and/or large areas of fragile skin. Mepilex Transfer can be used under compression.



Radiation-induced
dermatitis



Epidermolysis
Bullosa (EB)



Fungating
malignant wound

Mepilex® Transfer ordering information

Product Code	Size	Pcs/box	Pcs/case	HCPCS
294899	6" x 8" (15 x 20 cm)	5	40	A6210
294599	8" x 20" (20 x 50 cm)	4	24	A6211

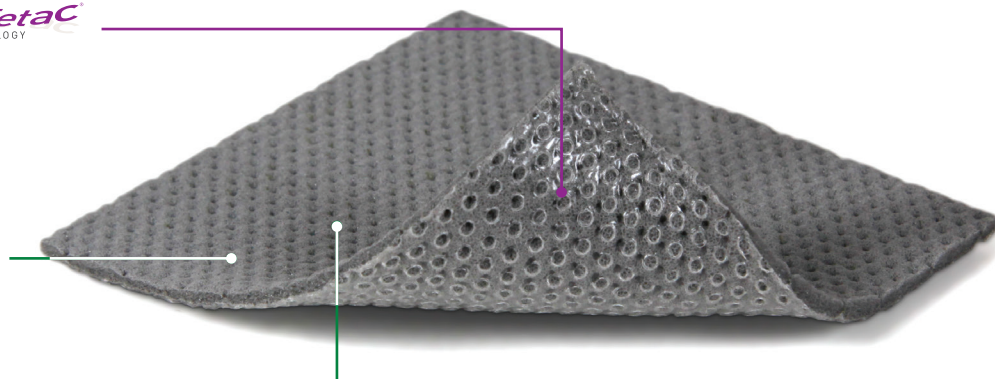
References: 1. White R. et al. Evidence for atraumatic soft silicone wound dressing use. Wounds UK, 2005. 2. Wiberg A.B. et al. Preventing maceration with a soft silicone dressing: in-vitro evaluations. Poster presented at the 3rd Congress of the WUWHS, Toronto, Canada, 2008.

The thin and conformable, antimicrobial exudate transfer dressing

Safetac® Technology



- Reduces pain and trauma during dressing change¹
- Does not adhere to the moist wound bed but to dry skin only
- Seals the wound margins and reduces risk of maceration²
- The absence of a backing film allows exudate to transfer into a secondary dressing that can be changed as needed
- The antimicrobial silver-impregnated, polyurethane foam transfers exudate into a secondary dressing



How Mepilex® Transfer Ag works

Mepilex Transfer Ag is a thin and conformable, antimicrobial wound contact layer. The Safetac Technology layer allows direct contact to the wound and the surrounding skin, including uneven surfaces. As the Safetac Technology layer seals around the wound, the foam structure of Mepilex Transfer Ag allows exudate to move vertically into a secondary absorbent dressing. Mepilex Transfer Ag maintains a moist wound environment in combination with an appropriate secondary dressing.

Mepilex Transfer Ag inactivates wound-related pathogens within 30 minutes³ with a sustained effect up to 14 days.⁴ By reducing the number of microorganisms, Mepilex Transfer Ag may also reduce odor.

Benefits of Mepilex® Transfer Ag

- Minimizes pain and trauma at dressing change^{1,2}
- Effective, sustained release of silver provides rapid, antimicrobial effect within 30 minutes³ that is sustained for up to 14 days⁴
- Promotes patient comfort during wear
- Conforms well to body contours
- May be cut to desired shapes
- Effective under compression bandages

Wear time

Mepilex Transfer Ag may be left in place for up to 14 days depending on the patient, condition of the wound and surrounding skin, or as indicated by accepted clinical practice.

Indications for use

Mepilex Transfer Ag is indicated for the management of a wide range of exuding wounds such as leg and foot ulcers, pressure ulcers, partial thickness burns, traumatic and surgical wounds. Mepilex Transfer Ag can also be used under compression bandaging.

Mepilex® Transfer Ag ordering information

Product Code	Size	Pcs/box	Pcs/case	HCPCS
394190	4" x 5" (10 x 12.5 cm)	5	50	A6210
394890	6" x 8" (15 x 20 cm)	10	50	A6210
394590	8" x 20" (20 x 50 cm)	2	12	A6211

References: 1. White R. A multinational survey of the assessment of pain when removing dressings. Wounds UK, 2008. 2. Dykes PJ et al. Effects of adhesive dressings on the stratum corneum of the skin. J Wound Care 2001; 10(2):7-10. 3. Mölnlycke® Mepilex® AG Product Data Sheet Report PD-358735-10 4. Mölnlycke® testing Report Antimicrobial effect of Mepilex® Transfer Ag and competitors against wound pathogens PD-455823. 2016

Mepitel® One

ONE SIDED
For easier application

The highly transparent wound contact layer (single-sided)

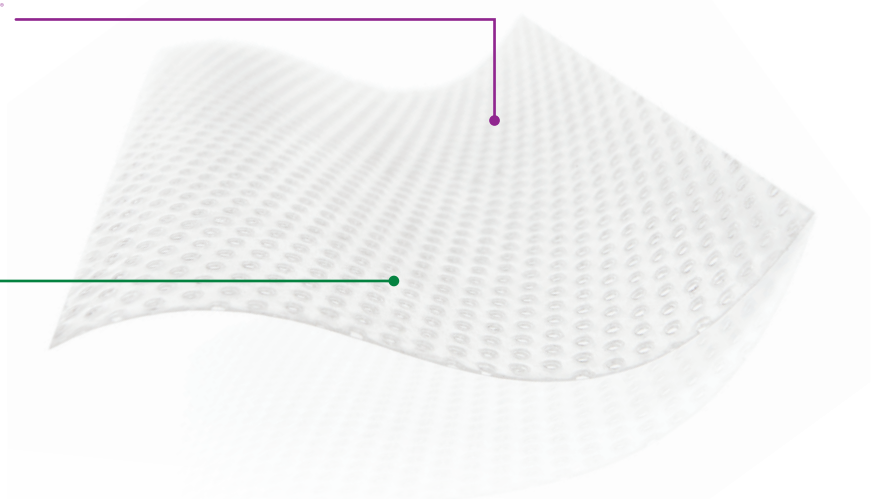
Safetac® Technology

- Reduces pain and trauma during dressing change¹
- Does not adhere to the moist wound bed but to dry skin only
- Seals the wound margins and reduces risk of maceration²

Safetac®
TECHNOLOGY

Open mesh structure

- Allows for transfer of exudate and application of topical treatment
- High transparency



How Mepitel® One works

Mepitel One may be left in place for up to 14 days, depending on the condition of the wound, which reduces the necessity for frequent primary dressing changes. The porous structure of Mepitel One allows exudate to pass into an outer absorbent dressing. The Safetac Technology layer prevents the outer dressing from sticking to the wound and allows for atraumatic dressing changes.¹ The Safetac Technology layer also seals around the wound edges, preventing the exudate from leaking onto the surrounding skin, thus minimizing the risk of maceration.²

Benefits of Mepitel® One

- Minimizes pain and trauma at dressing changes¹
- Safetac Technology layer on wound contact side only (one sided) for easy handling and application
- May remain in place for up to 14 days which allows cost effective and undisturbed wound healing
- Enables less frequent dressing changes
- Minimizes the risk of maceration²
- Leaves no residue and does not dry out
- Transparent for easy wound inspection during application and wear
- Conforms well to body contours, promoting patient comfort during wear
- Stays in place

Wear time

Mepitel One may be left in place for up to 14 days depending on the condition of the wound and surrounding skin, or as indicated by accepted clinical practice (exudate should pass freely through the dressing and the holes should not be blocked). If saturated, the secondary absorbent dressing should be changed with the Mepitel One left in place.

Indications for use

Mepitel One is a wound contact layer designed for the management of a wide range of exuding wounds such as painful wounds, skin tears, skin abrasions, surgical incisions, partial thickness burns, traumatic wounds, blistering, lacerations, partial and full thickness grafts, radiated skin, leg and foot ulcers. It can also be used as a protective layer on non-exuding wounds and on areas with fragile skin.



Burns



Skin grafts



Skin tears

Mepitel® One ordering information

Product Code	Size	Pcs/box	Pcs/case	HCPCS
289100	2" x 3" (5 x 7.5 cm)	10	70	A6206
289300	3" x 4" (7.5 x 10 cm)	10	40	A6206
289500	4" x 7" (10 x 18 cm)	10	70	A6207
289700	6.8" x 10" (17 x 25 cm)	5	40	A6208
289750	10.8" x 20" (27.5 x 50 cm)	2	14	A6208

References: 1. White R. et al. Evidence for atraumatic soft silicone wound dressing use. Wounds UK, 2005.
2. Wiberg A.B. et al. Preventing maceration with a soft silicone dressing: in-vitro evaluations. Poster presented at the 3rd Congress of the WUWHIS, Toronto, Canada, 2008.

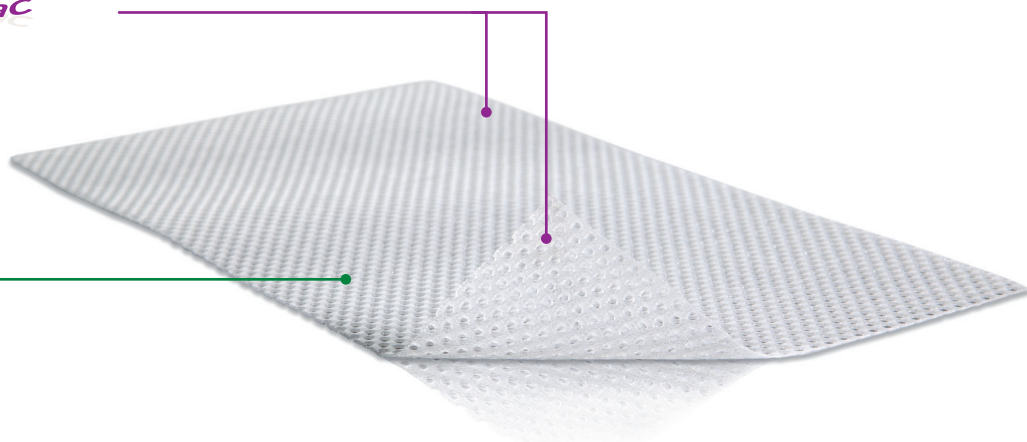
The transparent wound contact layer (double-sided)

Safetac® Technology *Safetac* TECHNOLOGY

- Reduces pain and trauma during dressing change¹
- Does not adhere to the moist wound bed but to dry skin only
- Seals the wound margins and reduces risk of maceration²

Open mesh structure

- Allows transfer of exudate and application of topical treatment
- Transparent
- Allows topical applications to pass through



How Mepitel® works

Mepitel may be left in place for up to 14 days, depending on the condition of the wound, which reduces the necessity for frequent primary dressing changes. The porous structure of Mepitel allows exudate to pass into an outer absorbent dressing. The Safetac Technology layer prevents the outer dressing from sticking to the wound and allows for atraumatic dressing changes.¹ The Safetac Technology layer also seals around the wound edges, preventing the exudate from leaking onto the surrounding skin, thus minimizing the risk of maceration.²

Benefits of Mepitel®

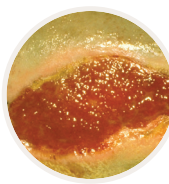
- Minimizes trauma and pain during dressing changes
- Prevents damage to newly formed delicate tissue upon removal¹
- May remain in place for up to 14 days for cost effective undisturbed wound healing
- Enables less frequent dressing changes
- Minimizes the risk of maceration²
- Does not adhere to moist wound beds but to dry tissue only
- Transparent for easy wound inspection during application and during wear
- Conforms well to body contours, promoting patient comfort during wear

Wear time

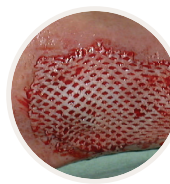
Mepitel may be left in place for up to 14 days depending on the condition of the wound and surrounding skin, or as indicated by accepted clinical practice (exudate should pass freely through the dressing and the pores should not be blocked). If saturated, the secondary absorbent dressing pad should be changed with the Mepitel left in place.

Indications for use

Mepitel is a meshed, non-adherent wound contact layer allowing passage of exudate and providing fixation and protection of tissues. Mepitel is designed for a wide range of exuding wounds such as skin tears, skin abrasions, sutured wounds, partial thickness burns, lacerations, partial and full thickness grafts, diabetic foot ulcers, venous and arterial leg ulcers. Mepitel can also be used as a protective layer on non-exuding wounds, blisters, fragile skin and exposed fragile tissues.



Primary wound protection



Skin grafts



Skin tears

Mepitel® ordering information

Product Code	Size	Pcs/box	Pcs/case	HCPCS
290599	2" x 3" (5 x 7.5 cm)	10	50	A6206
290799	3" x 4" (7.5 x 10 cm)	10	40	A6206
291099	4" x 7" (10 x 18 cm)	10	70	A6207
292005	8" x 12" (20 x 30 cm)	5	30	A6208

References: 1. White R. et al. Evidence for atraumatic soft silicone wound dressing use. Wounds UK. 2005. 2. Wiberg A.B. et al. Preventing maceration with a soft silicone dressing: in-vitro evaluations. Poster presented at the 3rd Congress of the WUWHs, Toronto, Canada, 2008.

The highly conformable, antimicrobial wound contact layer

Safetac® Technology

- Reduces pain and trauma during dressing change¹
- Does not adhere to the moist wound bed but to dry skin only
- Seals the wound margins and reduces risk of maceration²

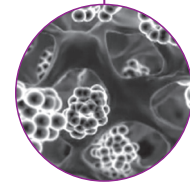
Safetac®
TECHNOLOGY

Soft and conformable

Open mesh structure

- Allows transfer of exudate

Our technologically advanced process fuses silver sulphate with Safetac Technology's unique base without losing the gentle effectiveness of Safetac Technology and the antimicrobial properties of silver.



Benefits of Mepitel® Ag

- Reduces pain and trauma at dressings changes.¹
- Prevents damage to newly formed delicate tissue upon removal¹
- Stays securely in place without slippage
- Can be left in place, while a secondary layer is changed as frequently as necessary
- Inactivates a broad range of wound-related pathogens for up to 8 days³
- Antimicrobial effect – even with a secondary layer⁴

Wear time

Mepitel Ag may be left in place for up to 8 days depending on the patient, condition of the wound and surrounding skin, or as indicated by accepted clinical practice (exudates should pass freely through the dressing and the holes should not be blocked). If saturated, the secondary absorbent dressing could be changed with the Mepitel Ag left in place.

Indications for use

Mepitel Ag is intended for the management of a wide range of exuding wounds such as skin tears, skin abrasions, sutured/surgical wounds, partial thickness burns, partial and full thickness grafts, lacerations, diabetic ulcers, venous ulcers and arterial ulcers. Silver sulphate is added to the dressing as a preservative to inhibit or reduce microbial growth on the dressing.

Mepitel® Ag ordering information

Product Code	Size	Pcs/box	Pcs/case	HCPCS
390590	2" x 3" (5 x 7.5 cm)	10	50	A6206
390790	3" x 4" (7.5 x 10 cm)	10	40	A6206
390090	4" x 5" (10 x 12 cm)	10	60	A6207
391090	4" x 7" (10 x 18 cm)	10	70	A6207
392090	8" x 12" (20 x 30 cm)	5	30	A6208
392059	8" x 20" (20 x 50 cm)	2	12	A6208

References: 1. White R. et al. Evidence for atraumatic soft silicone wound dressing use. Wounds UK, 2005. 2. Wiberg A.B. et al. Preventing maceration with a soft silicone dressing: in-vitro evaluations. Poster presented at the 3rd Congress of the WUWHS, Toronto, Canada, 2008. 3. Savas & Hamberg Antimicrobial Effect of a New Silver-Containing, Soft Silicone Wound Contact Layer against Common Wound Pathogens in-vitro, Presented at SAWC Spring 2015 4. Savas & Hamberg In-vitro Evaluation of the Antimicrobial effect of a new silver-containing wound contact layer in Combination with Secondary Dressings. Presented at SAWC Spring 2015

The antimicrobial gelling fiber dressing

Sustained antimicrobial effect

- Kills a broad range of pathogens (in vitro)³
- May reduce odor
- Maintains antimicrobial efficacy for up to 7 days (in vitro)³

High tensile strength²

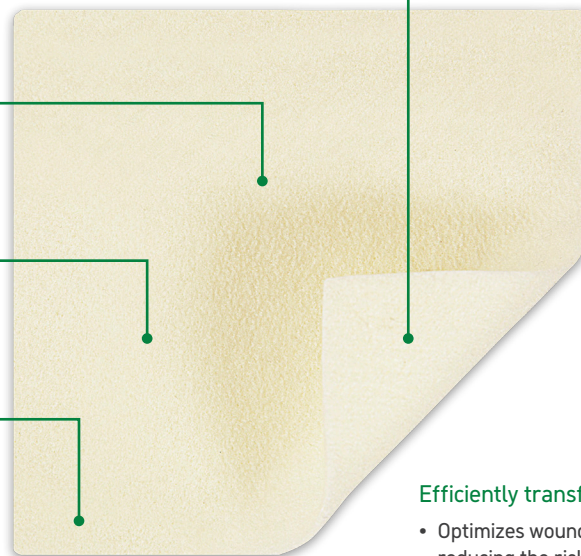
- Enables one-piece dressing removal
- Reduces the risk of residue and fibers being left in the wound

High retention capacity¹

- Absorbs and retains thick exudate and blood^{4,5}
- Reduces the risk of leakage onto surrounding skin¹
- Reduces the risk of maceration¹

Hydrolock® Technology

- Highly absorbent, even under compression⁶
- Locks in fluid, reducing risk of leakage and maceration¹
- May be left in place for up to 7 days



Efficiently transfers exudate

- Optimizes wound healing by reducing the risk of exudate pooling in the wound bed^{2,8,9}

How Exufiber® Ag+ works

In contact with wound exudate, Exufiber Ag+ transforms into a gel that facilitates moist wound healing and ease of removal during dressing change.² Exufiber Ag+ contains silver sulphate that is evenly distributed throughout the dressing. A rapid and sustained antimicrobial effect is initiated via contact with wound fluid.³

Benefits of Exufiber® Ag+

- High wet tensile strength to enable dressing removal in one piece²
- High retention capacity to reduce the risk of leakage and maceration¹
- Absorbs and retains thick exudate and blood^{4,5}
- Kills a broad range of pathogens including Vancomycin-resistant Enterococci (VRE) and MRSA (in vitro)³
- Highly absorbent, even under compression therapy⁶
- Efficiently transfers exudate
- Optimizes wound healing by reducing the risk of exudate pooling in the wound bed.^{2,8,9}
- May be left in place for up to 7 days

Wear time

Exufiber Ag+ can be left in place for up to 7 days depending on wound condition, or as indicated by clinical practice.

Indications for use

Exufiber Ag+ is intended to be used on the following medium to high exuding wounds: **Leg ulcers** (venous stasis ulcers, arterial ulcers and ulcers of mixed etiology) and **diabetic foot ulcers**; **Pressure injuries** (partial and full thickness); **Partial thickness burns** (second degree); **Donor sites** and other wounds that are prone to bleeding, such as debrided wounds (mechanically or surgically); **Traumatic wounds**; **Surgical wounds** that heal by primary intention, such as dermatological and surgical incisions (e.g. orthopaedic and vascular), and surgical wounds left to heal by secondary intention, such as dehiscent surgical incisions; **Oncology wounds** with exudate, such as fungoides-cutaneous tumours, fungating carcinoma, cutaneous metastasis, Kaposi's sarcoma and angiosarcoma. Exufiber Ag+ may be used for management of wounds as an effective barrier to bacterial penetration of the dressing, as this may help to reduce the risk of infection.

Exufiber® Ag+ ordering information

Product Code	Size	Pcs/box	Pcs/case	HCPCS
603421	2" x 2" (5 x 5 cm)	10	40	A6196
603425	4" x 4" (10 x 10 cm)	10	60	A6196
603422	4" x 4.8" (10 x 12 cm)	10	60	A6197
603423	6" x 6" (15 x 15 cm)	10	60	A6197
603424	8" x 12" (20 x 30 cm)	5	20	A6198
603420	0.8" x 17.7" (2 x 45 cm)	5	20	A6199

References: 1. Mölnlycke' Health Care Laboratory Report 2015-3549. 2. Mölnlycke' Health Care Laboratory Report PD-521248. 3. Mölnlycke' Health Care Laboratory Report PD-505602. 4. Mölnlycke' Health Care Laboratory Report PD 522700. 5. Mölnlycke' Health Care Laboratory Report PD-521245. 6. Mölnlycke' Health Care Laboratory Report PD-521232. 8. Smet, S., Beele, H., Saine, L., Suys, E., Henrickx, B. Open, non-comparative, multi-centre post market clinical follow-up investigation to evaluate performance and safety on pressure ulcers when using a gelling fibre dressing as intended. Poster Presentation at European Pressure Ulcer Advisory Panel Conference, 2015, Ghent, Belgium. 9. Davies, P., McCarty, S., An in-use product evaluation of a gelling fibre dressing in wound management. E-poster presentation at Wounds UK Conference, 2017, Harrogate, United Kingdom.AW62

The gelling fiber dressing

High tensile strength³

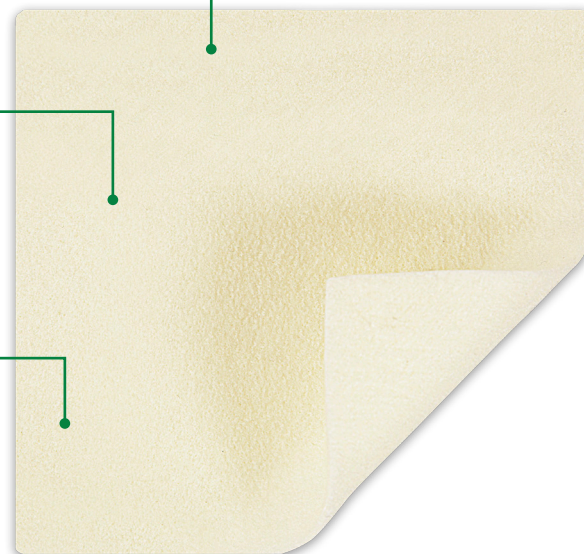
- Enables one-piece dressing removal²
- Reduces the risk of residue and fibers being left in the wound²

High retention capacity¹

- Absorbs and retains exudate, bacteria and blood^{2,4,5}
- Reduces the risk of leakage onto surrounding skin²
- Reduces the risk of maceration²

Hydrolock® Technology

- Highly absorbent, even under compression⁷
- Locks in fluid, minimizing risk of leakage and maceration¹
- May be left in place for up to 7 days



How Exufiber® works

Exufiber is a sterile, non-woven dressing made from highly absorbent polyvinyl alcohol fibers. In contact with wound exudate, Exufiber transforms into a gel that facilitates moist wound healing and ease of removal during dressing changes². Exufiber is available both as a sheet and ribbon.

Benefits of Exufiber®

- High tensile strength to enable one-piece dressing removal^{2,3}
- High retention capacity reduces the risk of leakage and maceration^{1,2}
- Absorbs and retains exudate, blood and bacteria^{2,4,5}
- Highly absorbent, even under compression therapy⁷
- Efficiently transfers exudate
- Optimizes wound healing by reducing the risk of exudate pooling in the wound bed^{2,8,9}
- May be left in place for up to 7 days

Wear time

Exufiber can be left in place for up to 7 days depending on wound condition, or as indicated by clinical practice.

Indications for use

Exufiber is intended to be used on a wide range of exuding wounds:

- Leg and foot ulcers
- Pressure ulcers
- Partial thickness burns
- Surgical wounds
- Donor sites
- Malignant wounds

Exufiber® ordering information

Product Code	Size	Pcs/box	Pcs/case	HCPCS
709900	2" x 2" (5 x 5 cm)	10	40	A6196
709901	4" x 4" (10 x 10 cm)	10	80	A61916
709902	4" x 4.8" (10 x 12 cm)	10	60	A6197
709903	6" x 6" (15 x 15 cm)	10	60	A6197
709909	0.8" x 17.7" (2 x 45 cm)	5	25	A6196

Reference: 1. Data-on-file report 20140806-001. 2. Chadwick P., McCordle J. Open, non-comparative, multi-centre post clinical study of the performance and safety of the gelling fiber wound dressing on diabetic foot injury. Journal of Wound Care 2016; 25(4): 290-300. 3. Mölnlycke Health Care Laboratory Report 20140820-003. 4. Data-on-file report 20140812-013-V1. 5. Mölnlycke Health Care Laboratory Report PD-474698. 6. Exufiber instructions for use. 7. Mölnlycke Health Care Laboratory Report 20140805-011. 8. Smet, S., Beele, H., Saine, L., Suys, E., Henrickx, B. Open, non-comparative, multi-centre post market clinical follow-up investigation to evaluate performance and safety on pressure ulcers when using a gelling fibre dressing as intended. Poster Presentation at European Pressure Ulcer Advisory Panel Conference, 2015, Ghent, Belgium. 9. Davies, P., McCarty, S., An in-use product evaluation of a gelling fibre dressing in wound management. E-poster presentation at Wounds UK Conference, 2017, Harrogate, United Kingdom. AW62

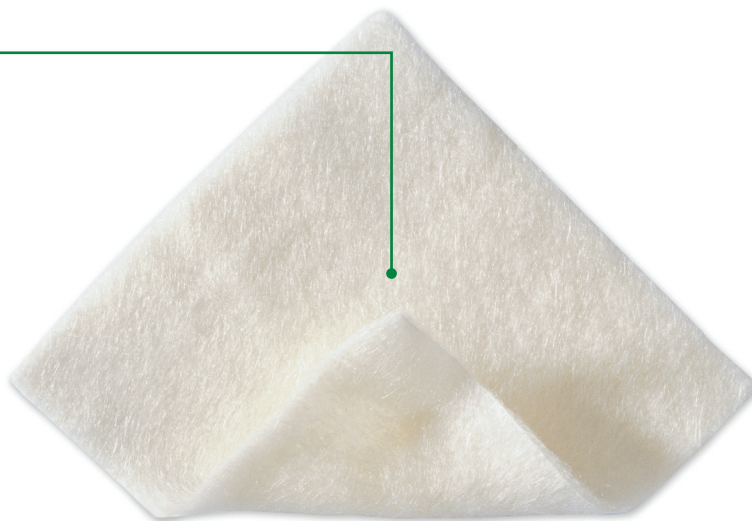
Melgisorb® Plus

The absorbent alginate dressing

Hydrophilic alginate fibers

Soft sterile dressing made of calcium sodium alginate fibers

- Excellent absorption - for high exuding wounds¹
- High wet strength - to allow removal in one piece¹
- High retention - to limit maceration¹



How Melgisorb® Plus works

Melgisorb Plus absorbs large amounts of wound exudate. When absorbing, the alginate fibers become gel-like providing a moist environment conducive to wound healing. The dressing can easily be removed by irrigating with 0.9% normal saline.

Benefits of Melgisorb® Plus

- Highly absorbent¹
- Does not adhere to the wound site when gelled
- Conformable
- Can be cut to shape

Wear time

Change Melgisorb Plus dressing when saturation is reached. Melgisorb Plus can be left in place for several days depending on wound condition or as indicated by clinical practice.

Indications for use

Sterile absorbent calcium sodium alginate dressing for moderately to heavily exuding partial to full thickness wounds such as pressure sores, venous and arterial ulcers, diabetic ulcers, donor sites, post operative wounds, dermal lesions and other external wounds inflicted by trauma. Configurations available both for flat and cavity wounds.

Melgisorb® Plus ordering information

Product Code	Size	Pcs/box	Pcs/case	HCPCS
252000	2" x 2" (5 x 5 cm)	10	100	A6196
252200	4" x 4" (10 x 10 cm)	10	100	A6196
252500	4" x 8" (10 x 20 cm)	10	100	A6197
253500	1.25" x 17.7" (3 x 45 cm)	5	50	A6199

References: 1. Report Clinical Evaluation and Summary for UMT Alginate Wound Dressings Rev 2.

The antimicrobial alginate dressing

Silver-containing alginate

- Calcium alginate
- Carboxymethylcellulose (CMC)
- Ionic silver

Alginate with CMC fibers

- Highly absorbent¹
- High wet tensile strength¹
- Absorbs and retains exudate with sustained antimicrobial efficacy²



Benefits of Melgisorb® Ag

- High fiber strength allows removal in one piece¹
- Rapid and sustained antimicrobial effect^{2,3}
- Sustained silver release up to 14 days²

Wear time

Melgisorb Ag may be left in place for up to 7 days, depending on the patient, the condition of the wound and surrounding skin, or as indicated by accepted clinical practice. Dressing change frequency will depend on wound condition and the level of exudate. Initially it may be necessary to change the dressing every 24 hours.

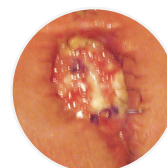
Reapply Melgisorb Ag when the secondary dressing has reached its absorbent capacity or whenever good wound care practice dictates that the dressing should be changed.

Indications for use

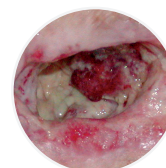
Melgisorb Ag is indicated for the management of moderate to heavily exuding partial to full thickness wounds such as: Post-operative wounds; Trauma wounds (dermal lesions, trauma injuries or incisions); Leg ulcers; Pressures ulcers; Diabetic ulcers; Graft and donor sites; Post-operative surgical wounds. This product can also be used under compression bandages. As the product contains alginate, it may assist in supporting the control of minor bleeding in superficial wounds. Melgisorb Ag is suitable for use, under medical supervision, on wounds that are critically colonized. Melgisorb Ag is indicated for external use only.



Cavity wound



Post-op surgical wound



Sacral pressure ulcer

Melgisorb® Ag ordering information

Product Code	Size	Pcs/box	Pcs/case	HPCPS
255050	2" x 2" (5 x 5 cm)	10	100	A6196
255100	4" x 4" (10 x 10 cm)	10	100	A6196
255150	6" x 6" (15 x 15 cm)	10	100	A6197
255200	8" x 12" (20 x 30 cm)	5	50	A6198
255600	1.2" x 18" (3 x 44 cm)	10	100	A6199

Normlgel® Ag

Antimicrobial silver wound gel



For wounds with dry to moderate exudate

- Provides a three-day antimicrobial barrier and the moisture donating benefits of a hydrogel¹

How Normlgel® Ag works

Normlgel Ag is an antimicrobial hydrogel that is effective in assisting the debridement and desloughing process in dry necrotic wounds, while maintaining a moist wound environment for optimal wound healing. Normlgel Ag contains an antimicrobial silver compound that is an effective barrier to bacterial penetration by inhibiting the growth of a broad spectrum of microorganisms.¹

Benefits of Normlgel® Ag

- Adds moisture and maintains a moist wound environment
- Assists debridement and desloughing in dry and/or necrotic wounds
- Antimicrobial effect against relevant wound pathogens²
- Easy to use
- Easy to apply and stay in place

Wear time

Normlgel Ag may be left in place for up to 3 days. Dressing changes and reapplication of Normlgel may be required more frequently dependent upon wound conditions and levels of exudate.

Indications for use

Normlgel Ag is indicated under the medical supervision of a healthcare professional for the management of dry to moderate exuding, partial to full thickness wounds, such as: pressure ulcers, leg ulcers, diabetic ulcers, graft and donor sites, postoperative surgical wounds and trauma wounds (dermal lesions, trauma injuries or incisions), 1st and 2nd degree burns, abrasions and lacerations.

Normlgel® Ag ordering information[†]

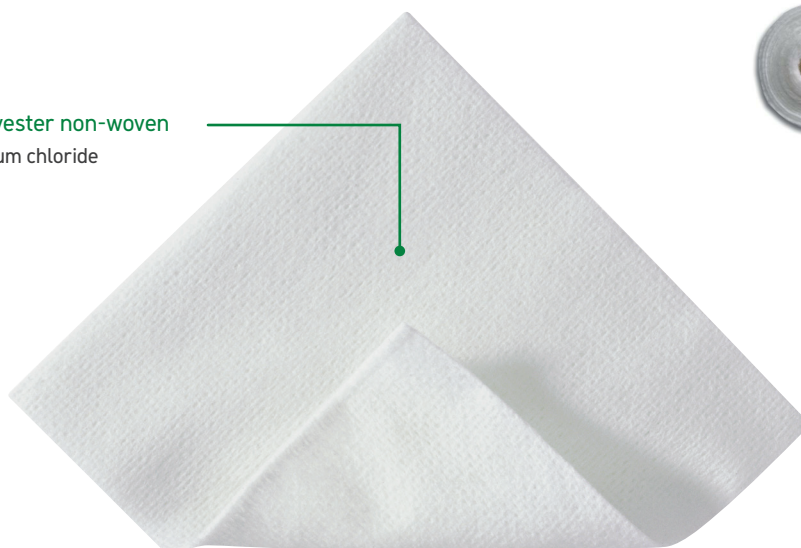
Product Code	Size	Pcs/box	Pcs/case	HCPCS
350450	1.5 oz (45gm)	10	30	A6248

[†]Normlgel Ag is unsterile and packed in tubes

The sodium chloride wound cleansing dressing

Absorbent viscose/polyester non-woven

- Impregnated with sodium chloride



How Mesalt® works

The exudate from the wound releases the sodium chloride from the dressing. Mesalt stimulates the cleansing of heavily draining and discharging wounds in the inflammatory phase by absorbing exudate, bacteria and necrotic material from the wound, thereby facilitating the natural wound healing process.

Benefits of Mesalt®

- Absorbs exudate bacteria and necrotic material (slough)
- Stimulates the cleansing of wounds
- Easy application
- Packaging not made from natural rubber latex

Wear time

Mesalt should be changed when saturated (usually once a day in heavily exuding wounds), or according to good clinical practice. If the condition of the wound deteriorates, discontinue use and consult a healthcare professional.

Indications for use

Management of moderate to heavily exuding, non-infected/infected wounds such as pressure ulcers, foot ulcers and deep wound management, e.g. cavity wounds and fistulas.

Mesalt® ordering information

Product Code	Size	Pcs/box	Pcs/case	HCPCS
285580	4" x 4" (2" x 2" folded)	30	240	A6222
285780	6" x 6" (3" x 3" folded)	30	240	A6223
286080	8" x 8" (4" x 4" folded)	30	180	A6224
285280	3/4" x 39" Ribbon	10	80	A6266

The absorbent composite dressing

Backing film

- Moisture vapor permeable and breathable
- Maintains a moist environment
- Barrier to moisture and bacteria†

Polyester non-woven

- Gives stability at application

Wound contact layer

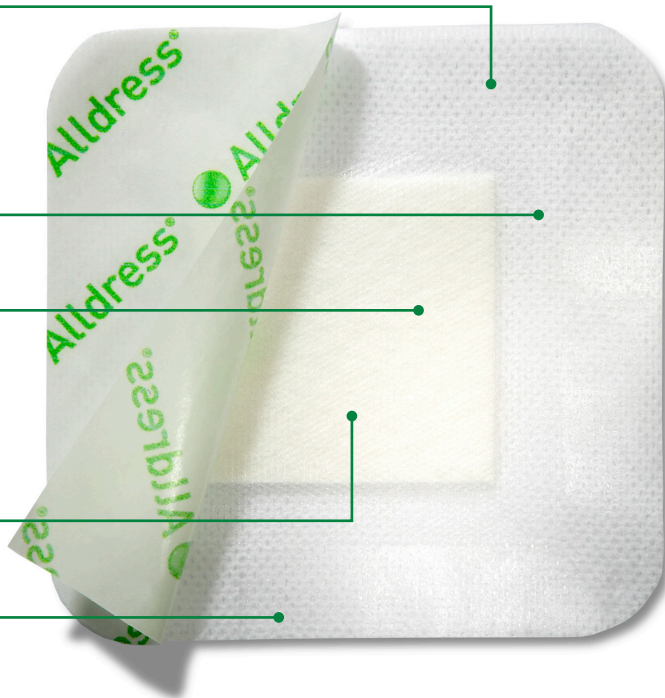
- Low adherence to wound
- Allows exudate to pass into absorbent pad
- Integrated net for absorption and retention

Absorbent pad

- Absorbs exudate

Water-based adhesive

- Secure yet gentle fixation



How Alldress® works

The net is low-adherent and protects against fibers from the absorbent pad entering the wound. The absorbent pad absorbs excess exudate and minimizes the risk of maceration to the surrounding skin, and the gentle adhesive keeps the dressing securely in place. The nonwoven layer provides stability to the dressing structure for ease of application. The semi-permeable film maintains a moist wound environment, prevents wound fluids from passing through the dressing and protects both the wound and the environment from contamination. The smooth surface reduces the friction or potential disturbance of the dressing from bed linens and clothing.

Benefits of Alldress®

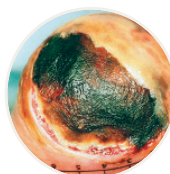
- Low adherence to the wound
- Maintains a moist environment
- Minimizes the risk of maceration
- Moisture proof and bacteria proof film backing
- Protects against contamination of bed linens
- Smooth film backing reduces friction against clothing and linens

Wear time

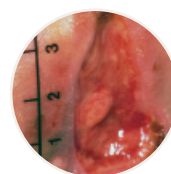
Alldress may be left in place for several days depending on the wound/skin condition, or as indicated by health care professionals.

Indications for use

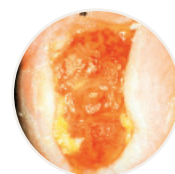
Alldress is intended to absorb, protect and maintain a moist environment in open and closed wounds. Alldress is intended for low to moderately exuding wounds.



Pressure injury



Cavity wound



Foot ulcer

Alldress® ordering information

Product Code	Size	Pcs/box	Pcs/case	HCPCS
265329	4" x 4" (10 x 10 cm)/ 2" x 2" (5 x 5 cm)	10	70	A6203
265349	6" x 6" (15 x 15 cm)/ 4" x 4" (10 x 10 cm)	10	100	A6203
265369	6" x 8" (15 x 20 cm)/ 4" x 6" (10 x 15 cm)	10	120	A6204

*Entire dressing size / Absorbent padding size

†Microbes larger than 25 nm.

Mextra® Superabsorbent

The superabsorbent dressing with a fluid-repellent backing film

Fluid-repellent backing material

- Protects against fluid strike-through

Distribution layer

- Directs exudate evenly upwards into the absorbent layer

Hydrophilic wound contact layer

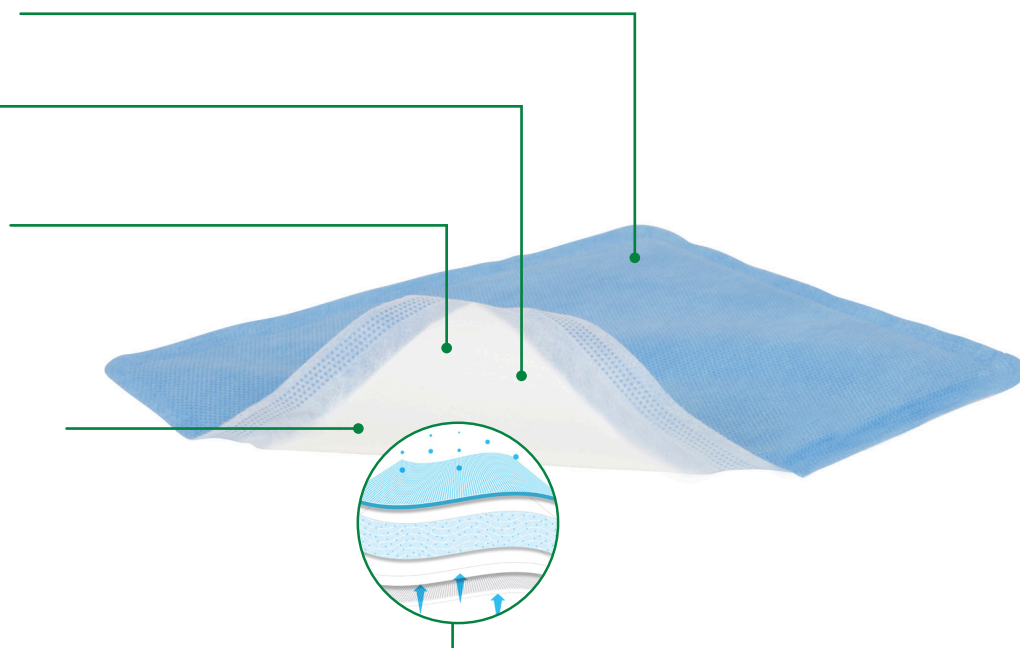
- Transmits fluid upwards into the superabsorbent layer
- Retention and absorption properties may reduce risk of maceration and protect peri-wound area

Absorbent layer with superabsorbent particles

- Transmits fluid upwards into the superabsorbent layer
- Retention and absorption properties may reduce risk of maceration and protect peri-wound area

Four layer construction

- Four Phase Absorption & Retention



Benefits of Mextra® Superabsorbent

- Helps reduce the risk of leakage and maceration through absorption and retention properties^{1,6}
- Can minimize the need for frequent dressing changes^{1,6}
- May lead to reduced treatment costs^{1,6}
- Maintains structure and integrity without becoming bulky upon exudate absorption
- Protects against fluid strike-through
- Promotes patient comfort⁷
- Has protease modulating properties³ and provides a conducive environment for healing to proceed

Frequency of change

The wound and Mextra Superabsorbent should be inspected regularly. The dressing should be changed based on the condition of the wound or before the dressing has become saturated. Mextra Superabsorbent may be left on the wound for several days.

Indications for use

Mextra Superabsorbent is intended for use on moderately to heavily exuding wounds.

Mextra® Superabsorbent ordering information

Product Code	Size	Pcs/box	Pcs/case	HPCPS
610000	5" x 5" (12.5 x 12.5 cm)	10	50	A6251
610100	5" x 7" (12.5 x 17.5 cm)	10	40	A6252
610200	5" x 9" (12.5 x 22.5 cm)	10	90	A6252
610300	7" x 9" (17.5 x 22.5 cm)	10	40	A6252
610400	9" x 11" (22.5 x 27.5 cm)	10	40	A6253
610500	9" x 13" (22.5 x 32.5 cm)	10	40	A6253

References: 1. MHC data on file report no: LIMS 20161110-004 2. Mölnlycke® Health Care Laboratory report no: PD-522474, 2016 (unpublished). 3. Mölnlycke® Health Care data on file report 20130104-004. 4. Eming, S., Smola, H., Hartmann, B., Malchau, G., Wegner, R., Krieg, T., Smola-Hess, S. The inhibition of matrix metalloproteinase activity in chronic wounds by a polyacrylate superabsorber. Biomaterials 2008; 29(19): 2932-2940 5. MHC data on file report no: PD-529849 6. Ferreras DT, Malcomb R. A 4-Layered superabsorbent dressing versus the standard ABD pad in managing moderate to high exudate venous leg injury. Poster presented at Symposium on Advanced Wound Care Fall, Las Vegas Nevada, United States of America, 2016 7. MHC Survey report no: PD-522187

Mepore® Pro

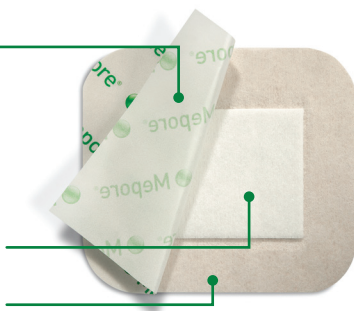
The shower-proof, self-adhesive absorbent dressing

Backing film

- Soft, elastic, non-woven polyester
- Barrier to moisture and bacteria†
- Breathable

Absorbent wound pad

Skin-friendly adhesive



How Mepore® Pro works

The backing film allows showering and protects the wound from moisture and contamination. It also protects the clinician, clothing and bed linen from blood or exudate strike-through. Due to an absorbent pad and a high vapor permeability of the backing film, Mepore Pro offers good total fluid handling. The polyacrylate adhesive is designed to be gentle to the skin and at the same time provide secure fixation. The easy-to-remove protection paper permits aseptic application and simplifies dressing application.

Benefits of Mepore® Pro

- Skin-friendly adhesive
- Low-adherent wound contact layer minimizes risk of adherence to the wound
- Easy-to-remove protection paper allows for convenient and aseptic application
- Backing film provides barrier to moisture and bacteria
- Breathable film
- Low friction to clothing and bed linens
- Large sizes ideal for post-surgical use

Indications for use

Mepore Pro is designed for use on low to moderately exuding wounds, such as surgical wounds, cuts and abrasions.

Mepore®

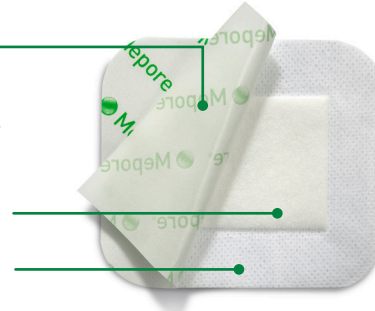
The self-adhesive absorbent dressing

Backing film

- Soft, elastic, non-woven fabric backing with high breathability

Absorbent wound pad

Skin-friendly adhesive



How Mepore® works

The porous structure of the non-woven backing fabric ensures air and water vapor permeability, and it provides a barrier for blood and fluid strike-through. Mepore is flexible, conforms well to body contours and allows body movements when in place. The polyacrylate adhesive has been designed to be gentle to the skin but at the same time provide secure fixation. The low-adherent wound contact layer reduces the risk of adherence to the wound.

Benefits of Mepore®

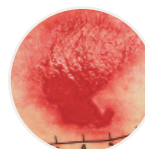
- Skin-friendly adhesive
- Low-adherent wound contact layer minimizes risk of adherence to the wound
- Easy-to-remove protection paper allows for convenient and aseptic application
- Flexible fluid repellent backing

Indications for use

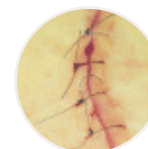
Mepore is a self-adhesive, sterile, absorbent dressing intended for treating low to moderately exuding wounds, such as surgical wounds, cuts and abrasions.

Wear time

The frequency of dressing changes should be governed by the condition of the wound in accordance with accepted clinical practice.



Fragile epithelializing wound



Surgical wound

Mepore® Pro ordering information†

Product Code	Size	Pcs/box	Pcs/case	HCPCS
670990	3.6" x 4" (9 x 10 cm)	40	320	A6203
671090	3.6" x 6" (9 x 15 cm)	40	320	A6203
671190	3.6" x 8" (9 x 20 cm)	30	180	A6203
671290	3.6" x 10" (9 x 25 cm)	30	180	A6203
671390	3.6" x 12" (9 x 30 cm)	30	270	A6203

Mepore® ordering information

Product Code	Size	Pcs/box	Pcs/case	HCPCS
670800	2.5" x 3" (6 x 7 cm)	60	480	—
670900	3.6" x 4" (9 x 10 cm)	50	400	—
671000	3.6" x 6" (9 x 15 cm)	50	400	—
671299	3.6" x 10" (9 x 25 cm)	30	210	—
671300	3.6" x 12" (9 x 30 cm)	30	270	—
671400	3.6" x 14" (9 x 35 cm)	30	180	—

†Microbes larger than 25 nm.

Mepore® Film

The self-adhesive, breathable, transparent film dressing

Framed delivery system

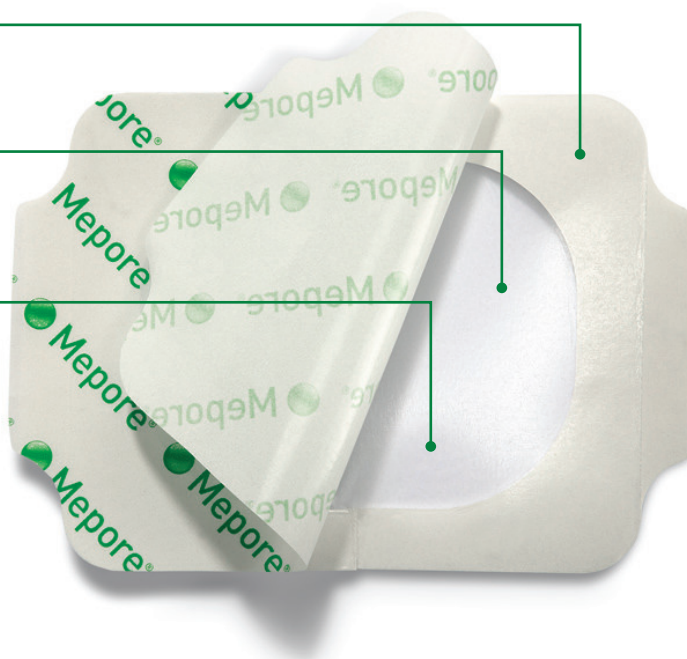
- Easy application

Polyacrylic adhesive

- Skin-friendly adhesive
- Secure fixation

Polyurethane film

- Breathable and elastic
- Transparent
- Barrier to moisture and bacteria¹



How Mepore® Film works

Mepore Film maintains a moist environment in the wound and due to its high vapor permeability, allows excess moisture to pass away from the wound and surrounding skin.

Benefits of Mepore® Film

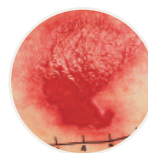
- High breathability
- Easy application
- Conforms easily to body contours
- Skin-friendly adhesive
- Maintains a moist environment
- Protects wound surface
- Barrier to moisture and bacteria¹
- Protects skin from friction injuries
- Secure fixation

Wear time

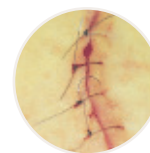
The dressing may be left in place for several days depending on the wound/skin condition, or as indicated by good clinical practice.

Indications for use

Mepore Film is intended for protection of intact skin and superficial wounds. Mepore Film can also be used for fixation of medical devices such as wound dressings, tubes and cannulas.



Fragile epithelializing wound



Surgical wound

Mepore® Film ordering information

Product Code	Size	Pcs/box	Pcs/case	HCPCS
270600	2.4" x 2.6" (6 x 7 cm)	100	600	A6257
271500	4" x 5" (10 x 12.7 cm)	70	210	A6258
272500	4" x 10" (10 x 25 cm)	20	100	A6258
273000	6" x 8.5" (15 x 21.5 cm)	10	50	A6258

Mepiform®

The self-adherent, silicone gel sheeting for scar management

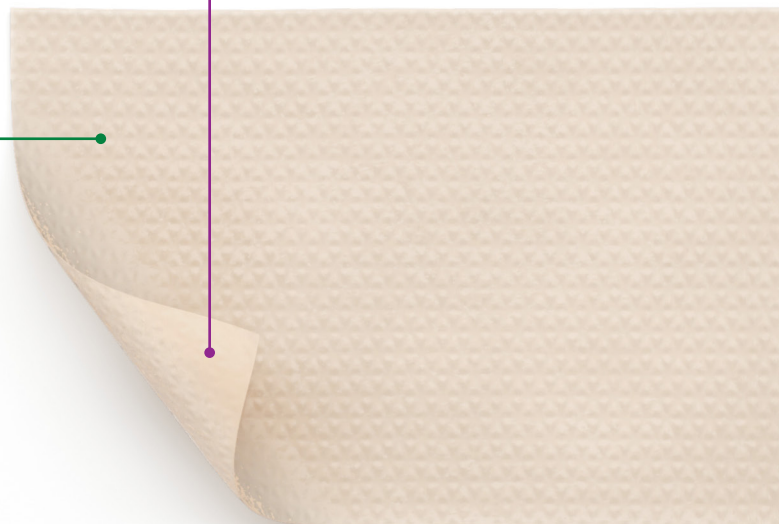
Safetac® Technology

- Atraumatic to skin on removal¹
- Adheres gently yet securely to skin

Safetac®
TECHNOLOGY

Non-woven backing film

- Breathable
- Moisture proof



How Mepiform® works

Topical silicone empirically has been shown to have a positive impact on hypertrophic and keloid scars.² Mepiform should optimally be worn 24 hours a day. It is recommended that Mepiform is removed once a day (e.g., when showering or bathing) for inspection and washing of the skin. For prophylactic treatment, Mepiform should be used for 2–6 months depending on the condition of the scar.

Benefits of Mepiform®

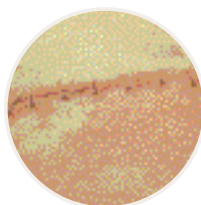
- Conforms well to body contours
- No extra fixation is needed
- May be cut to size
- Thin, flexible and discreet
- May be worn in daily activities
- May be re-applied
- May be used for several days

Wear time

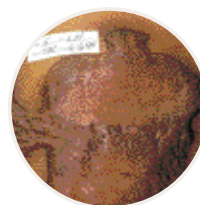
Mepiform should optimally be worn for 24 hours a day. Remove the dressing once per day for inspection and washing of the skin. The dressing can then be reapplied. Mepiform should under normal conditions be changed every 3–7 days or when the adherent properties of the dressing are no longer sufficient.

Indications for use

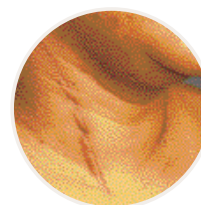
Mepiform is designed for the management of both old and new hypertrophic and keloid scars. It can also be used as a prophylactic therapy on closed wounds for prevention of hypertrophic or keloid scarring.



Closed surgical
wounds



Keloids



Hypertrophic
scars

Mepiform® ordering information

Product Code	Size	Pcs/box	Pcs/case
293199	1.6" x 12" (4 x 30 cm)	5	50
293299	2" x 3" (5 x 7.5 cm)	5	25
293499	4" x 7" (10 x 18 cm)	5	35

References: 1. White R et al. Evidence for atraumatic soft silicone wound dressing use. Wounds UK, 2005. 2. Carney S.A, Cason C.G, Gowar J.P. "Cira-Care gel sheeting in the management of hypertrophic scarring." The British Library 1994.

Mepitac®

The self-adherent, conformable fixation tape

Safetac® Technology

- Reduces pain and trauma upon removal¹

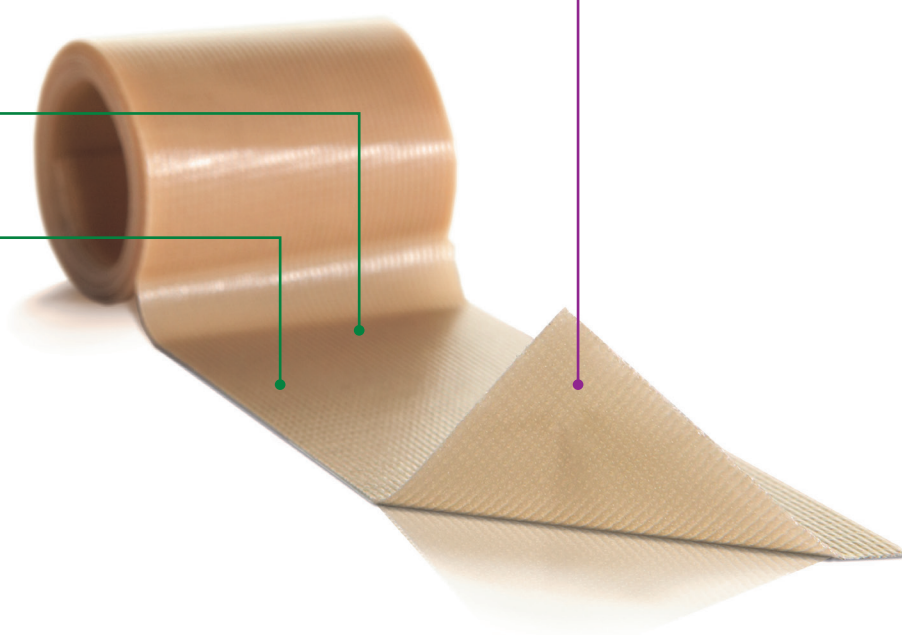
Safetac®
TECHNOLOGY

Polyurethane backing film

- Breathable
- Moisture proof

Knitted fabric

- Conformable
- Easy to cut



How Mepitac® works

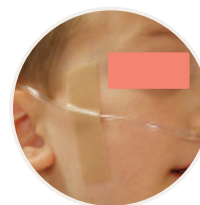
Mepitac is highly conformable and easy to apply and remove. The Safetac® Technology layer allows secure fixation and atraumatic removal from skin and hair.¹ If inspection or repositioning is necessary, Mepitac can be lifted and re-applied. It is an ideal fixation solution for patients with fragile and sensitive skin or with allergies to traditional adhesives. Mepitac is suitable for patients requiring repeated application and removal of tape over the same area (e.g., neonates and dialysis patients).

Benefits of Mepitac®

- Atraumatic to the skin on removal¹
- Conforms well to body contours
- Leaves no residue
- Moisture proof film backing
- Breathable
- May be repositioned

Indications for use

Mepitac is intended for fixation of medical devices such as drains, tubes, probes, electrodes, IV cannula and dressings. Mepitac offers gentle skin protection when used under devices such as tubes.



Mepitac® ordering information†

Product Code	Size	Rolls/box	HCPCS
298300	3/4" x 118" (2 x 300 cm)	12	A4452
298400	1.5" x 59" (4 x 150 cm)	12	A4452

References: 1. White R. et al. Evidence for atraumatic soft silicone wound dressing use. Wounds UK, 2005.

The self-adhesive fabric tape

Non-woven, Polyester Fabric Backing

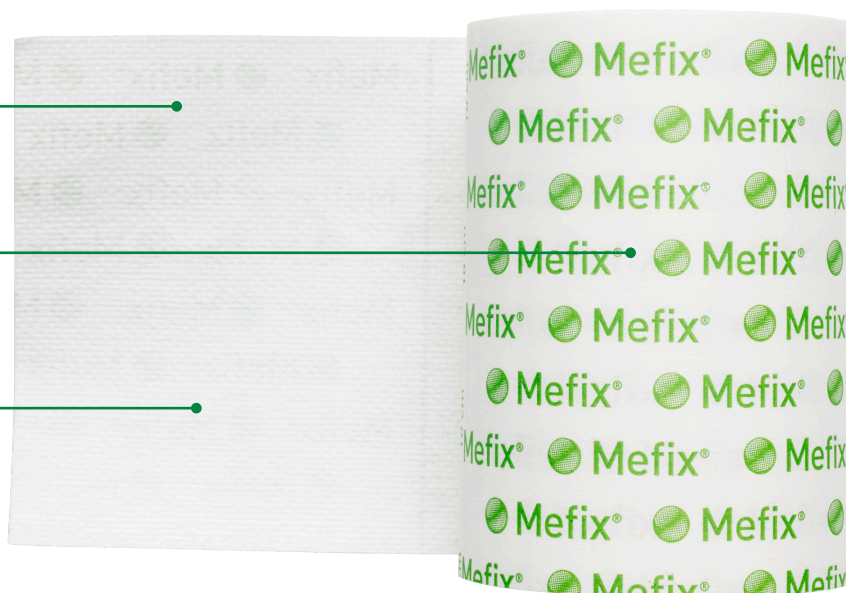
- Soft and elastic
- Non-absorbent

Protection Paper

- Easy-to-remove
- Premeasured
- Perforated split

Polyacrylate Adhesive

- Skin-friendly
- Water based
- Solvent free



How Mefix® works

The porous structure of the nonwoven fabric ensures air and water vapor permeability. Mefix is stretchable, conforms well to body contours and allows body movements when in place. The fabric is non-absorbent and provides a barrier to blood and fluid. The polyacrylate adhesive has been designed to be gentle to the skin but at the same time provide secure fixation.

The easy-to-remove protection paper is pre-measured in 4-inch intervals and has a perforated split for easy removal and application. Mefix may be easily cut to the desired shape and size.

Benefits of Mefix®

- Skin-friendly adhesive
- Provides secure fixation
- Stretchable, conformable fabric backing provides barrier to blood and fluid
- Pre-measured release paper allows for convenient measurement/cutting
- May be applied over flexing areas such as neck, elbows, knees
- Air permeable
- Easy-to-remove backing paper with perforated split

Indications for use

Mefix is a self-adhesive fabric for fixation of dressings, tubes and cannulas.

Mefix® ordering information

Product Code	Size	Pcs/box	Pcs/case	HPCPS
310299†	1" x 11 yds (2.5 cm x 10 m)	1	40	A4450
310599	2" x 11 yds (5 cm x 10 m)	1	40	A4450
311099	4" x 11 yds (10 cm x 10 m)	1	20	A4450
311599	6" x 11 yds (15 cm x 10 m)	1	15	A4450
312000	8" x 11 yds (20 cm x 10 m)	1	10	A4450

†Packaged in boxes containing individual, non-sterile rolls.

‡This size does not have a perforated split in the protection paper



How Setopress® works

Setopress is a lightweight, high compression bandage. To ensure correct application, a simple visual guide is permanently printed on the bandage. The visual guide consists of colored rectangles which become squares when the correct extension is reached. Extending the **BROWN** rectangles to squares provides 40mmHg at the ankle. Extending the **GREEN** rectangles to squares provides 30mmHg at the ankle.

If a patient is not accustomed to compression therapy or finds it difficult to comply, moderate compression may be used initially. When applied correctly, Setopress high compression bandages produce a level of compression that has been shown to heal even long-standing leg injuries within 12 weeks.¹ The visual application guide makes it easy to apply Setopress consistently and correctly.

Benefits of Setopress®

- Provides effective high compression²
- Allows for 2 different levels of compression
- Easy-to-use application technique
- Long enough for even the largest limbs
- Thin enough to be worn with shoes to encourage mobility
- Washable for repeated use

Indications for use

Bandage for the treatment of venous leg ulcers

Material properties

- Polyamide
- Elastane
- Cotton
- Not made with natural rubber latex

Setopress® ordering information†

Product Code	Size	Pcs/box	Pcs/case	HCPCS
3505	4" x 138" (10 cm x 3.5 m)	1	12	A6452

†Individually packed in cartons of 12

PRECAUTIONS:

- DO NOT apply Setopress® if arterial insufficiency is present or suspected
- DO NOT use the figure-of-eight bandaging technique
- DO NOT use on limbs with a circumference of less than 7" (18 cm)

References: 1. Blair et al, Sustained Compression and Healing of Chronic Veno Injury. BMJ 1988 297; 1159-64 2. Gould DJ, Cambell S, Newton H, et al, Setopress® vs. Elastocrepe in Chronic Venous Ulceration. British Journal of Nursing 1998, 7(2): 66-70, 72-73

Tubifast® 2-Way Stretch™

The lightweight, tubular retention dressing

Tubular bandage

- Does not require pins or tape

Quick and easy to use

- Cut to size and stretch over the dressing for even, non-constricting fit

Roll design

- Ensures cost-effective use by minimizing waste

Quick and easy to apply

Tubifast 2-Way Stretch™

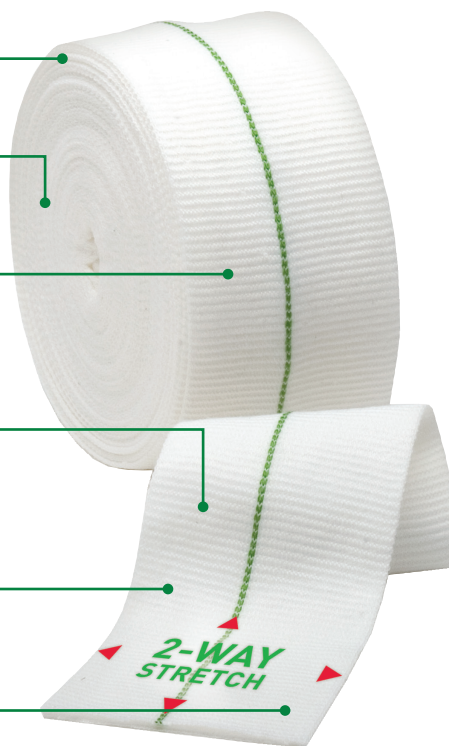
- Available in 5 color-coded widths
- Designed to fit snugly over all limbs, no matter what the shape or size

Radial and longitudinal elasticity

- Allows patients complete freedom of movement, with added comfort¹

Decreased fraying

- So there is less risk of fibers in the wound²



How Tubifast® works

Tubifast 2-Way Stretch is manufactured from viscose with very fine elastane threads knitted into the fabric radially and longitudinally to provide light elasticity. The Tubifast bandage holds dressings securely, without constriction or compression. Each size is identified by a colored line knitted into the bandage. It's quick and easy to use: cut to size and stretch over the dressing for an even, non-constricting fit.

Benefits of Tubifast®

- Tubifast bandages hold dressings securely, without constriction or compression
- Can minimize the need for frequent dressing changes^{1,6}
- May lead to reduced treatment costs^{1,6}
- Maintains structure and integrity without becoming bulky upon exudate absorption

Indications for use

Dressing retention, patch wrapping, skin covering and as an undercast stockinette

Material properties

- Viscose, Elastane and Polyamide
- Not made with natural rubber latex

Tubifast® 2-Way Stretch™ ordering information

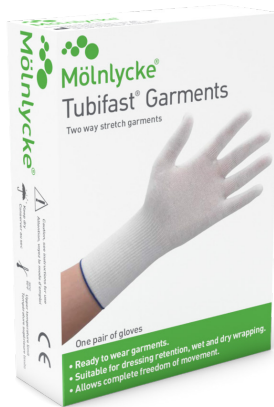
Product Code	Line	Product	Limb size	Bandage Width
2434	RED	Small limbs	3.5" - 7.1" (9 - 18 cm)	1.5" (3.5 cm)
2436	GREEN	Small and medium limbs	5.5" - 9.5" (14 - 24 cm)	2" (5 cm)
2438	BLUE	Large limbs	9.5" - 15.8" (24 - 40 cm)	3" (7.5 cm)
2440	YELLOW	Extra-large limbs, heads, children's trunks	13.8" - 25.2" (35 - 64 cm)	4.5" (10.75 cm)
2444	PURPLE	Large adult trunks	25.2" - 51.2" (64 -130 cm)	8" (20 cm)

* Length for all Tubifast® 2-way stretch is 10 m.

References: 1. Published data shows that Tubifast® 2-Way Stretch exceeds the minimum requirement of longitudinal stretch for the actions of sitting, bending and flexing. Physical testing of textiles, B. P. Saville, Woodhead Publishing, 1999. 2. Data on file.

Tubifast® Garments

Ready-to-wear garments



How Tubifast® Garments works

Ready-made Tubifast Garments are designed for dressing retention and wet or dry wrapping. They are available in full sleeved vests, tights, leggings, socks and gloves for children six months and older. Gloves also comes in adult sizes.

Tubifast Garments do not require tapes, pins or ties and are quick and easy to apply. The two-way stretch construction ensures complete freedom of movement, and the flat seams help prevent irritation to sensitive skin. Tubifast Garments are comfortable to wear at night and under ordinary clothes, promoting active days and restful nights. They are also washable for continued use.

Benefits of Tubifast® Garments

- Flat seams help prevent irritation to sensitive skin
- Convenient, quick and simple application
- Comfortable to wear under regular clothes or at night
- Allow for freedom of movement
- Available in full-sleeved vests, tights, leggings, socks and gloves
- Smaller sizes incorporate fun characters

Indications for use

Dressing retention, patch wrapping, skin covering and as an undercast stockinette

Material properties

- Viscose, Elastane and Polyamide
- Not made with natural rubber latex

Tubifast® Garments ordering information

Product Code	Description	Age/Size
992007	Vest	6-24 months
992008	Vest	2-5 years
992009	Vest	5-8 years
992010	Vest	8-11 years
992011	Vest	11-14 years
992012	Tights	6-24 months
992013	Leggings	2-5 years
992014	Leggings	5-8 years
992015	Leggings	8-11 years
992016	Leggings	11-14 years
992017	Socks	One size fits all 2-14 yrs
5922	Gloves	Extra Small Child
5923	Gloves	Small Child
5921	Gloves	Med/Lg Child - Sm/Med Adult
5920	Gloves	Medium/Large Adult

Recommended Fitting Sizes:

	Vests, Tights			Vests, Leggings	
	6-24 months	2 - 5 years	5 - 8 years	8 - 11 years	11 - 14 years
Height	74 - 86 cm	86-110 cm	110 - 128 cm	128 - 146 cm	146 - 164 cm
Inside Leg	28 - 34 cm	34 - 47 cm	47 - 58 cm	58 - 68 cm	68 - 77 cm
Arm Length	25 - 29.5 cm	29.5 - 35.5 cm	35.5 - 42 cm	42 - 49 cm	49 - 57.5 cm
Socks - One size fits all 2 - 14 years					

The multi-purpose, elasticated, tubular support bandage



How Tubigrip® works

Tubigrip is a multi-purpose, tubular support bandage that provides firm support in the management of sprains, strains and swelling. Product application is easy to use as it can be easily applied and reapplied.

Tubigrip's elasticated tubular construction stays securely in position without pins or tapes. Tubigrip can easily be reapplied after washing, without loss of effect. Tubigrip 10m helps reduce waste, as only the exact amount required is cut from the roll. Tubigrip 10m is available in two shades – natural and beige.

Benefits of Tubigrip®

- Provides firm support
- Easy to apply and reapply
- Full range of sizes to suit most applications
- No pins or tapes needed
- Washable and reusable
- Choice of two colors (10m only)

Indications for use

Treatment of strains, sprains, soft tissue injuries, joint effusions, general oedema, post burn scarring, rib cage injuries, pressure dressings and arm fixation.

Material properties

- Cotton
- Elastodiene
- Polyester

Tubigrip® ordering information

Shade	Size	Product Code			HCPCS
		Natural		Beige	
		3.28' (1m)	32.81' (10m)	32.81' (10m)	
A	Infant feet and arms	-	1435	-	A6457
B	Small hands and arms	1520	1436	1449	A6457
C	Medium arms, small ankles	1521	1443	1450	A6457
D	Large arms, medium ankles, small knees	1522	1437	1451	A6457
E	Large ankles, medium knees, small thighs	1528	1434	1448	A6457
F	Large knees, medium thighs	1523	1438	1452	A6457
G	Large thighs	-	1439	1453	A6457
J	Small trunks	-	1440	-	A6457
K	Small/Medium trunks	-	1441	-	A6457
L	Large trunks	-	1442	-	A6457

Tubigrip® sizes

Size	Min. limb circumference (inch)	Max. limb circumference (inch)	Min. limb circumference (cm)	Max. limb circumference (cm)	Sub-bandage pressure (mmHg)
A	3.9	5.7	10	14.5	20 - 30
B	5.7	11.4	14.5	29	10 - 20
C	8.7	13.8	22	35	
D	10.2	15.7	26	40	
E	11.4	18.1	29	46	
F	13.8	20.9	35	53	
G	15.7	24.4	40	62	5 - 15
J	21.3	32.3	54	82	
K	27.6	44.5	70	113	
L	41.7	58.7	106	149	

†Tubigrip Tape Measuring Guide available upon request.

Dermafit®

The multi-purpose, elasticated, tubular bandage not made with rubber latex



How Dermafit® works

Dermafit is a multi-purpose, tubular support bandage that provides support in the management of sprains, strains and swelling. Product application is quick and easy to use as it can be easily applied and reapplied.

Dermafit stays securely in position without pins or tapes, unlike conventional bandages. Dermafit can easily be reapplied after washing, without loss of effect.

Benefits of Dermafit®

- Easy to apply and reapply
- Full range of sizes to suit most applications
- No pins or tapes needed
- Cold-water washable and reusable
- 10m roll reduces waste
- Not made with natural rubber latex

Indications for use

Effective management of strains, sprains, soft tissue injuries

Material properties

- Cotton
- Elastic

Dermafit® ordering information

Size	Description	Product Code for 10m roll (32.81')	Bandage Size
A	Infant feet and arms	131935	1.75"(4.4 cm)
B	Small hands and limbs	131936	2.00"(5.1 cm)
C	Adult hands and limbs	131943	2.75"(7 cm)
D	Large arms and legs	131937	3.25"(8.3 cm)
E	Legs and small thighs	131934	3.75"(9.5 cm)
F	Large knees and thighs	131938	4.25"(10.8 cm)
G	Large thighs	131939	5.50"(14 cm)
J	Small trunks	131940	7.00"(17.8 cm)
K	Medium trunks	131941	8.50"(21.6 cm)
L	Large trunks	131942	12.50"(31.8 cm)

Avance® Solo

A portable, single patient use, negative pressure system

Pump

- Regulates pressure to deliver a continuous -125 mmHg negative pressure for 14 days²
- Visual and audible alarms for leakage, blockage and low battery, allowing the caregiver to promptly address issues^{2,3}

50ml Canister

- Aims to reduce the potential for the dressing to become fully saturated⁵
- Excess fluid is transferred to the canister⁵
- Canister may be replaced by clinician, lay caregiver or the patient themselves^{6,7}

Controlled Fluid Management Technology™

- Controlled air inlet ensures consistent, regulated negative pressure is delivered to the wound bed^{5,8}

Fixation strips

Advanced Border Dressing

- Absorptive, multi-layer dressing that conforms to the body contours at difficult-to-dress areas, e.g. knees⁹

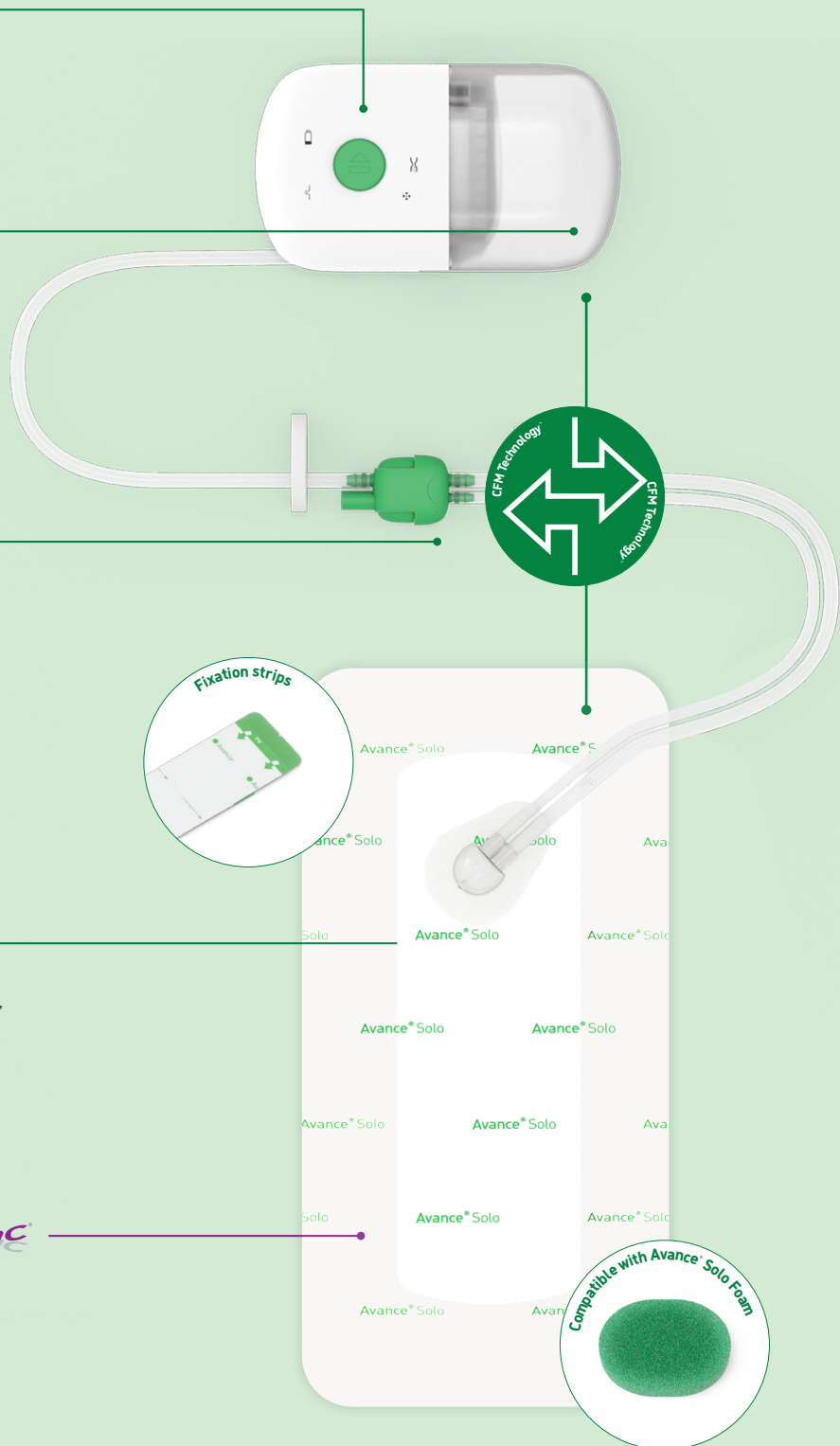
Safetac® Technology layer

- Proven to minimize pain and trauma to the wound site and surrounding skin upon removal¹¹⁻¹⁶

Safetac®
TECHNOLOGY

Compatible with Avance® Solo Foam

A single use polyurethane foam wound filler for cavity wounds



How Avance Solo works

Negative Pressure Wound Therapy (NPWT) is a method of managing wounds using suction. The dressing is airtight and the pump applies negative pressure, clearing the wound of exudate and fluids. Controlled Fluid Management (CFM) technology[®] enables the Avance Solo NPWT System to deliver consistent, regulated negative pressure to the wound site while transporting exudate from the wound to the dressing and canister.^{1,5,8}

Benefits of Avance Solo

- Delivers continuous negative pressure of -125mmHg
- Waterproof backing film on the bordered dressing provides a barrier to bacterial and viral contamination^{9,10}
- Dressing absorbs exudate even if negative pressure is lost, and retains fluid within the dressing⁹

Indications for use^{*}

Avance Solo NPWT System is indicated for removal of low to moderate amounts of exudates from chronic, acute, traumatic, subacute and dehiscent wounds, ulcers (such as diabetic, venous or pressure), surgically closed incisions, flaps and grafts. Avance Solo NPWT System is intended for use by healthcare professionals for therapy on patients in healthcare facilities and home care settings.

^{*}Full Indications for Use can be found inside product packaging.

Areas of Use

ciNPT – Closed surgical incisions

Negative pressure wound therapy (NPWT) is used to remove exudate from closed incision wounds after orthopedic (primary and revision arthroplasties), cardiothoracic (CABG and sternotomy), obgyn (c-section and abdominal hysterectomy), general/colorectal (laparotomy and ventral hernia repair), vascular (groin incisions) and plastic surgeries (abdominal wall reconstruction and mastectomy).

dNPWT – Acute & chronic open wounds

Negative Pressure Wound Therapy for open wounds (dNPWT) can be used to remove low to moderate amounts of exudate from subacute wounds and chronic wounds.



ciNPT
Closed surgical
incisions



dNPWT
Incision Dehiscent

Avance[®] Solo order information

Product Code	ciNPT	Pcs/box	Pcs/case	HCPCS
8881020	Avance Solo set (10 cm x 20 cm)	1	2	A9272
8881030	Avance Solo set (10 cm x 30 cm)	1	2	A9272
8881035	Avance Solo set (10 cm x 35 cm)	1	2	A9272
881020	10 cm x 20 cm dressing	2	4	-
881030	10 cm x 30 cm dressing	2	4	-
881035	10 cm x 35 cm dressing	2	4	-

Product Code	dNPWT	Pcs/box	Pcs/case	HCPCS
8880050	Pump and canister set	1	2	A9270
880050	Avance Solo Canister	4	8	-
881515	15 cm x 15 cm dressing	2	4	-
881520	15 cm x 20 cm dressing	2	4	-
881530	15 cm x 30 cm dressing	2	4	-
882020	20 cm x 20 cm dressing	2	4	-
882525	25 cm x 25 cm dressing	2	4	-
882000	Avance Solo Foam	4	8	A9270

References: 1. Data on file. 2. Data on file. 3. Data on file. 4. Data on file. 5. Data on file. 6. Data on file. 7. Data on file. 8. Data on file. 9. Data on file. 10. Data on file. 11. Van Overschelde, P. et al. A randomised controlled trial comparing two wound dressings used after elective hip and knee arthroplasty. Poster presentation at 5th Congress of the WUWH, Florence, Italy, 2016. 12. Silverstein P. et al. An open, parallel, randomized, comparative, multicenter study to evaluate the cost-effectiveness, performance, tolerance, and safety of a silver-containing soft silicone foam. Journal of Burn Care and Research, 2011. 13. Gee Kee E.L. et al. Randomized controlled trial of three burns dressings for partial thickness burns in children. Burns, 2014. 14. David F. et al. A randomised, controlled, non-inferiority trial comparing the performance of a soft silicone-coated wound contact layer (Mepitel One) with a lipidocolloid wound contact layer (UrgoTul) in the treatment of acute wounds. International Wound Journal, 2017. 15. Patton M.L. et al. An open, prospective, randomized pilot investigation evaluating pain with the use of a soft silicone wound contact layer vs. a silver-impregnated dressing in the treatment of acute wounds. Journal of burn care & research, 2013. 16. Bredow J. et al. Randomised clinical trial to evaluate performance of flexible self-adherent absorbent dressing coated with silicone layer after hip, knee or spinal surgery in comparison to standard wound dressing. Poster presentation at WUWH Congress, Italy, 2016. 17. Gefen A et al. The potential of a canister-based single-use negative pressure wound therapy system delivering a greater and continuous absolute pressure level to facilitate better surgical wound care. International Wound Journal, Jan 2022. 18. Malmström M et al. Wound Edge Microvascular Blood Flow during Negative-Pressure Wound Therapy: Examining the Effects of Pressures from -10 to -145mmHg. Plastic and Reconstructive Surgery • February 2010 Volume 125, Number 2 • Negative-Pressure Wound Therapy. 19. 4. Stephen R Young, Sylvie Hampton & Robin Martin. Non-invasive assessment of negative pressure wound therapy using high frequency diagnostic ultrasound: oedema reduction and new tissue accumulation. International Wound Journal ISSN 1742-4801 doi: 10.1111/j.1742-481X.2012.00994. 20. Glaser DA, Farnsworth CL, Varley ES et al. Negative pressure therapy for closed spine incisions: A pilot study. Wounds 2012 November 1;24(11). 21. Matthias Nordmeyer, Johannes Pauser, Roland Biber, Jonathan Jantsch, Siegfried Lehr, Carsten Kopschina, Christian Rapke, Hermann J. Bail, Raimund Forst, Matthias H. Brem. Negative pressure wound therapy for seroma prevention and surgical incision treatment in spinal fracture care. International Wound Journal ISSN 1742-4801 2015. 22. Milena Pachowsky & Johannes Gusingde & Andrea Klein & Siegfried Lehr & Stefan Schulz-Drost & Philipp Schlechtweg & Johannes Pauser & Kolja Gelse & Matthias H. Brem. Negative pressure wound therapy to prevent seromas and treat surgical incisions after total hip arthroplasty. International Orthopaedics (SICOT) (2012) 36:719–722. 23. Sebastian P. Plegier, Nadine Nink, Meshal Elzien, Alexander Kunold, Ahmed Koshty & Andreas Böning. Reduction of groin wound complications in vascular surgery patients using closed incision negative pressure therapy (ciNPT): a prospective, randomised, single-institution study. International Wound Journal 2017. 24. Marald Wikkeling, Judith Mans, Timothy Styche. Single use negative pressure wound therapy in vascular patients: clinical and economic outcomes. Journal of Wound Care Vol 30, No 9, September 2021

Mölnlycke® Z-Flo™ Fluidized Positioner

Tailored positioning designed to maximize immersion and envelopment

Contoured envelopment

- Ability to customize shape and dictate position
- Maintains set position more effectively than foam, wedges or pillows¹
- Can accommodate medical devices, tubes or pre-existing conditions

Highly effective immersion

- Continuously redistributes pressure to protect patients at risk
- Minimizes tissue loads
- Significantly reduces stress and shear compared to medical foam and gel products^{2,3}



How Z-Flo™ Fluidized Positioners works

Z-Flo Fluidized Positioners are used to mitigate pressure injury risk factors while maintaining neutral body alignment. Our patented and versatile positioners are not predisposed to an existing shape. Therefore, each distinctive patient, their anatomy, medical devices and pre-existing conditions can be addressed and accounted for. Z-Flo Fluidized Positioners provide measurable patient and economic rewards across the patient care journey.



Occipital protection and positive airway breathing



Dictate and tailor patient turns



Heel offloading

Indications for use

Mölnlycke Z-Flo Fluidized Positioner is designed to provide patient positioning, pressure redistribution and/or to offload anatomical sites, which may be used as part of a prophylactic therapy to help prevent pressure ulcers.

Mölnlycke® Z-Flo™ Fluidized Positioner ordering information

Adult

Product Code	Description	Size	Unit of Meas.	Qty. per UOM	HCPSC Code
1401001	Small Positioner with 2 Tabs	11" x 22"	EA	1	E0190
1401003	Medium Positioner with Tab	16" x 30"	EA	1	E0190
1401005	Large Positioner	25" x 36"	EA	1	E0190
1401007	Small Positioner	12" x 20"	CA	8	E0190
1401008	Small Positioner with Cover	12" x 20"	CA	8	E0190
1401011	Medium Positioner	16" x 30"	EA	1	E0190
1400902	Adult Positioner Kit - 1 Medium Positioner (16" x 30") and 1 Small Positioner (12" x 20")		EA	1	—

Z-flo Positioner Cover ordering information available on pg. 50

References: 1. Cooper, M., et.al., Bundling for Change: Implementing Pressure Injury Prevention, Poster WOCN 2017 Conference 2. Katzungold R, Gefen A. What makes a good head positioner for preventing occipital pressure ulcers. International Wound Journal. 2017; 1-7
3. Katzungold, R, & Gefen, A. (2019). Modelling an adult human head on a donut-shaped gel head support for pressure ulcer prevention. International Wound Journal, 1-10.

Mölnlycke® Z-Flo™ Fluidized Neonatal Positioner

Neonatal Developmental Positioning



Cognitive
Development
via better sleep



Flexed, contained
and midline

How Z-Flo™ Fluidized Neonatal Positioners work

Z-Flo Fluidized Positioners promote midline orientation, flexion and comfort. In a randomized controlled trial, the use of Z-Flo vs. standard positioning devices found that infants calmed more easily, showed reduced wakefulness and were observed to sleep better. In addition to aiding in neuromuscular development, the supportive positioning product points to improved outcomes in flexor tone, symmetrical movement, head shape and ROM for NICU patients.⁵

Indications for use

Mölnlycke Z-Flo Fluidized Positioner is designed to provide patient positioning, pressure redistribution and/or to offload anatomical sites, which may be used as part of a prophylactic therapy to help prevent pressure ulcers.



Reduce interface pressure, friction and shear by supporting the occiput, ears and neck while promoting positive airway breathing⁶



Support and align medical tubing and lines while avoiding torque and tension that could affect infant tissues or position⁴

Mölnlycke® Z-Flo™ Fluidized Positioner order information

Neonatal and Pediatric

Product Code	Description	Size	Unit of Meas.	Qty. per UOM	HCPSC Code
1400227	Small Positioner with Cover	7" x 10"	CA	12	-
1400239	Medium Positioner with Cover	9" x 15"	CA	6	-
1400200	Large Positioner with Cover	12" x 20"	CA	6	E0190
1400222	Small Tube with 3 Disposable Covers (w/ 18 disposable covers)	30" x 6.5"	CA	6	-
1400224	Large Tube Positioner with Cover	60" x 6.5"	CA	6	-
1400206	Medium Full Body Positioner with Cover	16" x 24"	CA	6	E0190
1400213	Large Full Body Positioner with Cover	20" x 30"	CA	4	-
1400304	Medium Full Body Kit - 1 Medium Full Body (16"x 24"), 1 Small Positioner (7"x 10"), 2 Covers and 2 Straps (20")		CA	6	-

Z-flo Neonatal Positioner Cover ordering information available on pg. 50

Reference: 1. Visscher, M., Lacina, L., Casper, T. et al. Conformational Positioning Improves Sleep in Premature Infants with Feeding Difficulties. The Journal of Pediatrics, 2014. www.jpeds.com 2. Altimier, L., & Phillips, R. (2016). The neonatal integrative developmental care model: Advanced clinical applications of the seven core measures for neuroprotective family-centered developmental care. Newborn And Infant Nursing Reviews, 16, 230-244. doi:10.1053/j.nainr.2016.09.030. 3. Visscher, M., Lacina, L., Casper, T. et al. Conformational Positioning Improves Sleep in Premature Infants with Feeding Difficulties. The Journal of Pediatrics, 2014. www.jpeds.com 4. Hunter, J. (2010). Therapeutic Positioning: Neuromotor, Physiologic, and Sleep Implications. In Developmental Care of Newborns and Infants, A Guide for Health Professionals, 2nd ed pp. 285-312. Glenview: NANN.) 5. Barr, Jannie. The trials and tribulations of the introduction and implementation of new positioning products in the NICU. Poster presentation, Mid-America Neonatal Therapists Association 6. Brennan M and Laconti, D. Using Conformational Positioning to Reduce Hospital-Acquired Pressure Ulcers. Journal of Nursing Quality, 2013

Mölnlycke® Tortoise® Sling System

A support surface that provides pressure redistribution



How the Tortoise™ Sling System works

The Mölnlycke Tortoise Sling is your all-in-one solution for patient handling. With easy-to-use features and a sleek design, the Tortoise Sling aids in patient transfers from bed to chair without compromising quality of care to the patient and caregiver. The handling of the patient can either be performed by connecting the device to a lift or by manual usage.

Indications for use

Mölnlycke Tortoise Sling system is designed to provide patient turning and repositioning, which may be used as part of a prophylactic therapy to help prevent pressure ulcers. Indications for use: patient turning and repositioning; pressure redistribution; lateral transfer; vertical transfer.

Benefits of the Tortoise™ Sling System

- Safe, secure patient moving and maintainable repositioning to protect at-risk anatomical sites¹
- Less effort required to effectively turn and reposition patients¹
- Low profile air chamber adapts to the patient by positive air displacement²
- Designed to greatly increase patient's comfort
- For single patient use only
- Remain under the patient for continuous support for the duration of care

Mölnlycke® Tortoise® Sling ordering information

Product Code	Product Name	Product Description	Units	HCPCS Code
1400805	Mölnlycke Tortoise Sling System - Standard	Sling PAD and Z-Flo Positioner	1	E0621
1400806	Mölnlycke Tortoise Sling System - Bariatric	Sling PAD and Z-Flo Positioner	1	E0621
1400807	Mölnlycke Tortoise Sling - Standard	Sling PAD	2	E0621
1400808	Mölnlycke Tortoise Sling - Bariatric	Sling PAD	1	E0621

Reference: 1. Trevellini, A. Chenel. Connecting the dots: pressure ulcer prevention and safe patient handling. Poster presentation. 2. Elling, R. Use of a positive air displacement safe patient handling system to reduce facility acquired pressure injury. Poster presentation. 3. Kass, J. Economic Impact of a Safe Patient Handling and Mobility System on Staff and Safety in a Long term Acute Care Unit. Poster Presentation.

Mölnlycke® Tortoise® Intuitive Turning and Positioning System

A support surface designed for safe patient handling and patient protection

Tortoise Pad

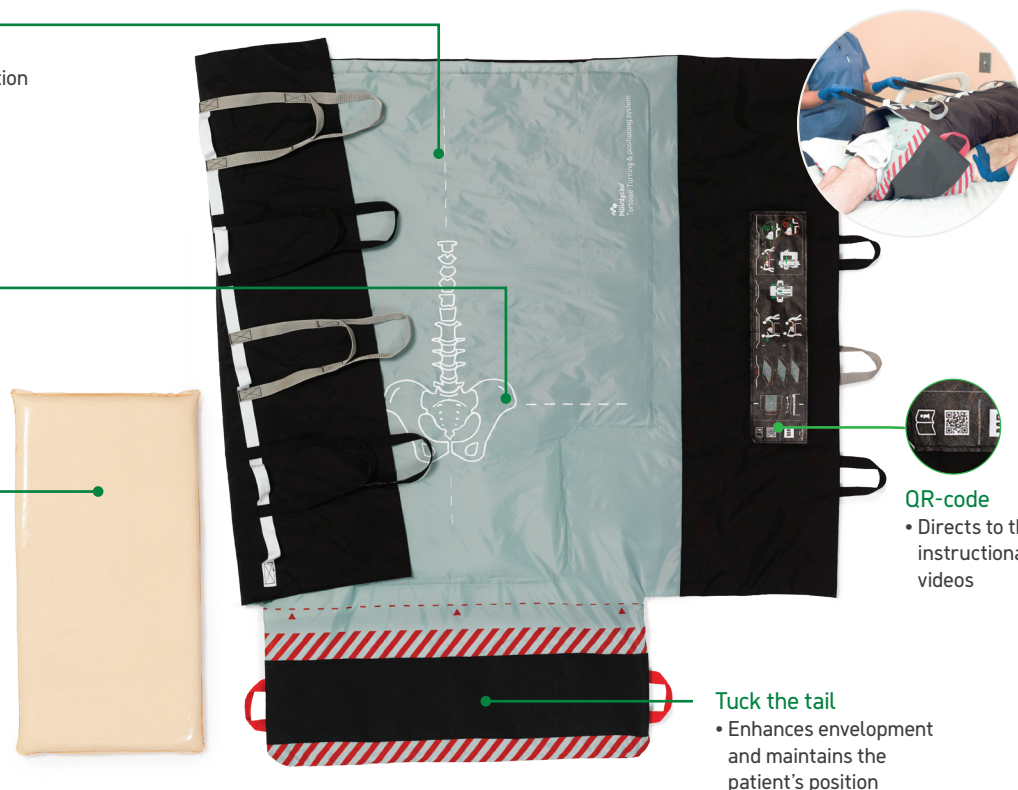
- Enhanced immersion and envelopment for patient protection
- Ergonomic handles for turning, boosting and repositioning

Sacrum and lateral line

- Guides caregivers towards the optimal patient and Tortoise position

Z-Flo® Fluidized Positioner

- To customize shape and dictate position
- Maintains set position more effectively than foam wedges or pillows
- Can accommodate medical devices, tubes or pre-existing conditions



QR-code

- Directs to the instructional videos

Tuck the tail

- Enhances envelopment and maintains the patient's position

How the Mölnlycke® Tortoise® Turning and Positioning System works

The Mölnlycke Tortoise Turning and Positioning System is a unique and simple non-powered system for positioning and offloading that is easy to use, safe for both patients and caregivers and effective in offloading bony prominences.¹ The low pressure air chamber adjusts to the patient's body, evenly redistributing the pressure to offload the sacrum and greater trochanter.² The characteristics of the Mölnlycke® Tortoise Turning and Positioning System, which includes a low-friction mat with reinforced handles to provide an ergonomic grip, allows caregivers to easily turn and reposition the patient to the desired angle. Less strain on caregivers' necks and backs should help reduce the occurrence of back injuries among nurses and hospital staff.³

Available in a Bariatric size to accommodate Bariatric sized beds. Tortoise Turning and Positioning system can also be used for lateral transfer of patients weighing up to 880 lbs.

Benefits of the Mölnlycke® Tortoise® Turning and Positioning System

- Safe, secure patient moving and maintainable repositioning to protect at-risk anatomical sites¹
- Less effort required to effectively turn and reposition patients¹
- Low profile air chamber adapts to the patient by positive air displacement²
- Designed to greatly increase patient's comfort
- For single patient use only

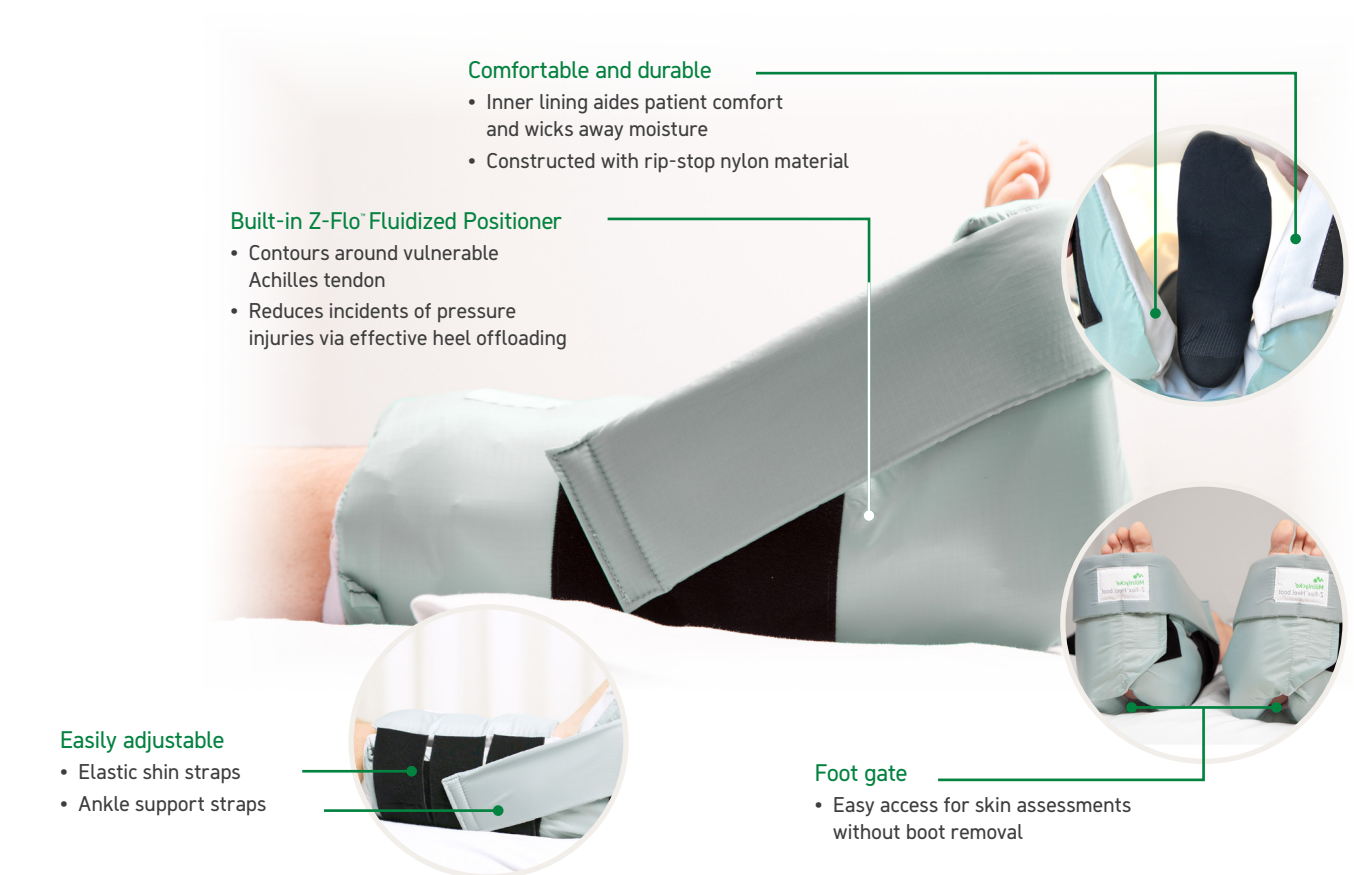
Mölnlycke® Tortoise® Intuitive Turning and Positioning System ordering information

Product Code	Description	Units of Measure	Pcs/case	HCPCS Code
1400800	Tortoise Intuitive Turning and Positioning System - (1) Tortoise PAD (38" x 58") and (1) Z-Flo® Fluidized Positioner (16" x 30")	CA	1	A9270
1400801	Tortoise Intuitive Turning and Positioning System - Bariatric - (1) Tortoise PAD (49" x 58") and (1) Z-Flo® Fluidized Positioner (25" x 36")	CA	1	E0621
1400802	Tortoise Intuitive Turning and Positioning System - Prone - (1) Tortoise PAD (38" x 58"), (1) Prone PAD (32" x 35 x 5"), and (2) Z-Flo® Fluidized Positioners (25" x 36") + (11" x 22")	CA	1	A9270

Reference: 1. Trevellini, A. Chenel. Connecting the dots: pressure ulcer prevention and safe patient handling. Poster presentation. 2. Elling, R. Use of a positive air displacement safe patient handling system to reduce facility acquired pressure injury. Poster presentation. 3. Kass, J. Economic Impact of a Safe Patient Handling and Mobility System on Staff and Safety in a Long term Acute Care Unit. Poster Presentation.

Mölnlycke® Z-Flex™ Fluidized Heel Boot

Offloading to minimize risk of heel pressure injury



Comfortable and durable

- Inner lining aides patient comfort and wicks away moisture
- Constructed with rip-stop nylon material

Built-in Z-Flo® Fluidized Positioner

- Contours around vulnerable Achilles tendon
- Reduces incidents of pressure injuries via effective heel offloading

Easily adjustable

- Elastic shin straps
- Ankle support straps

Foot gate

- Easy access for skin assessments without boot removal

How Z-Flex® Fluidized Heel Boot works

The Mölnlycke Z-Flex Fluidized Heel Boot delivers easy to use, comfortable heel protection that increases patient satisfaction. Within Z-Flex, an air chamber encourages neutral alignment while creating lift of the heel via Positive Air Displacement. For added protection, our patented Z-Flo® Fluidized Positioner contours around the vulnerable Achilles tendon, protecting and comforting your patient while further enhancing heel offloading.

Benefits of Z-Flex® Fluidized Heel Boots

- Designed to offload the heel and maintain an anatomically neutral foot position
- Built-in foot gate provides easy access for skin assessments without boot removal
- Z-Flo contours around vulnerable Achilles tendon
- Adjustable ankle straps accommodate a variety of leg sizes
- Compatible with sequential compression devices
- Integrated air chamber reduces the risk of hyperextension of the knee
- Drives high patient and staff satisfaction²

Areas of use

- Heels

Z-Flex® Fluidized Heel Boot order information

Product Code	Description	Unit of Meas.	Qty. per UOM	HCPSC code
1400122	Z-Flex Fluidized Boot - heel protector with gate and ankle strap	CA	2	E0191
1400123	Z-Flex Fluidized Boot - heel protector with gate and ankle strap	CA	8	E0191

Ordering information

Mepilex® Border Flex†



Product Code	Size	Pcs/box	Pcs/case	HCPCS
595200	3" x 3" (7.5 x 7.5 cm)	5	50	A6212
595300	4" x 4" (10 x 10 cm)	5	50	A6212
595400	6" x 6" (15 x 15 cm)	5	50	A6213
595600	6" x 8" (15 x 20 cm)	5	50	A6213

Mepilex® Border Flex Oval†



Product Code	Size	Pcs/box	Pcs/case	HCPCS
583300	5.1" x 6.3" (13 x 16 cm)	5	35	A6212
583400	6" x 7.5" (15 x 19 cm)	5	45	A6213
583500	3.1" x 4" (7.8 x 10 cm)	5	50	A6212

Mepilex® Border Flex Lite†



Product Code	Size	Pcs/box	Pcs/case	HCPCS
581011	1.6" x 2" (4 x 5 cm)	10	70	A6212
581101	2" x 5" (5 x 12.5 cm)	5	65	A6212
581200	3" x 3" (7.5 x 7.5 cm)	5	70	A6212
581300	4" x 4" (10 x 10 cm)	5	50	A6212
581500	6" x 6" (15 x 15 cm)	5	50	A6213

Mepilex® Border Sacrum †



Product Code	Size	Pcs/box	Pcs/case	HCPCS
282055	6.3" x 7.9" (16 x 20 cm)	10	50	A6213
282455	8.7" x 9.8" (22 x 25 cm)	10	40	A6213

Mepilex® Border Ag†



Product Code	Size	Pcs/box	Pcs/case	HCPCS
395290	3" x 3" (7.5 x 7.5 cm)	5	70	A6212
395390	4" x 4" (10 x 10 cm)	5	50	A6212
395490	6" x 6" (15 x 15 cm)	5	50	A6213
395690	6" x 8" (15 x 20 cm)	5	45	A6213
395790	4" x 10" (10 x 25 cm)	5	35	A6212
395890	4" x 8" (10 x 20 cm)	5	35	A6212
395990	4" x 12" (10 x 30 cm)	5	25	A6213

Mepilex® Border Sacrum Ag†



Product Code	Size	Pcs/box	Pcs/case	HCPCS
382090	7.2" x 7.2" (18 x 18 cm)	5	40	A6213
382490	9.2" x 9.2" (23 x 23 cm)	5	25	A6213

Mepilex® Border Heel †



Product Code	Size	Pcs/box	Pcs/case	HCPCS
282790	8.7" x 9.1" (22 x 23 cm)	10	30	A6210

Mepilex® Border Post-Op†



Product Code	Size	Pcs/box	Pcs/case	HCPCS
496100	2.5" x 3" (6 x 8 cm)	10	100	—
496200	3.5" x 4" (9 x 10 cm)	10	100	—
496300	4" x 6" (10 x 15 cm)	10	100	A4649
496405	4" x 8" (10 x 20 cm)	5	25	A4649
496455	4" x 10" (10 x 25 cm)	5	30	A4649
496605	4" x 12" (10 x 30 cm)	5	25	A4649
496650	4" x 14" (10 x 35 cm)	5	50	A4649

Mepilex® Border Post-Op Ag†



Product Code	Size	Pcs/box	Pcs/case	HCPCS
498100	2.5" x 3" (6 x 8 cm)	5	20	—
498200	3.5" x 4" (9 x 10 cm)	5	50	—
498300	4" x 6" (10 x 15 cm)	5	70	A6212
498400	4" x 8" (10 x 20 cm)	5	25	A6212
498450	4" x 10" (10 x 25 cm)	5	35	A6212
498600	4" x 12" (10 x 30 cm)	5	25	A6213
498650	4" x 14" (10 x 35 cm)	5	60	A6213

Mepilex†



Product Code	Size	Pcs/box	Pcs/case	HCPCS
294199	4" x 4" (10 x 10 cm)	5	70	A6209
294090	4" x 5" (10 x 12 cm)	5	50	A6210
294299	4" x 8" (10 x 20 cm)	5	45	A6210
294399	6" x 6" (15 x 15 cm)	5	25	A6210
294499	8" x 8" (20 x 20 cm)	5	20	A6211
294500	8" x 20" (20 x 50 cm)	2	12	A6211

Mepilex® Heel†



Product Code	Size	Pcs/box	Pcs/case	HCPCS
288100	5" x 8" (13 x 20 cm)	5	25	A6210

Mepilex® Ag†



Product Code	Size	Pcs/box	Pcs/case	HCPCS
287100	4" x 4" (10 x 10 cm)	5	70	A6209
287090	4" x 5" (10 x 12 cm)	5	70	A6210
287200	4" x 8" (10 x 20 cm)	5	45	A6210
287300	6" x 6" (15 x 15 cm)	5	25	A6210
287400	8" x 8" (20 x 20 cm)	5	20	A6211
287500	8" x 20" (20 x 50 cm)	2	10	A6211

†Packaged sterile in single packs

Ordering information

Mepilex® Up†



Product Code	Size	Pcs/box	Pcs/case	HCPCS
212199	4" x 4" (10 x 10 cm)	10	40	A6209
212299	4" x 8" (10 x 20 cm)	10	30	A6210
212399	6" x 6" (15 x 15 cm)	10	30	A6210
212499	8" x 8" (20 x 20 cm)	10	30	A6211

Mepilex® Lite†



Product Code	Size	Pcs/box	Pcs/case	HCPCS
284599	8" x 20" (20 x 50 cm)	4	24	—
284090	2.4" x 3.4" (6 x 8.5 cm)	5	70	A6209
284190	4" x 4" (10 x 10 cm)	5	50	A6209
284123	5" x 5" (12.5 x 12.5 cm)	5	50	A6210
284390	6" x 6" (15 x 15 cm)	5	50	A6210

Mepilex® Transfer†



Product Code	Size	Pcs/box	Pcs/case	HCPCS
294899	6" x 8" (15 x 20 cm)	5	40	A6210
294599	8" x 20" (20 x 50 cm)	4	24	A6211

Mepilex® Transfer Ag†



Product Code	Size	Pcs/box	Pcs/case	HCPCS
394190	4" x 5" (10 x 12.5 cm)	5	50	A6210
394890	6" x 8" (15 x 20 cm)	10	50	A6210
394590	8" x 20" (20 x 50 cm)	2	12	A6211

Mepitel® One†



Product Code	Size	Pcs/box	Pcs/case	HCPCS
289100	2" x 3" (5 x 7.5 cm)	10	70	A6206
289300	3" x 4" (7.5 x 10 cm)	10	40	A6206
289500	4" x 7" (10 x 18 cm)	10	70	A6207
289700	6.8" x 10" (17 x 25 cm)	5	40	A6208
289750	10.8" x 20" (27.5 x 50 cm)	2	14	A6208

Mepitel®†



Product Code	Size	Pcs/box	Pcs/case	HCPCS
290599	2" x 3" (5 x 7.5 cm)	10	50	A6206
290799	3" x 4" (7.5 x 10 cm)	10	40	A6206
291099	4" x 7" (10 x 18 cm)	10	70	A6207
292005	8" x 12" (20 x 30 cm)	5	30	A6208

Mepitel® Ag†



Product Code	Size	Pcs/box	Pcs/case	HCPCS
390590	2" x 3" (5 x 7.5 cm)	10	50	A6206
390790	3" x 4" (7.5 x 10 cm)	10	40	A6206
390090	4" x 5" (10 x 12 cm)	10	60	A6207
391090	4" x 7" (10 x 18 cm)	10	70	A6207
392090	8" x 12" (20 x 30 cm)	5	30	A6208
392059	8" x 20" (20 x 50 cm)	2	12	A6208

Exufiber††



Product Code	Size	Pcs/box	Pcs/case	HCPCS
709900	2" x 2" (5 x 5 cm)	10	40	A6196
709901	4" x 4" (10 x 10 cm)	10	80	A6196
709902	4" x 4.8" (10 x 12 cm)	10	60	A6197
709903	6" x 6" (15 x 15 cm)	10	60	A6197
709909	0.8" x 17.7" (2 x 45 cm)	5	25	A6196

Exufiber® Ag††



Product Code	Size	Pcs/box	Pcs/case	HCPCS
603421	2" x 2" (5 x 5 cm)	10	40	A6196
603425	4" x 4" (10 x 10 cm)	10	60	A6196
603422	4" x 4.8" (10 x 12 cm)	10	60	A6197
603423	6" x 6" (15 x 15 cm)	10	60	A6197
603424	8" x 12" (20 x 30 cm)	5	20	A6198
603420	0.8" x 17.7" (2 x 45 cm)	5	20	A6199

Melgisorb® Plus †



Product Code	Size	Pcs/box	Pcs/case	HCPCS
252000	2" x 2" (5 x 5 cm)	10	100	A6196
252200	4" x 4" (10 x 10 cm)	10	100	A6196
252500	4" x 8" (10 x 20 cm)	10	100	A6197
253500	1.25 x 17.7" (3 x 45 cm)	5	50	A6199

Melgisorb® Ag†



Product Code	Size	Pcs/box	Pcs/case	HCPCS
255050	2" x 2" (5 x 5 cm)	10	100	A6196
255100	4" x 4" (10 x 10 cm)	10	100	A6196
255150	6" x 6" (15 x 15 cm)	10	100	A6197
255200	8" x 12" (20 x 30 cm)	5	50	A6198
255600	1.2" x 18" (3 x 44 cm)	10	100	A6199

†Packaged sterile in single packs

Ordering information

Normlgel® Ag[†]



Product Code	Size	Pcs/box	Pcs/case	HPCPS
350450	1.5 oz (45 gm)	10	30	A6248

†Normlgel® Ag is unsterile and packed in tubes

Mesalt[†]



Product Code	Size	Pcs/box	Pcs/case	HPCPS
285580	4" x 4" (2" x 2" folded)	30	240	A6222
285780	6" x 6" (3" x 3" folded)	30	240	A6223
286080	8" x 8" (4" x 4" folded)	30	180	A6224
285280	3/4" x 39" Ribbon	10	80	A6266

Alldress[†]



Product Code	Size	Pcs/box	Pcs/case	HPCPS
265329	4" x 4" (10 x 10 cm)/ 2" x 2" (5 x 5 cm)	10	70	A6203
265349	6" x 6" (15 x 15 cm)/ 4" x 4" (10 x 10 cm)	10	100	A6203
265369	6" x 8" (15 x 20 cm)/ 4" x 6" (10 x 15 cm)	10	120	A6204

Mextra® Superabsorbent



Product Code	Size	Pcs/box	Pcs/case	HPCPS
610000	5" x 5" (12.5 x 12.5 cm)	10	50	A6251
610100	5" x 7" (12.5 x 17.5 cm)	10	40	A6252
610200	5" x 9" (12.5 x 22.5 cm)	10	90	A6252
610300	7" x 9" (17.5 x 22.5 cm)	10	40	A6252
610400	9" x 11" (22.5 x 27.5 cm)	10	40	A6253
610500	9" x 13" (22.5 x 32.5 cm)	10	40	A6253

Mepore® Pro[†]



Product Code	Size	Pcs/box	Pcs/case	HPCPS
670990	3.6" x 4" (9 x 10 cm)	40	320	A6203
671090	3.6" x 6" (9 x 15 cm)	40	320	A6203
671190	3.6" x 8" (9 x 20 cm)	30	180	A6203
671290	3.6" x 10" (9 x 25 cm)	30	180	A6203
671390	3.6" x 12" (9 x 30 cm)	30	270	A6203

Mepore®



Product Code	Size	Pcs/box	Pcs/case	HPCPS
670800	2.5" x 3" (6 x 7 cm)	60	480	—
670900	3.6" x 4" (9 x 10 cm)	50	400	—
671000	3.6" x 6" (9 x 15 cm)	50	400	—
671299	3.6" x 10" (9 x 25 cm)	30	210	—
671300	3.6" x 12" (9 x 30 cm)	30	270	—
671400	3.6" x 14" (9 x 35 cm)	30	180	—

Mepore® Film



Product Code	Size	Pcs/box	Pcs/case	HPCPS
270600	2.4" x 2.6" (6 x 7 cm)	100	600	A6257
271500	4" x 5" (10 x 12.7 cm)	70	210	A6258
272500	4" x 10" (10 x 25 cm)	20	100	A6258
273000	6" x 8.5" (15 x 21.5 cm)	10	50	A6258

Mepiform®



Product Code	Size	Pcs/box	Pcs/case
293199	1.6" x 12" (4 x 30 cm)	5	50
293299	2" x 3" (5 x 7.5 cm)	5	25
293499	4" x 7" (10 x 18 cm)	5	35

Mepitac® [†]



Product Code	Size	Rolls/box	HPCPS
298300	3/4" x 118" (2 x 300 cm)	12	A4452
298400	1.5" x 59" (4 x 150 cm)	12	A4452

Mefix®



Product Code	Size	Pcs/box	Pcs/case	HPCPS
310299 [†]	1" x 11 yds (2.5 cm x 10 m)	1	40	A4450
310599	2" x 11 yds (5 cm x 10 m)	1	40	A4450
311099	4" x 11 yds (10 cm x 10 m)	1	20	A4450
311599	6" x 11 yds (15 cm x 10 m)	1	15	A4450
312000	8" x 11 yds (20 cm x 10 m)	1	10	A4451

[†]Packaged sterile in single packs

Ordering information

Setopress[†]



Product Code	Size	Pcs/box	Pcs/case	HPCPS
3505	4" x 138" (10cm x 3.5m)	1	12	A6452

Tubifast[®] 2-Way Stretch[™]



Product Code	Line	Product	Limb size	Bandage Width
2434	RED	Small limbs	3.5" - 7.1" (9 - 18 cm)	1.5" (3.5 cm)
2436	GREEN	Small and medium limbs	5.5" - 9.5" (14 - 24 cm)	2" (5 cm)
2438	BLUE	Large limbs	9.5" - 15.8" (24 - 40 cm)	3" (7.5 cm)
2440	YELLOW	Extra-large limbs, heads, children's trunks	13.8" - 25.2" (35 - 64 cm)	4.5" (10.75 cm)
2444	PURPLE	Large adult trunks	25.2" - 51.2" (64 - 130 cm)	8" (20 cm)

Tubifast[®] Garments



Product Code	Description	Age/Size
992007	Vest	6-24 months
992008	Vest	2-5 years
992009	Vest	5-8 years
992010	Vest	8-11 years
992011	Vest	11-14 years
992012	Tights	6-24 months
992013	Leggings	2-5 years
992014	Leggings	5-8 years
992015	Leggings	8-11 years
992016	Leggings	11-14 years
992017	Socks	One size fits all 2-14 yrs
5922	Gloves	Extra Small Child
5923	Gloves	Small Child
5921	Gloves	Med/Lg Child - Sm/Med Adult
5920	Gloves	Medium/Large Adult

Tubifast[®] recommended fitting sizes:



Vests, Tights		
	6-24 months	2 - 5 years
Height	74 - 86 cm	86-110 cm
Inside Leg	28 - 34 cm	34 - 47 cm
Arm Length	25 - 29.5 cm	29.5 - 35.5 cm
Vests, Leggings		
	5 - 8 years	8 - 11 years
Height	110 - 128 cm	128 - 146 cm
Inside Leg	47 - 58 cm	58 - 68 cm
Arm Length	35.5 - 42 cm	42 - 49 cm
Socks - One size fits all 2 - 14 years		

Tubigrip[®]



		Product Code			HPCPS
Shade		Natural		Beige	
Size		3.28" (1m)	32.81" (10m)	32.81" (10m)	
A	Infant feet and arms	-	1435	-	A6457
B	Small hands and arms	1520	1436	1449	A6457
C	Medium arms, small ankles	1521	1443	1450	A6457
D	Large arms, medium ankles, small knees	1522	1437	1451	A6457
E	Large ankles, medium knees, small thighs	1528	1434	1448	A6457
F	Large knees, medium thighs	1523	1438	1452	A6457
G	Large thighs	-	1439	1453	A6457
J	Small trunks	-	1440	-	A6457
K	Small/medium trunks	-	1441	-	A6457
L	Large trunks	-	1442	-	A6457

Tubigrip[®] sizes

Size	Min. limb circum. (inch)	Max. limb circum. (inch)	Min. limb circum. (cm)	Max. limb circum. (cm)	Sub-bandage pressure (mmHg)
A	3.9	5.7	10	14.5	20 - 30
B	5.7	11.4	14.5	29	10 - 20
C	8.7	13.8	22	35	
D	10.2	15.7	26	40	
E	11.4	18.1	29	46	
F	13.8	20.9	35	53	
G	15.7	24.4	40	62	5 - 15
J	21.3	32.3	54	82	
K	27.6	44.5	70	113	
L	41.7	58.7	106	149	

[†]Packaged sterile in single packs

Ordering information



Dermafit®

Size	Description	Product Code for 10m roll (32.81)	Bandage Size
A	Infant feet and arms	131935	1.75" (4.4 cm)
B	Small hands and limbs	131936	2.00" (5.1 cm)
C	Adult hands and limbs	131943	2.75" (7.0 cm)
D	Large arms and legs	131937	3.25" (8.3 cm)
E	Legs and small thighs	131934	3.75" (9.5 cm)
F	Large knees and thighs	131938	4.25" (10.8 cm)
G	Large thighs	131939	5.50" (14.0 cm)
J	Small trunks	131940	7.00" (17.8 cm)
K	Medium trunks	131941	8.50" (21.6 cm)
L	Large trunks	131942	12.50" (31.8 cm)



Mölnlycke® Z-Flo® Fluidized Positioner: Adult

Product Code	Description	Size	Unit of Meas.	Qty. per UOM	HCPCS Code
1401001	Small Positioner with 2 Tabs	11" x 22"	EA	1	E0190
1401003	Medium Positioner with Tab	16" x 30"	EA	1	E0190
1401005	Large Positioner	25" x 36"	EA	1	E0190
1401007	Small Positioner	12" x 20"	CA	8	E0190
1401008	Small Positioner with Cover	12" x 20"	CA	8	E0190
1401011	Medium Positioner	16" x 30"	EA	1	E0190
1400902	Adult Positioner Kit - (1) Medium Positioner (16" x 30") and (1) Small Positioner (12" x 20")		EA	1	—



Mölnlycke® Z-Flo® Fluidized Positioner Neonatal and Pediatric

Product Code	Description	Size	Unit of Meas.	Qty. per UOM	HCPCS Code
1400227	Small Positioner with Cover	7" x 10"	CA	12	-
1400239	Medium Positioner with Cover	9" x 15"	CA	6	-
1400200	Large Positioner with Cover	12" x 20"	CA	6	E0190
1400222	Small Tube with 3 Disposable Covers (w/ 18 disposable covers)	30" x 6.5"	CA	6	-
1400224	Large Tube Positioner with Cover	60" x 6.5"	CA	6	-
1400206	Medium Full Body Positioner with Cover	16" x 24"	CA	6	E0190
1400213	Large Full Body Positioner with Cover	20" x 30"	CA	4	-
1400304	Medium Full Body Kit - (1) Medium Full Body (16" x 24"), (1) Small Positioner (7" x 10"), (2) Covers and (2) Straps (20")		CA	6	-

The information provided in this brochure is not to be construed as the practice of medicine or substituted for the independent medical judgment of a patient's treating physician. Information contained herein, including but not limited to suggestions for product wear time, product selection and suggested use is based on generalizations and does not consider the unique characteristics of an individual's wound. Each patient's physician shall remain solely responsible for assessing the severity of patient wounds, determining the appropriate treatment, and managing treatment of the wound. For additional information, please refer to the applicable product insert or contact Mölnlycke Health Care US, LLC at 1-800-843-8497

Ordering information



Z-Flo™ Positioner Covers

Product Code	Description	Size	Adult	Neonatal/Pediatric	Pcs/case
1400228	Washable Covers - Small	7" x 10"		X	50
1400240	Washable Covers - Medium	9" x 15"		X	50
1400201	Washable Covers - Large	12" x 20"	X	X	50
1400207	Washable Covers - Medium, Full body	16" x 24"		X	50
1400215	Washable Covers - Large, Full body	20" x 30"		X	50
1400225	Washable Covers - Large Tube	60" x 6.5"		X	50
1400218	Washable Straps	20"		X	50
1400229	Disposable Covers - Small	7" x 10"		X	50
1400241	Disposable Covers - Medium	9" x 15"		X	50
1400202	Disposable Covers - Large	12" x 20"	X	X	50
1400208	Disposable Covers - Medium, Full Body	16" x 24"		X	50
1400216	Disposable Covers - Large, Full Body	20" x 30"		X	50



Mölnlycke® Tortoise® Sling

Product Code	Product Name	Description	Units	HCPCS Code
1400805	Mölnlycke Tortoise Sling System - Standard	Sling PAD and Z-Flo® Positioner	1	E0621
1400806	Mölnlycke Tortoise Sling System - Bariatric	Sling PAD and Z-Flo® Positioner	1	E0621
1400807	Mölnlycke Tortoise Sling - Standard	Sling PAD	2	E0621
1400808	Mölnlycke Tortoise Sling - Bariatric	Sling PAD	1	E0621



Mölnlycke® Tortoise® Intuitive Turning and Positioning System

Product Code	Description	Units of Meas.	Pcs/ case	HCPCS Code
1400800	Tortoise Intuitive Turning and Positioning System - (1) Tortoise PAD (38" x 58") and (1) Z-Flo Fluidized Positioner (16" x 30")	CA	1	A9270
1400801	Tortoise Intuitive Turning and Positioning System - Bariatric - (1) Tortoise PAD (49" x 58") and (1) Z-Flo Fluidized Positioner (25" x 36")	CA	1	E0621
1400802	Tortoise Intuitive Turning and Positioning System - Prone - (1) Tortoise PAD (38" x 58"), (1) Prone PAD (32" x 35 x 5"), and (2) Z-Flo Fluidized Positioners (25" x 36") + (11" x 22")	CA	1	A9270

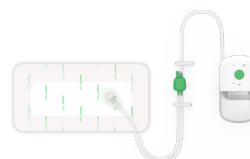
Ordering information

Z-Flex™ Fluidized Heel Boot



Product Code	Description	Unit of Meas.	Qty. per UOM	HCPCS code
1400122	Z-Flex Fluidized Boot - heel protector with gate and ankle strap	CA	2	E0191
1400123	Z-Flex Fluidized Boot - heel protector with gate and ankle strap	CA	8	E0191

Avance® Solo



Product Code	ciNPT	Pcs/box	Pcs/case	HCPCS
8881020	Avance Solo set (10 cm x 20 cm)	1	2	A9272
8881030	Avance Solo set (10 cm x 30 cm)	1	2	A9272
8881035	Avance Solo set (10 cm x 35 cm)	1	2	A9272
881020	10 cm x 20 cm dressing	2	4	-
881030	10 cm x 30 cm dressing	2	4	-
881035	10 cm x 35 cm dressing	2	4	-

Product Code	dNPWT	Pcs/box	Pcs/case	HCPCS
8880050	Pump and canister set	1	2	A9270
880050	Avance Solo Canister	4	8	-
881515	15 cm x 15 cm dressing	2	4	-
881520	15 cm x 20 cm dressing	2	4	-
881530	15 cm x 30 cm dressing	2	4	-
882020	20 cm x 20 cm dressing	2	4	-
882525	25 cm x 25 cm dressing	2	4	-
882000	Avance Solo Foam	4	8	A9270

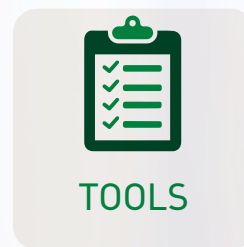
U.S. Clinical Learning Hub

Powered by Mölnlycke®

Online Healthcare Professional Education



CE COURSES



TOOLS



PODCASTS

Clinical Learning Hub advances the performance in healthcare by equipping professionals with continuing education through:

- **FREE** Accredited CE courses
- Evidence-based resources
- Podcasts
- Expert webinars
- Product training videos

SCAN HERE

to access or create a new account
us.clinicallearning.com



Delivering reliability through a strong supply chain

Successful outcomes start here

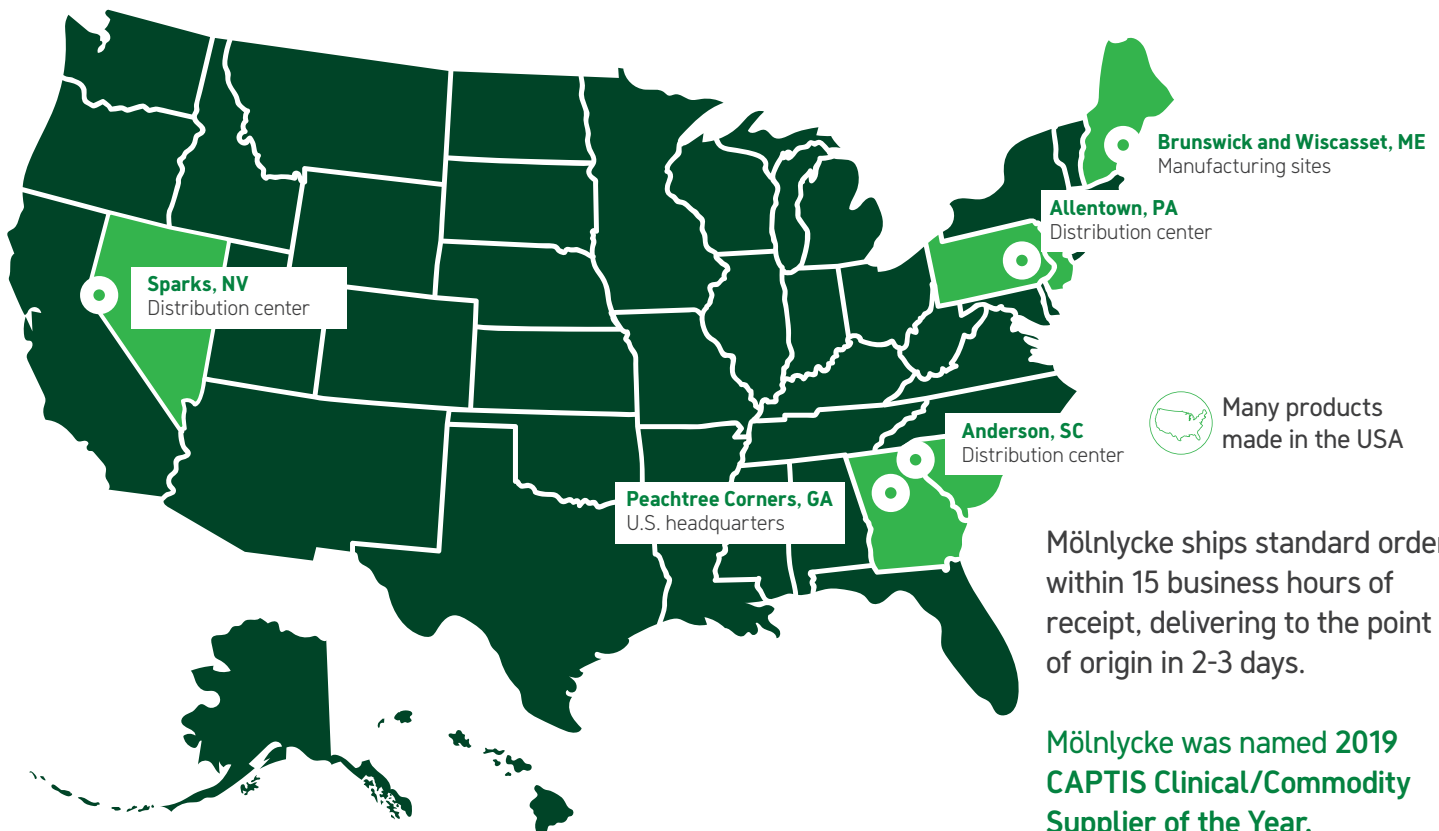
When you work with Mölnlycke, you can count on the solutions you need, when you need them.

We've designed a manufacturing and distribution process for high availability, order efficiency and fast delivery.

We maintain **duplicate manufacturing locations** for many of our products; in fact, many of our solutions are produced in the U.S.

Where possible, we prioritize dual sourcing among carefully selected, and **geographically diverse**, suppliers.

Distribution centers are **strategically located** to expedite access throughout the U.S. and provide **flexibility** around weather or disaster-related travel disruptions.





We're here to help you, when you need us.
Call your Mölnlycke Health Care Representative or Clinical Specialist.

1-800-843-8497 | www.molnlycke.us | 5445 Triangle Pkwy, Ste 400, Peachtree Corners, GA, 30092

The Mölnlycke Health Care, Mepilex, Mepitel, Mepiform, Mepitac, Safetac, Exufiber, Melgisorb, Normigel, Alldress, Mepore, Mesalt, Mefix, Lyofoam, Mextra, Tubifast, Dermafit, Tubigrip, Setopress, EZ Derm, Tortoise, Avance and Z-Flex trademarks, names and logo types are registered globally to one or more of the Mölnlycke Health Care Group of Companies. Distributed by Mölnlycke Health Care US, LLC, Peachtree Corners, Georgia 30092. © 2023 Mölnlycke Health Care AB. All rights reserved. 1-800-882-4582. -Mölnlycke Health Care wound care products can serve as integral components of wound management programs. If infection is suspected, product use may be continued if proper infection treatment is initiated and if recommended by a physician.

DISCLAIMER: This document is not a complete guide on all matters related to reimbursement, nor does Mölnlycke Health Care guarantee that its use will result in payment for services. This information is subject to change over time, and may be incorrect at any time following publication. The reader is encouraged to independently verify data and confirm the applicability of any coding or billing practice with applicable payers prior to submitting claims. The reader is solely responsible for compliance with applicable laws.