



WOUND CARE
**Product
Catalog**

Updated 4.23





Get to know the ö

We're "Mon • lik • a." We focus on helping care teams deliver their absolute best for patients. More specifically, we address some of the most persistent and stressful issues associated with routine care delivery. Pressure injuries, hospital-acquired infections, clinician injuries — all have devastating and very costly impacts on human lives and health systems.

The right medical solutions can make all the difference.

From our Biogel® surgical gloves, Mepilex® dressings and Hibiclens® patient bathing solutions to our smartly designed turning and positioning devices, Mölnlycke® products simply work better. They're more comfortable for the patient and often more efficient in terms of utilization.

The more you know about Mölnlycke, the more our difference becomes clear.

Table of Contents

BORDERED FOAM DRESSINGS

Mepilex® Border Flex / Mepilex® Border Flex Oval	4
Mepilex® Border Flex Lite	5
Mepilex® Border Sacrum	6
Mepilex® Border Heel	7
Mepilex® Border Post-Op	8
Mepilex® Border Post-Op Ag	9
Mepilex® Border Ag / Mepilex® Border Sacrum Ag . . .	10

FOAM DRESSINGS

Mepilex® / Mepilex® Heel	11
Mepilex® Ag	12
Mepilex® XT	13
Mepilex® Lite	14
Mepilex® Transfer	15
Mepilex® Transfer Ag	16
Lyof foam® Max / Lyof foam® Max T	17

CONTACT LAYER DRESSINGS

Mepitel® One	18
Mepitel®	19
Mepitel® Ag	20

ANTIMICROBIAL DRESSINGS

Exufiber®	21
Exufiber® Ag +	22
Melgisorb® Plus	23
Melgisorb® Ag	24
Normlgel® Ag	25

NON-ADHESIVE ABSORBENT DRESSINGS

Mesalt®	26
Alldress®	27
Mextra® Superabsorbent	28

SELF-ADHESIVE DRESSINGS

Mepore® / Mepore® Pro	29
Mepore® Film	30
Mepiform®	31
Mepitac®	32
Mefix®	33

GARMENTS & BANDAGES

Setopress®	34
Tubifast® 2-Way Stretch	35
Tubifast® Garments	36
Tubigrip®	37
Dermafit®	38

TURNING & POSITIONING

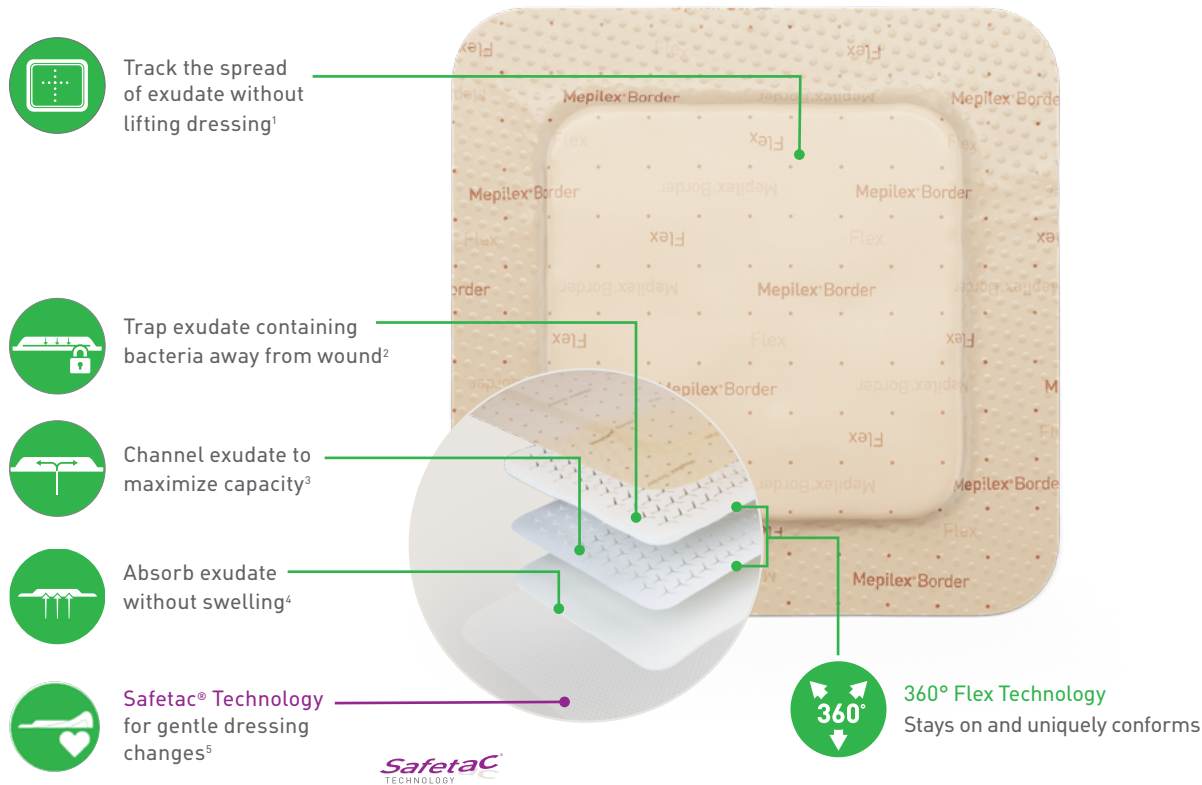
Mölnlycke® Z-Flo™ Fluidized Positioner Adult	39
Mölnlycke® Z-Flo™ Fluidized Positioner Neonatal	40
Mölnlycke® Tortoise® Sling System	41
Mölnlycke® Tortoise® Intuitive System	42
Mölnlycke® Z-Flex™ Fluidized Heel Boot	43

Ordering Information	44
---------------------------------------	-----------

The information provided herein is not to be construed as the practice of medicine or substituted for the independent medical judgment of a patient's treating clinician. This information, including but not limited to suggestions for product selection and suggested use is based on generalizations and does not consider the unique characteristics of an individual patient. Each patient's clinician shall remain solely responsible for assessing patient, determining the appropriate treatment and managing treatment. For additional information, please refer to the applicable product insert or contact Mölnlycke® Health Care at 1-800-843-8497.

Mepilex® Border Flex

The self-adherent all-in-one bordered foam dressing



How Mepilex® Border Flex works

Mepilex Border Flex is a five-layer, bordered foam dressing that is highly conformable due to Flex Technology. It absorbs, channels and traps exudate and allows you to track progress.

Benefits of Mepilex® Border Flex

- Flex Technology provides excellent flexibility⁶ and conformability to avoid early detachment⁷
- Proven to handle more exudate* than other all-in-one foam dressings⁸
- Up to 7-day wear time⁹ with shower-proof dressing¹⁰
- For use on a wide range of chronic and exuding wounds, as well as for pressure injury prevention^{9, **}

Wear time: Mepilex Border Flex may be left in place for up to 7 days depending on the condition of the wound and surrounding skin.

*in vitro studies

**When used as part of an individualized, comprehensive pressure injury prevention protocol.

References: 1. Report PD-528872. 2. PD-537072-04 3. Report PD-52887 4. Report PD-525458. 5. White R et al. Evidence for atraumatic soft silicone wound dressing use. Wounds UK, 2005. 6. Report PD-528870-01. 7. PD-529747. 8. Report PD-527642-01. 9. Mepilex® Border Flex Instructions for Use. 10. Report PD-532095. 11. Tyson, Leigh. Poster Presentation, SAWC, San Antonio, TX.

Indications for use

Mepilex Border Flex is designed for a wide range of exuding wounds such as pressure ulcers, leg and foot ulcers, traumatic wounds (e.g. skin tears) and surgical wounds. Mepilex Border Flex can also be used on dry/necrotic wounds in combination with gels. Mepilex Border Flex reduces postoperative blistering, and may also be used as part of a prophylactic therapy to help prevent skin damage, e.g. pressure ulcers.

Mepilex® Border Flex ordering information

Product Code	Size	Pcs/box	Pcs/case	HCPCS
595200	3" x 3" (7.5 x 7.5 cm)	5	50	A6212
595300	4" x 4" (10 x 10 cm)	5	50	A6212
595400	6" x 6" (15 x 15 cm)	5	50	A6213
595600	6" x 8" (15 x 20 cm)	5	50	A6213

Mepilex® Border Flex Oval

Product Code	Size	Pcs/box	Pcs/case	HCPCS
583300	5.1" x 6.3" (13 x 16 cm)	5	35	A6212
583400	6" x 7.5" (15 x 19 cm)	5	45	A6213
583500	3.1" x 4" (7.8 x 10 cm)	5	50	A6212

Mepilex® Border Flex Lite

The self-adherent all-in-one thin bordered foam dressing



360° Flex Technology

- Stays on and uniquely conforms
- Improves comfort^{1,2}
- Keeps the dressing in place^{1,2}



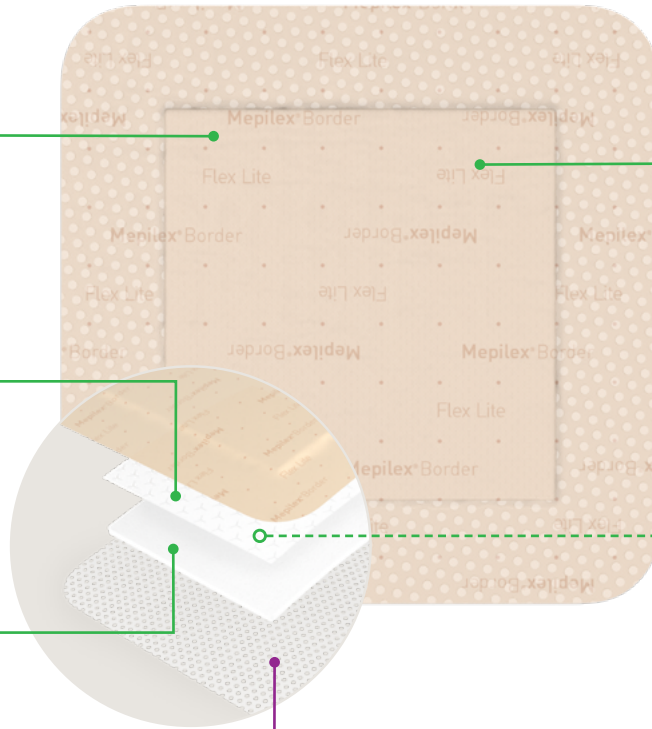
Spreading layer

- Distributes exudate evenly over a wide surface area to maximize exudate management⁹



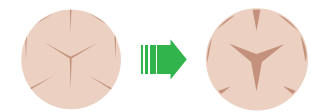
Foam layer

- Absorbs exudate and transports it to the spreading layer⁹
- The 4-layer construction works to absorb and channel exudate away from the wound bed⁹



Highly breathable backing film

- Exudate Progress Monitor lets you track and record exudate progress³
- Backing film provide a barrier to microorganisms larger than 25nm⁴
- Water resistant so your patients can shower⁵



Y-cuts

- Expand to allow movement



Safetac
TECHNOLOGY

Safetac® Technology

- Less painful dressing changes⁶ and reduced risk of maceration⁷⁻⁸

How Mepilex® Border Flex Lite works

Mepilex Border Flex Lite is a four-layer, bordered foam dressing that is highly conformable due to Flex Technology. It absorbs, channels and traps exudate and allows you to track progress.

Benefits of Mepilex® Border Flex

- Flex Technology allows Mepilex Border Flex Lite to move in every direction, reducing skin stress, increasing comfort and keeping it in place^{1,2}
- Up to 77% more conformable than Mepilex® Border Lite^{1,2}
- Up to 7-day wear time⁹ with shower-proof dressing¹⁰
- For use on a wide range of chronic and exuding wounds, as well as for pressure injury prevention^{9, **}

Wear time

Mepilex Border Flex may be left in place for up to 7 days depending on the condition of the wound and surrounding skin.

Indications for use

Mepilex Border Flex Lite is designed for the management of a wide range of non- to moderately exuding wounds such as, leg and foot ulcers, pressure injury, surgical and traumatic wounds such as abrasions, blisters and skin tears and may be used for protection of compromised and/or fragile skin.

Mepilex® Border Flex Lite ordering information

Product Code	Size	Pcs/box	Pcs/case	HCPCS
581011	1.6" x 2" (4 x 5 cm)	10	70	A6212
581101	2" x 5" (5 x 12.5 cm)	5	65	A6212
581200	3" x 3" (7.5 x 7.5 cm)	5	70	A6212
581300	4" x 4" (10 x 10 cm)	5	50	A6212
581500	6" x 6" (15 x 15 cm)	5	50	A6213

*in vitro studies

**When used as part of an individualized, comprehensive pressure injury prevention protocol.

References: 1. Report PD-528872. 2. PD-537072-04 3. Report PD-52887 4. Report PD-525458. 5. White R et al. Evidence for atraumatic soft silicone wound dressing use. Wounds UK, 2005. 6. Report PD-528870-01. 7. PD-529747. 8. Report PD-527642-01. 9. Mepilex® Border Flex Instructions for Use. 10. Report PD-532095. 11. Tyson, Leigh. Poster Presentation, SAWC, San Antonio, TX.

Mepilex® Border Sacrum

The proven 5-layer foam pressure injury prevention dressing¹

Tabs for easy handling

Wider sacral coverage

- Compared to other dressings

Slightly thicker borders*

- For easier handling and better adhesion

Five full layers

- Help deflect extrinsic forces including friction and shear

Safetac® Technology *Safetac*
TECHNOLOGY

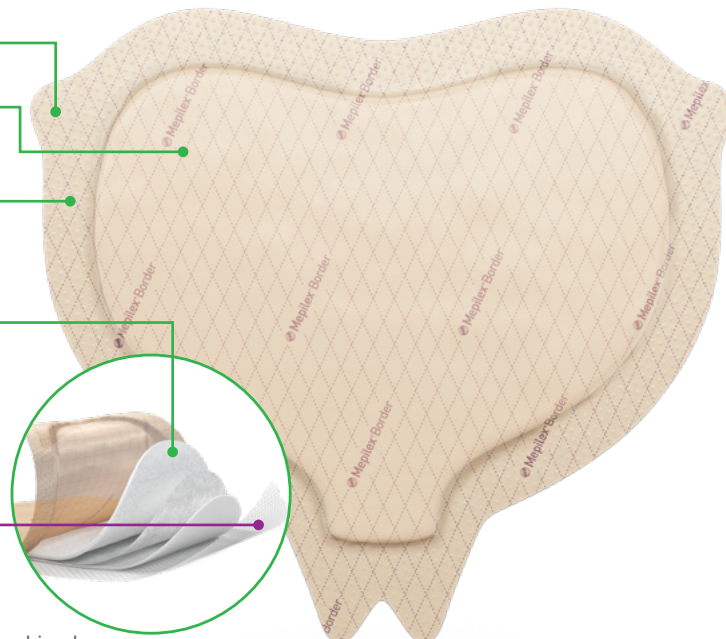
- Reduces risk of maceration^{2,3}

Structural integrity

- For protection even when wet⁴

Deep Defense™ technology for protection from the combined effect of the extrinsic forces responsible for pressure injury:

- Strength in the patient sliding/shearing direction⁵
- Flexibility in the horizontal direction⁵



How Mepilex® Border Sacrum works

Unlike other dressings, the proprietary Mepilex Border Sacrum is the only dressing with Deep Defense™ technology, providing an optimal balance of strength and flexibility. This not only allows the dressing to provide optimal protection against shear in combination with other extrinsic factors, but also maintain its protective properties even with the absorption of sweat.⁵ When used for wound management the Mepilex Border Sacrum is designed for a wide range of exuding wounds such as sacral pressure injury. It can be also used on dry/necrotic wounds in combination with gels.

Benefits of Mepilex® Border Sacrum

- Shaped to fit the sacral area
- Handling tabs for ease of application and removal
- Absorbs moderate to high amounts of exudate
- Optimized protection and sealing at gluteal cleft
- Can be repositioned without losing its adherent properties
- Moisture proof and bacteria barrier† film backing

Wear time

Mepilex Border Sacrum may be left in place for several days depending on the condition of the wound and surrounding skin, or as indicated by accepted clinical practice.

Indications for use

Mepilex® Border is designed for a wide range of exuding wounds such as pressure ulcers, leg and foot ulcers and traumatic wounds e.g. skin tears and surgical wounds. Mepilex® Border can also be used on dry/necrotic wounds in combination with gels. Mepilex® Border may be used as part of a prophylactic therapy to help prevent skin damage, e.g. pressure ulcers, postoperative blistering.

Mepilex® Border Sacrum ordering information

Product Code	Size	Pcs/box	Pcs/case	HCPCS
282055	6.3" x 7.9" (16 x 20 cm)	10	50	A6213
282455	8.7" x 9.8" (22 x 25 cm)	10	40	A6213

References: 1. Nahla Tayyib, RN, MN, BN, Fiona Coyer, RN, PhD, MScNsg, CritCareCert, PGCEA. Effectiveness of Pressure Ulcer Prevention Strategies for Adult Patients in Intensive Care Units: A Systematic Review. Worldviews on Evidence-Based Nursing, 2016; 00:0, 1–13. 2. Wiberg A.B. et al. Preventing maceration with a soft silicone dressing: in-vitro evaluations. Poster presented at the 3rd Congress of the WUWHS, Toronto, Canada, 2008. 3. Meaume, S., Van De Looverbosch, D., Heyman, H., et al. S. A study to compare a new self-adherent soft silicone dressing with a self-adherent polymer dressing in stage II pressure injury. Ostomy Wound Management 2003; 49 (9): 44-51 4. Mölnlycke® Health Care. Test Report - Tensile strength of dressings with different Moisture levels. LIMS ID: 20160808-003-app1. 5. Alten. Finite element analysis studying the effect of different prevention dressings on protecting soft tissues from high stresses and deformation. Ref No. 001. Data on file. 2017. 6. Mölnlycke® Health Care, Test Report, PD-508784 Rev: 01

* Compared with original Mepilex® Border Sacrum

† Microbes larger than 25 nm.

Mepilex® Border Heel

All-in-one heel-shaped dressing for prevention** and management of wounds

Five full layers

- Help deflect extrinsic forces including friction and shear

Safetac® Technology

- Reduces risk of maceration^{2,3}

Coverage of the malleoli

Slightly thicker borders*

- Easy handling
- Better adhesion

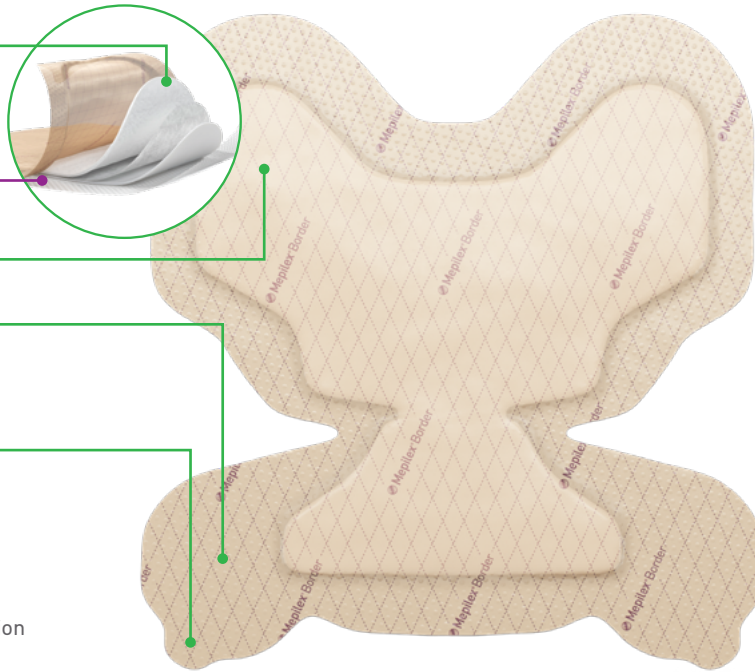
Handling tabs

- For easier heel checks**

Deep Defense™ technology

for protection from the combined effect of the extrinsic forces responsible for pressure injury:³

- Strength in the patient sliding/shearing direction
- Flexibility in the horizontal direction



How Mepilex® Border Heel works

Each of the unique five layers of the Mepilex Border Heel serves a specific purpose, adding to its strength, durability and absorbency. No other dressing on the market exhibits these same properties - or the published, peer-reviewed results - in pressure injury prevention. The design of the Mepilex Border Heel is unique in both absorbing and distributing pressure, shear and friction.^{3,4}

When used for management of wounds, Mepilex Border Heel effectively absorbs and retains exudate² and maintains a moist wound environment. The Safetac technology layer seals the wound edges, prevents exudate leakage onto the surrounding skin, thus minimizing the risk of maceration.¹ The Safetac Technology layer allows the dressing to be changed without damaging the wound or surrounding skin,¹ or exposing the patient to additional pain.⁵

Benefits of Mepilex® Border Heel

- All-in-one and self-adherent – no secondary fixation needed
- Shaped to cover the back, sides and bottom of the heel – no need to cut or adapt
- Safetac Technology minimizes pain and trauma at dressing changes⁵
- Can remain in place for several days
- Can be repositioned without losing its adherent properties
- Moisture proof and bacteria resistant (→ 25nm) film backing⁶

Indications for use

Mepilex® Border is designed for a wide range of exuding wounds such as pressure ulcers, leg and foot ulcers and traumatic wounds e.g. skin tears and surgical wounds. Mepilex Border can also be used on dry/necrotic wounds in combination with gels. Mepilex® Border may be used as part of a prophylactic therapy to help prevent skin damage, e.g. pressure ulcers, postoperative blistering.

Wear time

Mepilex Border Heel may be left in place for several days depending on the condition of the wound and surrounding skin, or as indicated by accepted clinical practice.

Mepilex® Border Heel ordering information

Product Code	Size	Pcs/box	Pcs/case	HCPCS
282790	8.7" x 9.1" (22 x 23 cm)	10	30	A6210

References: 1. Wiberg A.B. et al. Preventing maceration with a soft silicone dressing: in-vitro evaluations. Poster presented at the 3rd Congress of the WUWHs, Toronto, Canada, 2008. 2. Meaume, S., Van De Loooverbosch, D., Heyman, H., et al. S. A study to compare a new self-adherent soft silicone dressing with a self-adherent polymer dressing in stage II pressure injury. *Ostomy Wound Management* 2003; 49 (9): 44-51 3. Levy A., Frank, M.B., Gefen A. The biomechanical efficacy of dressings in preventing heel injury. *J Tissue Viability* 2015; 24: 1, 1-11. 4. Call E. et al. Enhancing pressure prevention using wound dressings: What are the modes of action? *International Wound Journal*, July 30 2013. 5. White R. Evidence for atraumatic soft silicone wound dressing use. *Wounds UK*. Nov 20015, pp104-109 6. Mölnlycke® Health Care, Test Report PD-508784 Rev: 01

* When used as part of an individualized, comprehensive pressure injury prevention protocol

** Compared with original Mepilex® Border Heel

† Microbes larger than 25 nm.

Mepilex® Border Post-Op

The flexible all-in-one post-op dressing

Supports longer wear times and low frequency^{1,2}

- Shower-proof seal and bacteria barrier (microbes larger than 25 nm)[†]
- Ultra-absorbent material absorbs more blood than any other current leading dressing on the market⁴
- Transparent border allows inspection without removal

Safetac®
TECHNOLOGY

Safetac® Technology

- Clinically shown to minimize dressing related skin damage and reduce pain^{1,9}
- Interface adheres gently, maintaining skin integrity

Safetac interface

Unique flex-cut pad

- Supports early patient mobilization⁵
- Stretches in all directions, conforming to the body even as it moves

How Mepilex® Border Post-Op works

Mepilex Border Post-Op is an all-in-one post-op dressing that effectively absorbs and retains exudate. The Safetac® minimizes painful wound and peri-wound skin damage at dressing removal.^{1,2,6} The Safetac interface seals the wound edges, preventing exudate from leaking onto surrounding skin, minimizing risk of maceration.⁶ The flex-cut pad gives high flexibility and good conformability over joints, such as knees or hips, promoting patient mobilization.¹

Benefits of Mepilex® Border Post-Op

- Minimizes skin damage, including blistering⁸
- Very high absorption capacity^{3,4} lead to fewer dressing changes^{1,2}
- High flexibility giving very good comfort and conformability⁷
- Can be lifted and adjusted without losing its adherent properties
- Wide transparent borders for easy wound area inspection
- Bacteria and viral barrier[†]
- Shower proof

Indications for use

Mepilex Border Post-Op is a self-adhesive absorbent surgical dressing designed for exuding wounds. It is intended for acute wounds, such as surgical wounds, cuts and abrasions.

Mepilex® Border Post-Op ordering information

Product Code	Size	Pcs/box	Pcs/case	HCPCS
496300	4" x 6" (10 x 15cm)	10	100	A4649
496405	4" x 8" (10 x 20cm)	5	25	A4649
496455	4" x 10" (10 x 25cm)	5	30	A4649
496605	4" x 12" (10 x 30cm)	5	25	A4649
496650	4" x 14" (10 x 35cm)	5	50	A4649

Additional post-op SKUs located in Ordering Information.

References: 1. Bredow, J. et al. Randomized clinical trial to evaluate the performance of a flexible self-adherent absorbent dressing coated with a soft silicone layer compared to a standard wound dressing after hip, knee or spinal surgery in comparison to standard wound dressing. Poster presentation at 5th Congress of WUWHS, Florence, Italy 2016. 2. Zarghooni, K. et al. Is the use of modern versus conventional wound dressings warranted after primary knee and hip arthroplasty? Acta Orthopaedica Belgica 2015;81(4):768-775. 3. Feili, F et al. Fluid Handling Properties of Post-Operative Wound Dressings. Data on file. 4. Feili, F et al. Blood Absorption Capacity of Post-Operative Wound Dressings. Data on file. 5. Johansson C et al. Preventing post-operative blisters following hip and knee arthroplasty. Wounds International, 2012. 6. White, R. Evidence for atraumatic soft silicone wound dressing use. 7. Van Overschelde P. et al. Effect of two modern dressing on patient outcome after primary hip and knee arthroplasty: a prospective, a randomised controlled study. Oral presentation at the WUWHS conference, Florence, 2016. 8. Korber, K. Clinical Evaluation of a New Silver Soft Silicone Postoperative Dressing in Total Knee and Hip Arthroplasty. POAS Fall 2017. 9. Dykes, P.J., et al. Effects of adhesive dressings on the stratum corneum of skin. J Wound Care 2001; 10: 2, 7-10.

† Microbes larger than 25 nm.

Mepilex® Border Post-Op Ag

The flexible and antimicrobial all-in-one post-op dressing

Shower-proof seal

- With bacteria and viral barrier†

Unique flex-cut pad

- Supports early patient mobilization⁸
- Stretches in all directions, conforming to the body even as it moves

Ultra-absorbent material

- Absorbs more blood than any other current leading dressing on the market⁷

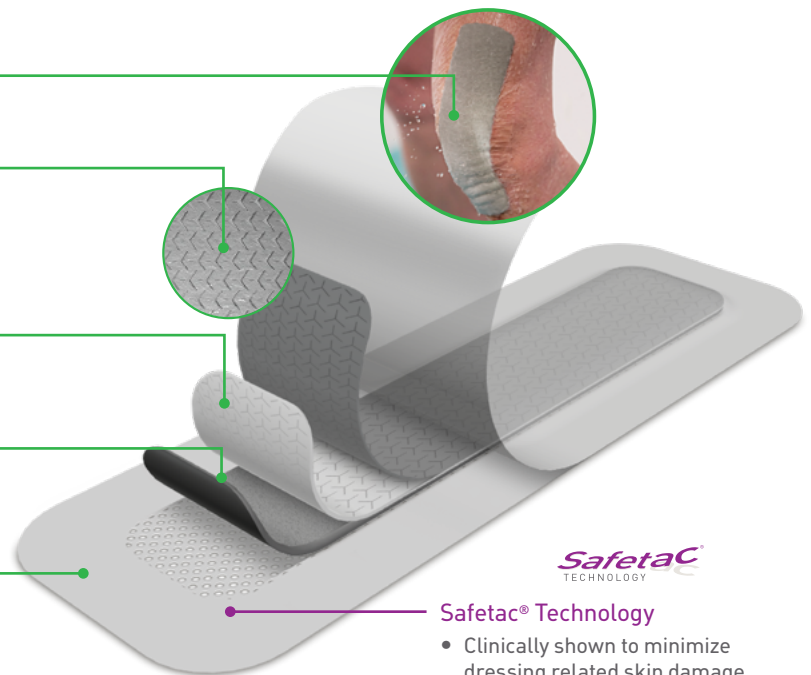
Rapid sustained release ionic silver

- **Antimicrobial activity** within 30 minutes with sustained effect up to 7 days³⁻⁵

Transparent border

- Allows inspection without removal

High FHC which may support longer wear times and low frequency as compared to conventional dressings^{1,3}



Safetac® Technology

- Clinically shown to minimize dressing related skin damage and reduce pain^{1,9}
- Interface adheres gently, maintaining skin integrity

How Mepilex® Border Post-Op Ag works

Mepilex Border Post-Op Ag is an all-in-one post-op dressing that effectively absorbs and retains exudate. The Safetac interface minimizes painful wound and peri-wound skin damage at dressing removal.^{1,2,9} The Safetac interface seals the wound edges, preventing exudate from leaking onto surrounding skin, minimizing risk of maceration.⁹ The flex-cut pad gives high flexibility and good conformability over joints, such as knees or hips, promoting patient mobilization.¹

Mepilex Border Post-Op Ag inactivates wound related pathogens within 30 minutes with sustained effect up to 7 days.³⁻⁵ By reducing the number of microorganisms, Mepilex Border Post-Op Ag may also reduce odor.

Indications for use

Mepilex Border Post-Op Ag dressing is indicated for the management of exuding wounds such as surgical and traumatic wounds. Mepilex Border Post-Op Ag can also be used under compression bandaging. Silver sulfate present in the dressing helps reduce microbial colonization in the dressing.

Benefits of Mepilex® Border Post-Op Ag

- Minimizes skin damage, including blistering^{1,3}
- Effective, sustained release of silver^{3,4,5}
- Very high absorption^{4,7} capacity leading to fewer dressing changes¹
- High flexibility giving very good comfort and conformability¹⁰
- Can be lifted and adjusted without losing its adherent properties
- Wide transparent borders for easy wound area inspection
- Bacteria and viral barrier†
- Shower proof

Mepilex® Border Post-Op Ag ordering information

Product Code	Size	Pcs/box	Pcs/case	HCPCS
498300	4" x 6" (10 x 15cm)	5	70	A6212
498400	4" x 8" (10 x 20cm)	5	25	A6212
498450	4" x 10" (10 x 25cm)	5	35	A6212
498600	4" x 12" (10 x 30cm)	5	25	A6213
498650	4" x 14" (10 x 35cm)	5	60	A6213

Additional post-op SKUs located in Ordering Information

References: 1. Bredow, J. et al. Randomized clinical trial to evaluate the performance of a flexible self-adherent absorbent dressing coated with a soft silicone layer compared to a standard wound dressing after hip, knee or spinal surgery in comparison to standard wound dressing. Poster presentation at 5th Congress of WUWHS, Florence, Italy 2016. 2. Zarghooni, K. et al. Is the use of modern versus conventional wound dressings warranted after primary knee and hip arthroplasty? Acta Orthopaedica Belgica 2015;81(4):768-775 3. Data on file. Laboratory test 20151024-005. 4. Data on file. Laboratory test 20151109-002 5. Data on file. Laboratory test 20151110-007 6. Feili, F et al. Fluid Handling Properties of Antimicrobial Post-Operative Wound Dressings. Data on file 7. Feili, F et al. Blood Absorption Capacity of Post-Operative Wound Dressings. Data on file. 8. Johansson C et al. Preventing post-operative blisters following hip and knee arthroplasty. Wounds International, 2012. 9. White, R. Evidence for atraumatic soft silicone wound dressing use. Wounds UK 2005; 1: 3, 104-109. 10. Van Overschelde P. et al. Effect of two modern dressing on patient outcome after primary hip and knee arthroplasty: a prospective, a randomised controlled study. Oral presentation at the WUWHS conference, Florence, 2016. 11. Data on file. Laboratory test 20151125-003. 12. Dykes, P.J., et al. Effects of adhesive dressings on the stratum corneum of skin. J Wound Care 2001; 10: 2, 7-10. 13. Lab report 2015 1125-003

† Microbes larger than 25 nm.

The self-adherent all-in-one antimicrobial bordered foam dressing

Safetac® Technology



Minimizes patient pain and trauma to the wound and surrounding skin at removal while reducing the risk of maceration.¹⁻³

Backing film

- Provides moisture, viral and bacteria barrier†
- Has high permeability to allow effective moisture vapor transfer

Non-woven layer

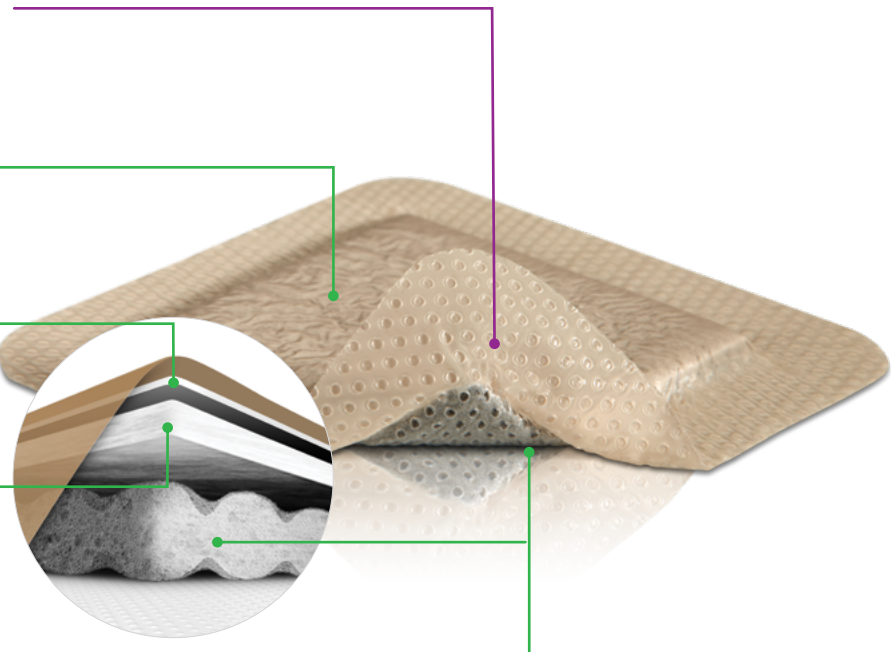
- Helps spread fluid for better vapor transmission
- Colored grey to distinguish the Ag version from Mepilex® Border Flex

The super absorbent layer

- Absorbs and stores exudate from the pad below it, keeping it safely away from the wound and surrounding skin.

Compressed silver foam

- Absorbs and spreads exudate
- Allows silver to be released



How Mepilex® Border Ag works

Mepilex Border Ag is an antimicrobial all-in-one foam dressing that effectively absorbs and retains exudate while maintaining a moist wound environment. The Safetac Technology layer seals the wound edges, which prevents the exudate from leaking onto the surrounding skin and minimizes the risk of maceration.³ The Safetac Technology layer allows the dressing to be changed without damaging the wound or surrounding skin or exposing the patient to additional pain.¹

Mepilex Border Ag starts to inactivate wound related pathogens within 30 minutes with sustained effect up to 7 days.⁴ By reducing the number of microorganisms, Mepilex Border Ag may also reduce odor.

Benefits of Mepilex® Border Ag

- Minimizes pain and trauma at dressing change¹
- Effective, sustained release of silver⁵
- Self-adherent - no secondary fixation required
- Promotes patient comfort during wear
- Low potential for skin irritation and allergy
- Barrier to outside moisture, viruses and bacteria[†]

Wear time

Mepilex Border Ag may be left in place for up to 7 days, depending on the patient, the condition of the wound and surrounding skin, or as indicated by accepted clinical practice.

Indications for use

Mepilex Border Ag dressing is indicated for the management of exuding wounds such as leg and foot ulcers, pressure injuries, traumatic and surgical wounds, superficial and partial thickness burns. Mepilex® Border Ag can also be used under compression bandaging. Silver sulfate present in the dressing helps reduce microbial colonization on the dressing.

Mepilex® Border Ag ordering information

Product Code	Size	Pcs/box	Pcs/case	HCPCS
395290	3" x 3" (7.5 x 7.5 cm)	5	70	A6212
395390	4" x 4" (10 x 10 cm)	5	50	A6212
395490	6" x 6" (15 x 15 cm)	5	50	A6213
395690	6" x 8" (15 x 20 cm)	5	45	A6213
395790	4" x 10" (10 x 25 cm)	5	35	A6212
395890	4" x 8" (10 x 20 cm)	5	35	A6212
395990	4" x 12" (10 x 30 cm)	5	25	A6213

Mepilex® Border Sacrum Ag

382090	7.2" x 7.2" (18 x 18 cm)	5	40	A6213
382490	9.2" x 9.2" (23 x 23 cm)	5	25	A6213

References: 1. White R. et al. Evidence for atraumatic soft silicone wound dressing use. Wounds UK, 2005. 2. Dykes PJ. The effect of adhesive dressing edges on cutaneous irritancy and skin barrier function. J wound Care 2007; 16(3):97-100. 3. Wiberg A.B. et al. Preventing maceration with a soft silicone dressing: in-vitro evaluations. Poster presented at the 3rd Congress of the WUWHS, Toronto, Canada, 2008. 4. Mölnlycke Mepilex® Ag Product Data Sheet Report PD-358735-10 5. Data on file

† Microbes larger than 25 nm.

The absorbent conformable foam dressing

Safetac® Technology

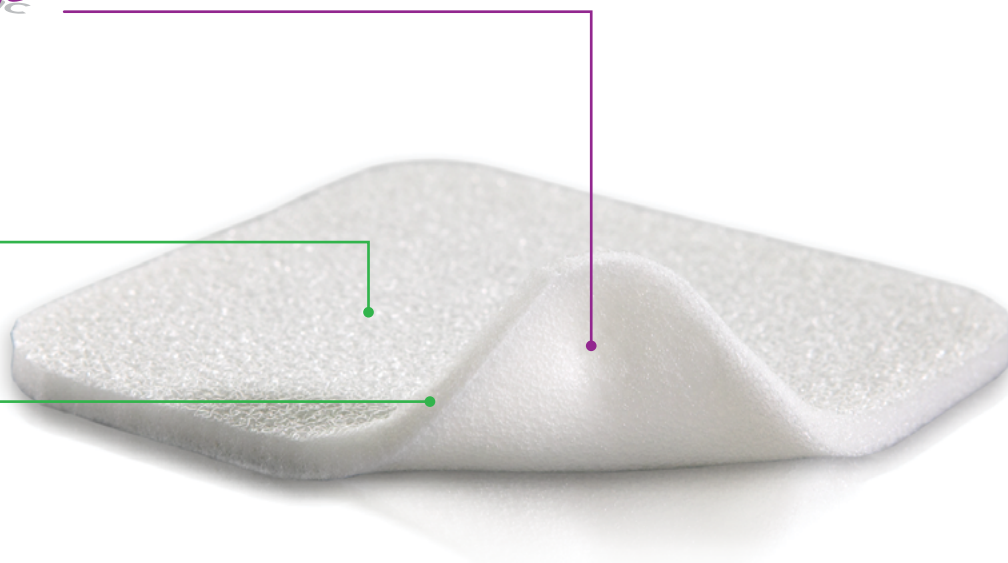
- Reduces pain and trauma during dressing change¹
- Does not adhere to the moist wound bed but to dry skin only
- Seals the wound margins and reduces risk of maceration²

Polyurethane backing film

- Breathable
- Moisture proof
- Bacteria and viral barrier[†]

Polyurethane foam pad

- Absorbs exudate
- Conformable
- May be used under compression



How Mepilex® works

Mepilex is a soft and highly conformable foam dressing that absorbs exudate and maintains a moist wound environment. The Safetac Technology layer seals the wound edges, preventing the exudate from leaking onto the surrounding skin, thus minimizing the risk of maceration.² The Safetac Technology layer allows the dressing to be changed without damaging the wound or surrounding skin or exposing the patient to additional pain.¹

Benefits of Mepilex®

- Minimizes pain and trauma at dressing changes¹
- Stays in place allowing easy application of compression or retention bandages
- Well suited for use under compression bandages
- May be cut to suit various wound shapes and difficult-to-dress locations
- Promotes patient comfort during wear
- May remain in place for several days depending on the condition of the wound
- May be adjusted without losing its adherent properties

Wear time

Mepilex may be left in place for several days depending on the condition of the wound and surrounding skin, or as indicated by accepted clinical practice.

Indications for use

Mepilex is intended for a wide range of exuding wounds such as leg and foot ulcers, pressure ulcers and traumatic wounds, e.g. skin tears and secondary healing wounds.

Mepilex can be used as a protection of compromised and/or fragile skin and may also be used as part of a prophylactic therapy to help prevent skin damage, e.g. pressure ulcers.

Mepilex® ordering information

Product Code	Size	Pcs/box	Pcs/case	HCPCS
294199	4" x 4" (10 x 10 cm)	5	70	A6209
294090	4" x 5" (10 x 12 cm)	5	50	A6210
294299	4" x 8" (10 x 20 cm)	5	45	A6210
294399	6" x 6" (15 x 15 cm)	5	25	A6210
294499	8" x 8" (20 x 20 cm)	5	20	A6211
294500	8" x 20" (20 x 50 cm)	2	12	A6211

Mepilex® Heel ordering information

Product Code	Size	Pcs/box	Pcs/case	HCPCS
288100	5" x 8" (13 x 20 cm)	5	25	A6210



References: 1. White R. et al. Evidence for atraumatic soft silicone wound dressing use. Wounds UK, 2005. 2. Wiberg A.B. et al. Preventing maceration with a soft silicone dressing: in-vitro evaluations. Poster presented at the 3rd Congress of the WUWHS, Toronto, Canada, 2008.

† Microbes larger than 25 nm.

The absorbent conformable antimicrobial foam dressing

Safetac® Technology



- Reduces pain and trauma during dressing change¹
- Does not adhere to the moist wound bed but to dry skin only
- Seals the wound margins and reduces risk of maceration²

Polyurethane foam pad

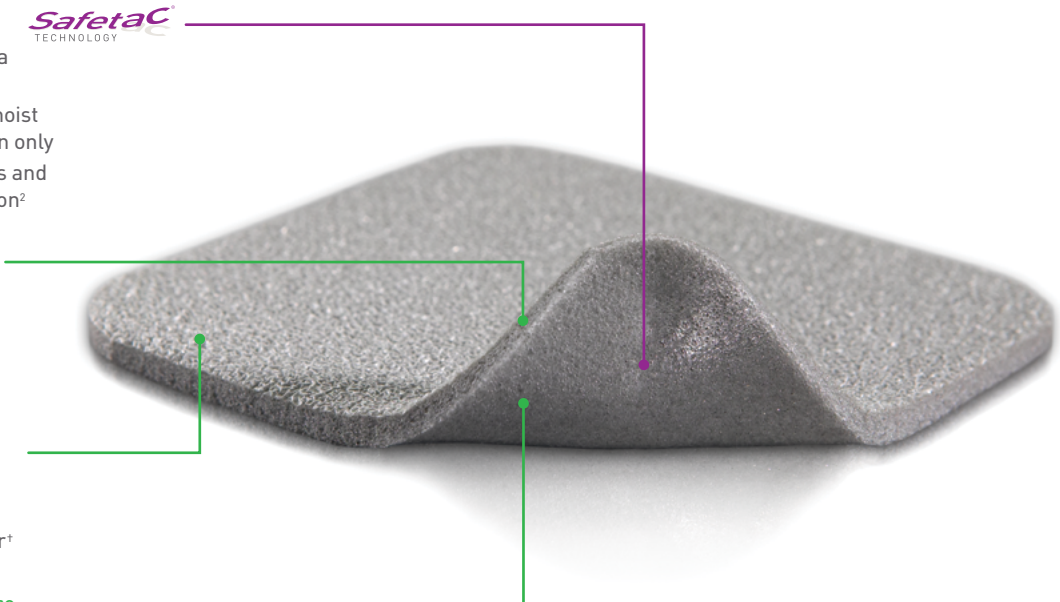
- Absorbs exudate
- Conformable
- May be used under compression

Polyurethane backing film

- Breathable
- Moisture proof
- Bacteria and viral barrier[†]

Powerful silver performance

- Antimicrobial activity within 30 minutes
- Sustained effect for up to 7 days³



How Mepilex® Ag works

Mepilex Ag is a soft and highly conformable antimicrobial foam dressing that absorbs exudate and maintains a moist wound environment. The Safetac Technology layer seals the wound edges, preventing the exudate from leaking onto the surrounding skin, thus minimizing the risk of maceration.³ The Safetac Technology layer allows the dressing to be changed without damaging the wound or surrounding skin or exposing the patient to additional pain.

Mepilex Ag starts to inactivate wound related pathogens within 30 minutes with sustained effect up to 7 days.³ By reducing the number of microorganisms, Mepilex® Ag may also reduce odor.

Benefits of Mepilex® Ag

- Minimizes pain and trauma at dressing changes¹
- Stays in place allowing easy application of compression or retention bandages
- Well suited for use under compression bandages
- May be cut to suit various wound shapes and difficult-to-dress locations
- Promotes patient comfort during wear
- May remain in place for several days depending on the condition of the wound
- May be adjusted without losing its adherent properties
- Low potential for skin irritation and allergy

Wear time

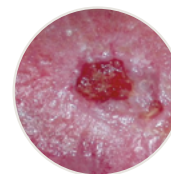
Mepilex® Ag may be left in place for up to 7 days depending on the condition of the wound and surrounding skin, or as indicated by accepted clinical practice.

Indications for use:

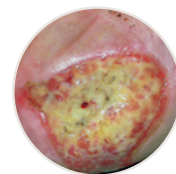
Mepilex Ag Dressing is indicated for the management of low to moderately exuding wounds such as leg and foot ulcers, pressure injuries and partial thickness burns. Silver sulphate present in the dressing helps reduce microbial colonization on the dressing.



Partial thickness burn



Infected leg ulcer



Pressure injury

Mepilex® Ag ordering information

Product Code	Size	Pcs/box	Pcs/case	HCPCS
287100	4" x 4" (10 x 10 cm)	5	70	A6209
287090	4" x 5" (10 x 12 cm)	5	70	A6210
287200	4" x 8" (10 x 20 cm)	5	45	A6210
287300	6" x 6" (15 x 15 cm)	5	25	A6210
287400	8" x 8" (20 x 20 cm)	5	20	A6211
287500	8" x 20" (20 x 50 cm)	2	10	A6211

References: 1. White R. et al. Evidence for atraumatic soft silicone wound dressing use. Wounds UK, 2005. 2. Wiberg A.B. et al. Preventing maceration with a soft silicone dressing: in-vitro evaluations. Poster presented at the 3rd Congress of the WUWHs, Toronto, Canada, 2008. 3. Mölnlycke® Mepilex® AG Product Data Sheet Report PD-358735-10

† Microbes larger than 25 nm.

Mepilex® XT

The absorbent conformable foam dressing that handles both low-and high-viscosity fluid

Safetac® Technology

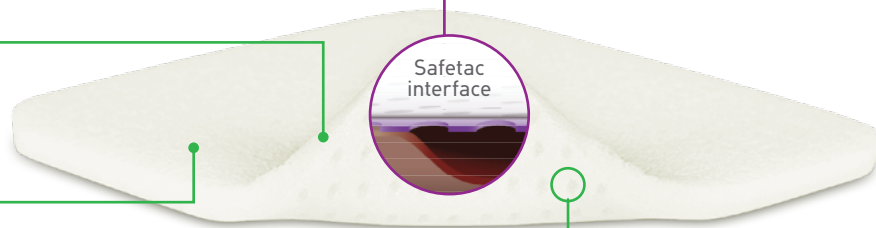
- Reduces pain and trauma during dressing change¹
- Does not adhere to the moist wound bed but to dry skin only
- Seals the wound margins and reduces risk of maceration²

Polyurethane foam pad

- Enhanced exudate management capability
- Conformable and flexible foam

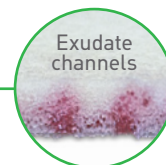
Polyurethane backing film

- Breathable
- Water proof
- Barrier to virus and bacteria†



Exudate Channels

- Handles both low and high viscosity fluid^{3,4}
- Ultra-absorbent foam with integrated channels absorbs exudate, drawing it away from the wound bed, then spreading and absorbing it across the foam pad



How Mepilex® XT works

Mepilex XT is a soft and conformable foam dressing with integrated channels, designed to transfer exudate rapidly⁴⁻⁶ into the absorbent foam pad.

Safetac technology seals the wound edges, preventing exudate from leaking onto the surrounding skin, thus minimizing the risk of maceration.² Safetac technology also allows the dressing to be changed with minimized risk of damaging the wound or surrounding skin or exposing the patient to additional pain.^{1,2}

Benefits of Mepilex® XT

- Absorbs both low and high viscosity fluid^{3,4}
- Can be used on all exuding wound healing stages⁵
- Minimizes pain and skin damage at dressing changes¹
- Can be used under compression bandages
- Requires fewer dressing changes compared to other foam dressings⁵
- Can be cut to suit various wound shapes and difficult-to-dress locations

Indications for use

Mepilex XT is a dressing designed for a wide range of exuding acute and chronic wounds in all healing stages such as leg and foot ulcers, pressure ulcers and traumatic wounds, e.g. skin tears and secondary healing wounds.

Mepilex® XT ordering information

Product Code	Size	Pcs/box	Pcs/case	HCPCS
211100	4" x 4" (10 x 10 cm)	5	70	A6209
211200	4" x 8" (10 x 20 cm)	5	45	A6210
211300	6" x 6" (15 x 15 cm)	5	25	A6210
211400	8" x 8" (20 x 20 cm)	5	20	A6210

References: 1. White R. et al. Evidence for atraumatic soft silicone wound dressing use. Wounds UK, 2005. 2. Wiberg A.B. et al. Preventing maceration with a soft silicone dressing: in-vitro evaluations. Poster presented at the 3rd Congress of the WUWHS, Toronto, Canada, 2008. 3. Mölnlycke® Health Care data on file report 20130104-004. 4. Mölnlycke® Health Care data on file. Mepilex® XT Fluid Handling capacity report 5. Lantin, A., Diegel, C., Scheske, J., Schmitt, C., Bronner, A., Burkhardt, S. Use of a new foam dressing with softsilicone in German specialist wound care centres. E-poster presentation at European Wound Management Association conference, London, UK, 2015. 6. Mölnlycke Health Care data on file report MXTCost1115

† Microbes larger than 25 nm.

Mepilex® Lite

The absorbent conformable thin foam dressing

Safetac® Technology



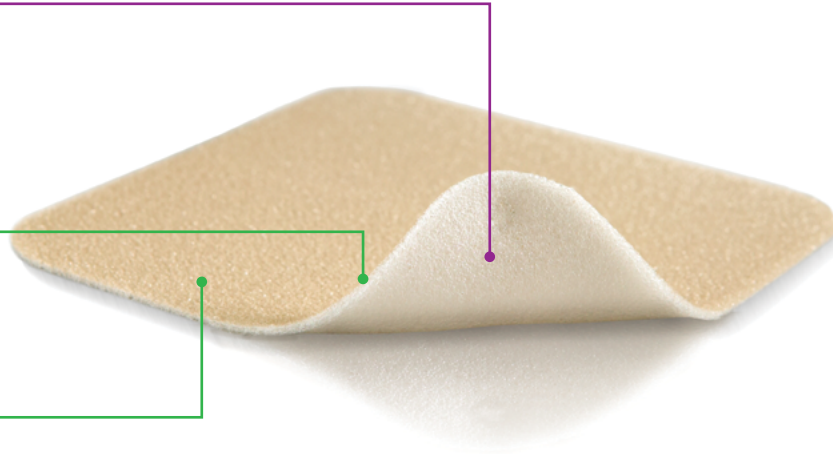
- Reduces pain and trauma during dressing change¹
- Does not adhere to the moist wound bed but to dry skin only
- Seals the wound margins and reduces risk of maceration²

Polyurethane foam pad

- Absorbs exudate
- Conformable
- May be used under compression

Polyurethane backing film

- Moisture resistant
- Bacteria and viral barrier†



How Mepilex® Lite works

Mepilex Lite is a highly conformable dressing that absorbs exudate and maintains a moist wound environment. The Safetac technology layer seals around the wound edges, preventing the exudate from leaking onto the surrounding skin, thus minimizing the risk of maceration.² The Safetac Technology layer also allows for atraumatic dressing changes.¹ Mepilex Lite may be cut to suit various wound shapes and locations.

Benefits of Mepilex® Lite

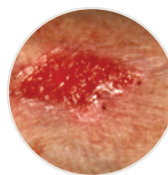
- Atraumatic to the wound and surrounding skin on removal¹
- Promotes patient comfort during wear and minimizes pain upon removal¹
- Minimizes the risk of maceration²
- Conforms well to body contours
- Thin and comfortable to wear
- Easy to handle; may be cut for customization
- Maintains a moist wound environment

Wear time

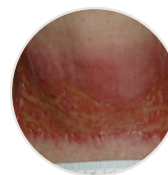
Mepilex Lite may be left in place for several days depending on the condition of the wound and surrounding skin, or as indicated by accepted clinical practice.

Indications for use

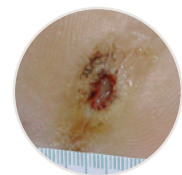
Mepilex® Lite is designed for the management of a wide range of non to low exuding wounds, such as leg and foot ulcers, pressure ulcers, partial thickness burns, radiation skin reactions and Epidermolysis Bullosa. Mepilex Lite can also be used as protection of compromised and/or fragile skin.



Non to low exuding wound



Radiation skin reaction



Foot ulcer

Mepilex® Lite ordering information

Product Code	Size	Pcs/box	Pcs/case	HCPCS
284599	8" x 20" (20 x 50 cm)	4	24	—
284090	2.4" x 3.4" (6 x 8.5 cm)	5	70	A6209
284190	4" x 4" (10 x 10 cm)	5	50	A6209
284390	6" x 6" (15 x 15 cm)	5	50	A6210
284123	5" x 5" (12.5 x 12.5 cm)	5	50	A6210

References: 1. White R. et al. Evidence for atraumatic soft silicone wound dressing use. Wounds UK, 2005. 2. Wiberg A.B. et al. Preventing maceration with a soft silicone dressing: in-vitro evaluations. Poster presented at the 3rd Congress of the WUWHS, Toronto, Canada, 2008.

† Microbes larger than 25 nm.

Mepilex® Transfer

The thin and conformable exudate transfer foam dressing

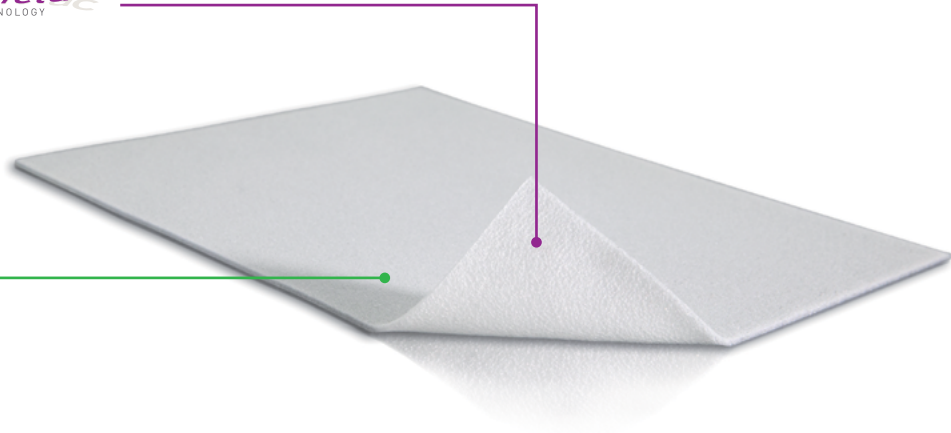
Safetac® Technology

- Reduces pain and trauma during dressing change¹
- Does not adhere to the moist wound bed but to dry skin only
- Seals the wound margins and reduces risk of maceration²



Thin polyurethane foam layer

- Transfers the exudate away from the wound
- Conforms well on difficult-to-dress wounds
- Ideal for large, exuding wounds



How Mepilex® Transfer works

Mepilex Transfer is thin and conformable for even the most difficult to dress wounds. The Safetac Technology layer allows for direct contact to the wound and the surrounding skin, including uneven surfaces. As the Safetac Technology layer seals around the wound, the foam structure of Mepilex Transfer allows the exudate to move vertically into a secondary absorbent pad. Mepilex® Transfer maintains a moist wound environment in combination with an appropriate secondary dressing.

Benefits of Mepilex® Transfer

- Transfers exudate away from the wound
- Atraumatic to the wound and surrounding skin on removal¹
- Conforms well to body contours
- May be cut to shape
- Minimizes the risk of maceration²
- Promotes patient comfort during wear and minimizes pain upon removal¹
- Suitable for large and/or fragile wounds

Wear time

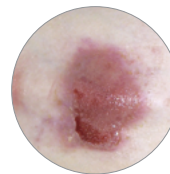
Mepilex Transfer may be left in place for several days depending on the condition of the wound and surrounding skin, or as indicated by accepted clinical practice.

Indications for use

Mepilex Transfer is designed for a wide range of exuding and difficult-to-dress wounds. Mepilex Transfer can also be used as a protective layer on non-exuding wounds and/or large areas of fragile skin. Mepilex Transfer can be used under compression.



Radiation-induced dermatitis



Epidermolysis Bullosa (EB)



Fungating malignant wound

Mepilex® Transfer ordering information

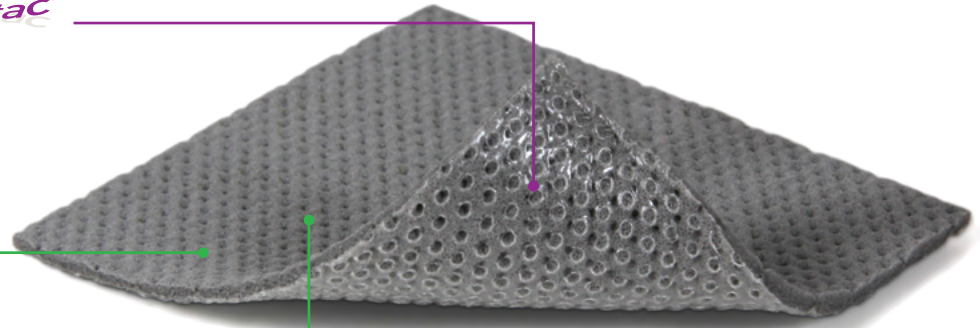
Product Code	Size	Pcs/box	Pcs/case	HCPCS
294899	6" x 8" (15 x 20 cm)	5	40	A6210
294599	8" x 20" (20 x 50 cm)	4	24	A6211

References: 1. White R. et al. Evidence for atraumatic soft silicone wound dressing use. Wounds UK, 2005. 2. Wiberg A.B. et al. Preventing maceration with a soft silicone dressing: in-vitro evaluations. Poster presented at the 3rd Congress of the WUWHS, Toronto, Canada, 2008.

The thin and conformable antimicrobial exudate transfer dressing

Safetac® Technology

- Reduces pain and trauma during dressing change¹
- Does not adhere to the moist wound bed but to dry skin only
- Seals the wound margins and reduces risk of maceration²
- The absence of a backing film allows exudate to transfer into a secondary dressing that can be changed as needed
- The antimicrobial silver impregnated, polyurethane foam transfers exudate into a secondary dressing



How Mepilex® Transfer Ag works

Mepilex Transfer Ag is a thin and conformable, antimicrobial wound contact layer. The Safetac Technology layer allows direct contact to the wound and the surrounding skin, including uneven surfaces. As the Safetac Technology layer seals around the wound, the foam structure of Mepilex Transfer Ag allows exudate to move vertically into a secondary absorbent dressing. Mepilex Transfer Ag maintains a moist wound environment in combination with an appropriate secondary dressing.

Mepilex Transfer Ag inactivates wound related pathogens within 30 minutes³ with a sustained effect up to 14 days.⁴ By reducing the number of microorganisms, Mepilex Transfer Ag may also reduce odor.

Benefits of Mepilex® Transfer Ag

- Minimizes pain and trauma at dressing change^{1,2}
- Effective, sustained release of silver provides rapid antimicrobial effect within 30 minutes³ that is sustained for up to 14 days⁴
- Promotes patient comfort during wear
- Conforms well to body contours
- May be cut to desired shapes
- Effective under compression bandages

Wear time

Mepilex Transfer Ag may be left in place for up to 14 days depending on the patient, condition of the wound and surrounding skin, or as indicated by accepted clinical practice.

Indications for use

Mepilex Transfer Ag is indicated for the management of a wide range of exuding wounds such as leg and foot ulcers, pressure ulcers, partial thickness burns, traumatic and surgical wounds. Mepilex Transfer Ag can also be used under compression bandaging.

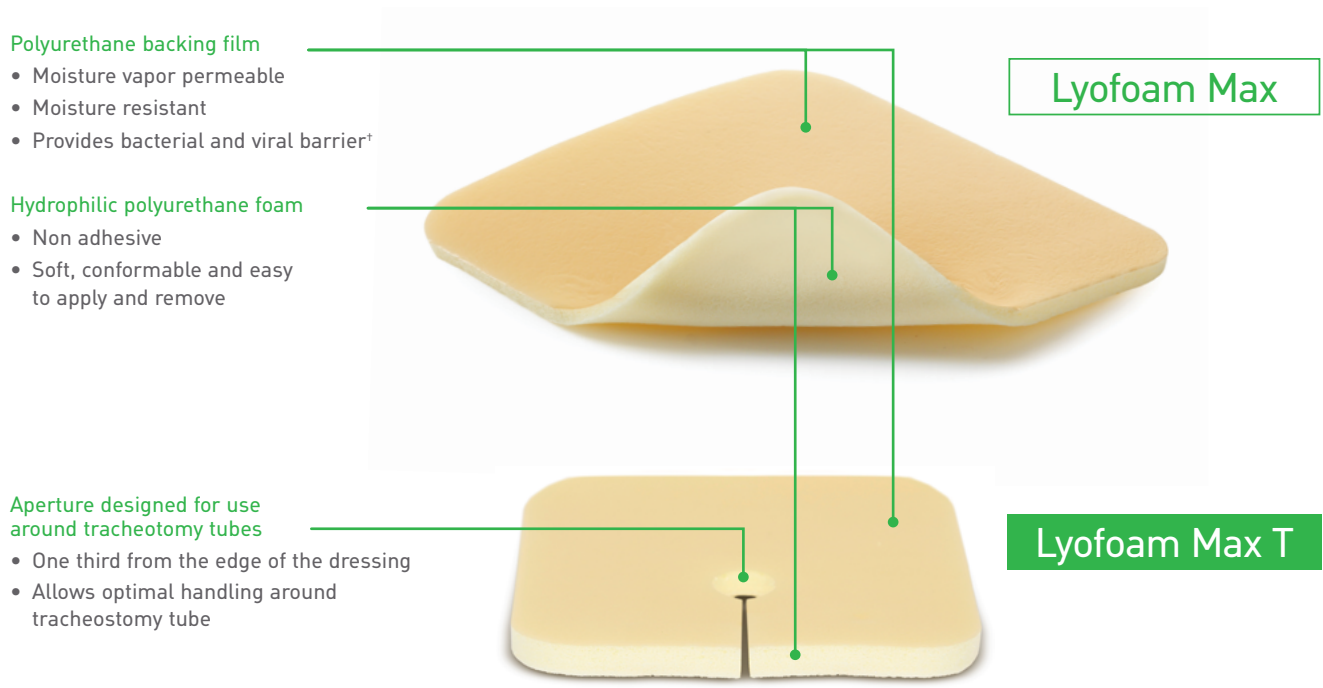
Mepilex® Transfer Ag ordering information

Product Code	Size	Pcs/box	Pcs/case	HCPCS
394190	4" x 5" (10 x 12.5 cm)	5	50	A6210
394890	6" x 8" (15 x 20 cm)	10	50	A6210
394590	8" x 20" (20 x 50 cm)	2	12	A6211

References: 1. White R. A multinational survey of the assessment of pain when removing dressings. Wounds UK, 2008. 2. Dykes PJ et al. Effects of adhesive dressings on the stratum corneum of the skin. J Wound Care 2001; 10(2):7-10. 3. Mölnlycke® Mepilex® AG Product Data Sheet Report PD-358735-10 4. Mölnlycke® testing Report Antimicrobial effect of Mepilex® Transfer Ag and competitors against wound pathogens PD-455823. 2016

Lyofoam® Max / Lyofoam® Max T

The highly absorbent polyurethane foam dressing



- Polyurethane backing film**
- Moisture vapor permeable
 - Moisture resistant
 - Provides bacterial and viral barrier†

- Hydrophilic polyurethane foam**
- Non adhesive
 - Soft, conformable and easy to apply and remove

- Aperture designed for use around tracheostomy tubes**
- One third from the edge of the dressing
 - Allows optimal handling around tracheostomy tube

How Lyofoam® Max / Max T works

Lyofoam Max T is a soft tracheostomy dressing that absorbs exudate/secretion and provides protection for the skin around the tracheostomy tube.

Benefits of Lyofoam® Max / Max T

- Moisture resistant backing film acts as a barrier to bacteria and viral penetration†
- Protects and cushions the skin around the tracheostomy tube
- Easy to apply and remove
- Soft and conformable
- Provides comfort to patients

Wear time

Lyofoam Max may be left in place for several days depending on the nature and condition of the wound and the level of exudate.

Lyofoam Max T should be changed according to clinical practice or when saturated.

Indications for use

Lyofoam Max is designed for the management of moderate to highly exuding wounds.

Lyofoam Max T is designed for use around tracheostomy tubes to provide absorption and protection.

Lyofoam® Max ordering information

Product Code	Size	Pcs/box	HCPCS
603200	3" x 3.4" (7.5 x 8.5 cm)	10	A6209
603201	4" x 4" (10 x 10 cm)	10	A6209
603203	4" x 8" (10 x 20 cm)	10	A6210
603204	6" x 6" (15 x 15 cm)	10	A6210
603205	6" x 8" (15 x 15 cm)	10	A6210
603206	8" x 8" (20 x 20 cm)	10	A6211

Lyofoam® Max T ordering information

Product Code	Size	Pcs/box	HCPCS
603207	3.6" x 3.6" (9 x 9 cm)	10	—

† Microbes larger than 25 nm.

Mepitel® One

The highly transparent wound contact layer (single-sided)



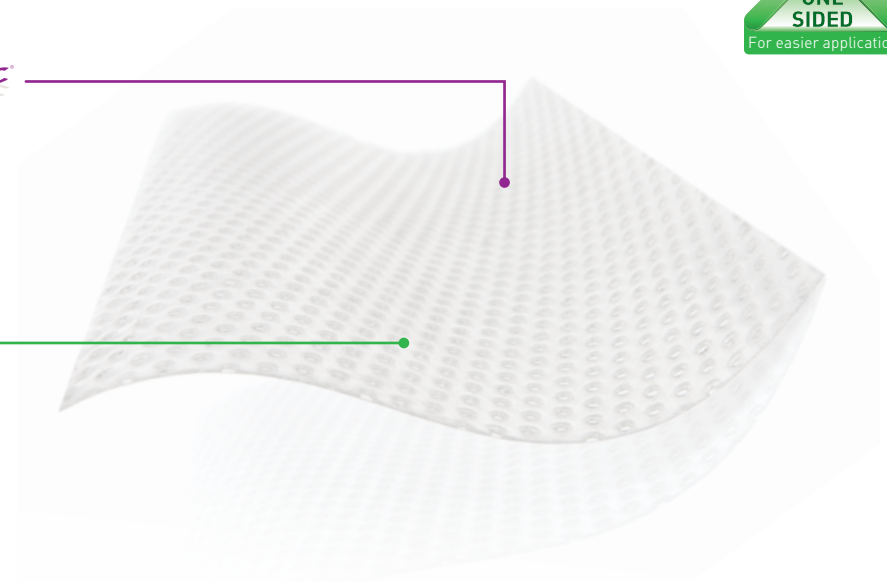
Safetac® Technology



- Reduces pain and trauma during dressing change¹
- Does not adhere to the moist wound bed but to dry skin only
- Seals the wound margins and reduces risk of maceration²

Open mesh structure

- Allows for transfer of exudate and application of topical treatment
- High transparency



How Mepitel® One works

Mepitel One may be left in place for up to 14 days, depending on the condition of the wound, which reduces the necessity for frequent primary dressing changes. The porous structure of Mepitel One allows exudate to pass into an outer absorbent dressing. The Safetac Technology layer prevents the outer dressing from sticking to the wound and allows for atraumatic dressing changes.¹ The Safetac Technology layer also seals around the wound edges, preventing the exudate from leaking onto the surrounding skin, thus minimizing the risk of maceration.²

Benefits of Mepitel® One

- Minimizes pain and trauma at dressing changes¹
- Safetac Technology layer on wound contact side only (one sided) for easy handling and application
- May remain in place for up to 14 days which allows cost effective and undisturbed wound healing
- Enables less frequent dressing changes
- Minimizes the risk of maceration²
- Leaves no residue and does not dry out
- Transparent for easy wound inspection during application and wear
- Conforms well to body contours, promoting patient comfort during wear
- Stays in place

Wear time

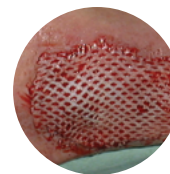
Mepitel One may be left in place for up to 14 days depending on the condition of the wound and surrounding skin, or as indicated by accepted clinical practice (exudate should pass freely through the dressing and the holes should not be blocked). If saturated, the secondary absorbent dressing should be changed with the Mepitel One left in place.

Indications for use

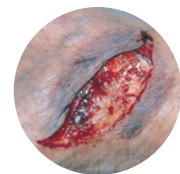
Mepitel One is a wound contact layer designed for the management of a wide range of exuding wounds such as painful wounds, skin tears, skin abrasions, surgical incisions, partial thickness burns, traumatic wounds, blistering, lacerations, partial and full thickness grafts, radiated skin, leg and foot ulcers. It can also be used as a protective layer on non-exuding wounds and on areas with fragile skin.



Burns



Skin grafts



Skin tears

Mepitel® One ordering information

Product Code	Size	Pcs/box	Pcs/case	HCPCS
289100	2" x 3" (5 x 7.5 cm)	10	70	A6206
289300	3" x 4" (7.5 x 10 cm)	10	40	A6206
289500	4" x 7" (10 x 18 cm)	10	70	A6207
289700	6.8" x 10" (17 x 25 cm)	5	40	A6208
289750	10.8" x 20" (27.5 x 50 cm)	2	14	A6208

References: 1. White R. et al. Evidence for atraumatic soft silicone wound dressing use. Wounds UK, 2005. 2. Wiberg A.B. et al. Preventing maceration with a soft silicone dressing: in-vitro evaluations. Poster presented at the 3rd Congress of the WUWHS, Toronto, Canada, 2008.

The transparent wound contact layer (double-sided)

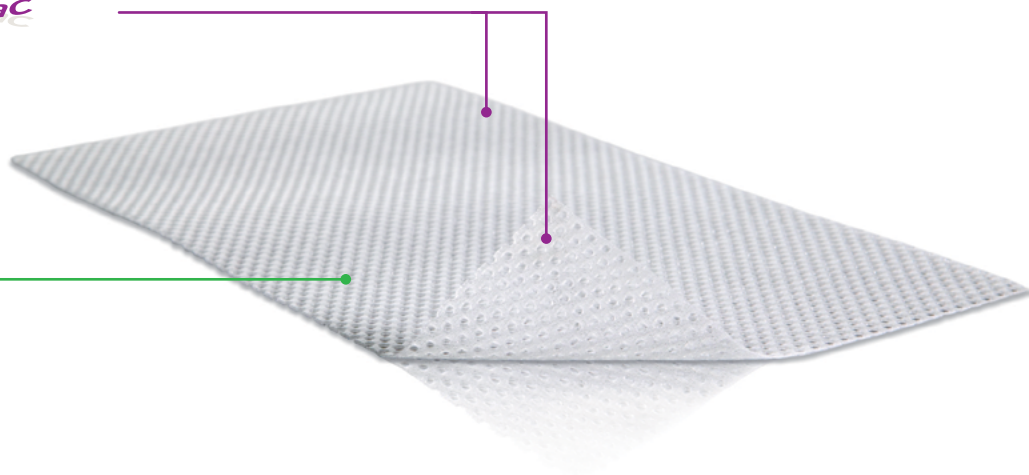
Safetac® Technology



- Reduces pain and trauma during dressing change¹
- Does not adhere to the moist wound bed but to dry skin only
- Seals the wound margins and reduces risk of maceration²

Open mesh structure

- Allows transfer of exudate and application of topical treatment
- Transparent
- Allows topical applications to pass through



How Mepitel® works

Mepitel may be left in place for up to 14 days, depending on the condition of the wound, which reduces the necessity for frequent primary dressing changes. The porous structure of Mepitel allows exudate to pass into an outer absorbent dressing. The Safetac Technology layer prevents the outer dressing from sticking to the wound and allows for atraumatic dressing changes.¹ The Safetac Technology layer also seals around the wound edges, preventing the exudate from leaking onto the surrounding skin, thus minimizing the risk of maceration.²

Benefits of Mepitel®

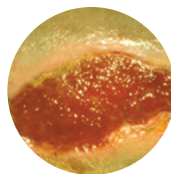
- Minimizes trauma and pain during dressing changes
- Prevents damage to newly formed delicate tissue upon removal¹
- May remain in place for up to 14 days for cost effective undisturbed wound healing
- Enables less frequent dressing changes
- Minimizes the risk of maceration²
- Does not adhere to moist wound beds but to dry tissue only
- Transparent for easy wound inspection during application and during wear
- Conforms well to body contours, promoting patient comfort during wear

Wear time

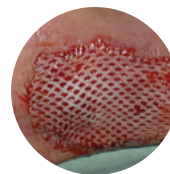
Mepitel may be left in place for up to 14 days depending on the condition of the wound and surrounding skin, or as indicated by accepted clinical practice (exudate should pass freely through the dressing and the pores should not be blocked). If saturated, the secondary absorbent dressing pad should be changed with the Mepitel left in place.

Indications for use

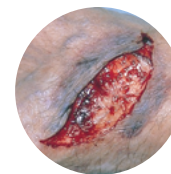
Mepitel is a meshed non-adherent wound contact layer allowing passage of exudate and providing fixation and protection of tissues. Mepitel is designed for a wide range of exuding wounds such as skin tears, skin abrasions, sutured wounds, partial thickness burns, lacerations, partial and full thickness grafts, diabetic foot ulcers, venous and arterial leg ulcers. Mepitel can also be used as a protective layer on non-exuding wounds, blisters, fragile skin and exposed fragile tissues.



Primary wound protection



Skin grafts



Skin tears

Mepitel® ordering information

Product Code	Size	Pcs/box	Pcs/case	HCPCS
290599	2" x 3" (5 x 7.5 cm)	10	50	A6206
290799	3" x 4" (7.5 x 10 cm)	10	40	A6206
291099	4" x 7" (10 x 18 cm)	10	70	A6207
292005	8" x 12" (20 x 30 cm)	5	30	A6208

References: 1. White R. et al. Evidence for atraumatic soft silicone wound dressing use. Wounds UK, 2005. 2. Wiberg A.B. et al. Preventing maceration with a soft silicone dressing: in-vitro evaluations. Poster presented at the 3rd Congress of the WUWHS, Toronto, Canada, 2008.

The highly conformable antimicrobial wound contact layer

Safetac® Technology

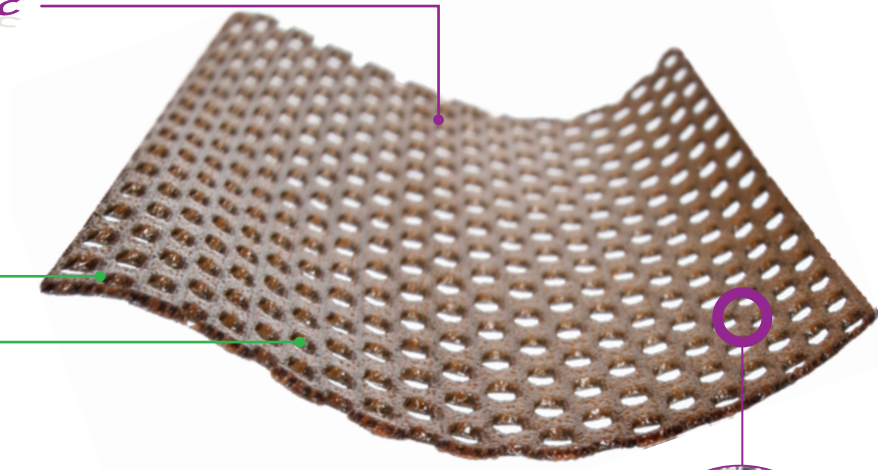


- Reduces pain and trauma during dressing change¹
- Does not adhere to the moist wound bed but to dry skin only
- Seals the wound margins and reduces risk of maceration²

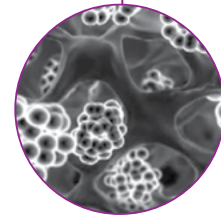
Soft and conformable

Open mesh structure

- Allows transfer of exudate



Our technologically advanced process fuses silver sulphate with Safetac Technology's unique base without losing the gentle effectiveness of Safetac Technology and the antimicrobial properties of silver.



Benefits of Mepitel® Ag

- Reduces pain and trauma at dressings changes.¹
- Prevents damage to newly formed delicate tissue upon removal¹
- Stays securely in place without slippage
- Can be left in place, while a secondary layer is changed as frequently as necessary.
- Inactivates a broad range of wound-related pathogens for up to 8 days³
- Antimicrobial effect – even with a secondary layer⁴

Wear time

Mepitel Ag may be left in place for up to 8 days depending on the patient, condition of the wound and surrounding skin, or as indicated by accepted clinical practice (exudates should pass freely through the dressing and the holes should not be blocked). If saturated, the secondary absorbent dressing could be changed with the Mepitel Ag left in place.

Indications for use

Mepitel Ag is intended for the management of a wide range of exuding wounds such as skin tears, skin abrasions, sutured/ surgical wounds, partial thickness burns, partial and full thickness grafts, lacerations, diabetic ulcers, venous ulcers, and arterial ulcers. Silver sulphate is added to the dressing as a preservative to inhibit or reduce microbial growth on the dressing.

Mepitel® Ag ordering information

Product Code	Size	Pcs/box	Pcs/case	HCPCS
390590	2" x 3" (5 x 7.5 cm)	10	50	A6206
390790	3" x 4" (7.5 x 10 cm)	10	40	A6206
390090	4" x 5" (10 x 12 cm)	10	60	A6207
391090	4" x 7" (10 x 18 cm)	10	70	A6207
392090	8" x 12" (20 x 30 cm)	5	30	A6208
392059	8" x 20" (20 x 50 cm)	2	12	A6208

References: 1. White R. et al. Evidence for atraumatic soft silicone wound dressing use. Wounds UK, 2005. 2. Wiberg A.B. et al. Preventing maceration with a soft silicone dressing: in-vitro evaluations. Poster presented at the 3rd Congress of the WUWHS, Toronto, Canada, 2008. 3. Savas & Hamberg Antimicrobial Effect of a New Silver-Containing, Soft Silicone Wound Contact Layer against Common Wound Pathogens in-vitro. Presented at SAWC Spring 2015 4. Savas & Hamberg In-vitro Evaluation of the Antimicrobial effect of a new silver-containing wound contact layer in Combination with Secondary Dressings. Presented at SAWC Spring 2015

The gelling fiber dressing

High tensile strength³

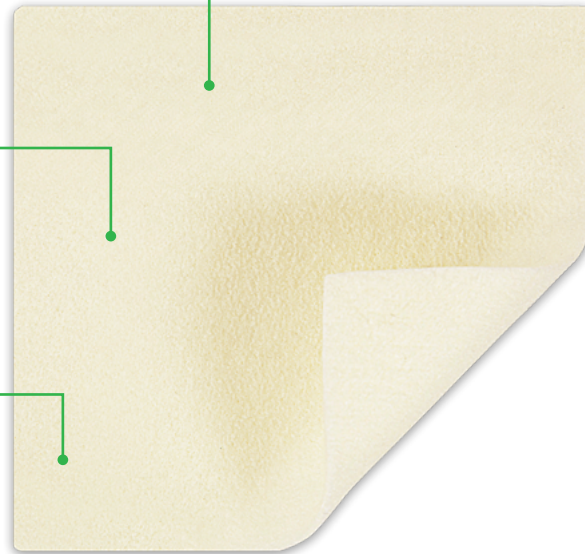
- Enables one-piece dressing removal²
- Reduces the risk of residue and fibers being left in the wound²

High retention capacity¹

- Absorbs and retains exudate, bacteria and blood^{2,4,5}
- Reduces the risk of leakage onto surrounding skin²
- Reduces the risk of maceration²

Hydrolock® Technology

- Highly absorbent, even under compression⁷
- Locks in fluid, minimizing risk of leakage and maceration¹
- May be left in place for up to 7 days



How Exufiber® works

Exufiber is a sterile, nonwoven dressing made from highly absorbent polyvinyl alcohol fibers. In contact with wound exudate, Exufiber transforms into a gel that facilitates moist wound healing and ease of removal during dressing changes². Exufiber is available both as a sheet and ribbon.

Benefits of Exufiber®

- High tensile strength to enable one-piece dressing removal^{2,3}
- High retention capacity reduces the risk of leakage and maceration^{1,2}
- Absorbs and retains exudate, blood and bacteria^{2,4,5}
- Highly absorbent, even under compression therapy⁷
- Efficiently transfers exudate
- Optimizes wound healing by reducing the risk of exudate pooling in the wound bed. ^{2,8,9}
- May be left in place for up to 7 days

Wear time

Exufiber can be left in place for up to 7 days depending on wound condition or as indicated by clinical practice.

Indications for use

Exufiber is intended to be used on a wide range of exuding wounds:

- Leg and foot ulcers
- Pressure ulcers
- Partial thickness burns
- Surgical wounds
- Donor sites
- Malignant wounds

Exufiber® ordering information

Product Code	Size	Pcs/box	Pcs/case	HCPCS
709900	2" x 2" (5 x 5 cm)	10	40	A6196
709901	4" x 4" (10 x 10 cm)	10	80	A6197
709902	4" x 4.8" (10 x 12 cm)	10	60	A6197
709903	6" x 6" (15 x 15 cm)	10	60	A6197
709909	0.8" x 17.7" (2 x 45 cm)	5	25	A6196

Reference: 1. Data-on-file report 20140806-001. 2. Chadwick P., McCardle J. Open, non-comparative, multi-centre post clinical study of the performance and safety of the gelling fiber wound dressing on diabetic foot injury. Journal of Wound Care 2016, 25(4): 290-300. 3. Mölnlycke® Health Care Laboratory Report 20140820-003 4. Data-on-file report 20140812-013-V1. 5. Mölnlycke® Health Care Laboratory Report PD-474698 6. Exufiber instructions for use 7. Mölnlycke® Health Care Laboratory Report 20140805-011 8. Smet, S., Beele, H., Saine, L., Suys, E., Henrickx, B. Open, non-comparative, multi-centre post market clinical follow-up investigation to evaluate performance and safety on pressure ulcers when using a gelling fibre dressing as intended. Poster Presentation at European Pressure Ulcer Advisory Panel Conference, 2015, Ghent, Belgium 9. Davies, P., McCarty, S., An in-use product evaluation of a gelling fibre dressing in wound management. E-poster presentation at Wounds UK Conference, 2017, Harrogate, United Kingdom. AW62

The antimicrobial gelling fiber dressing

Sustained antimicrobial effect

- Kills a broad range of pathogens (in vitro)³
- May reduce odor
- Maintains antimicrobial efficacy for up to 7 days (in vitro)³

High tensile strength²

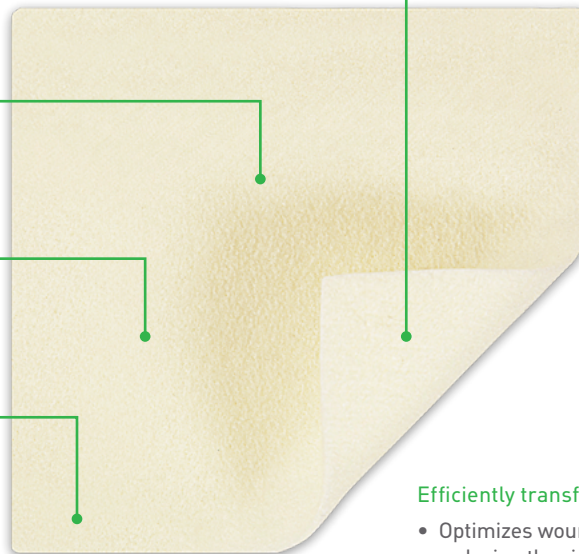
- Enables one-piece dressing removal
- Reduces the risk of residue and fibers being left in the wound

High retention capacity¹

- Absorbs and retains thick exudate and blood^{4,5}
- Reduces the risk of leakage onto surrounding skin¹
- Reduces the risk of maceration¹

Hydrolock® Technology

- Highly absorbent, even under compression⁶
- Locks in fluid, reducing risk of leakage and maceration¹
- May be left in place for up to 7 days



Efficiently transfers exudate

- Optimizes wound healing by reducing the risk of exudate pooling in the wound bed. ^{2,8,9}

How Exufiber® Ag+ works

In contact with wound exudate, Exufiber Ag+ transforms into a gel that facilitates moist wound healing and ease of removal during dressing change.² Exufiber Ag+ contains silver sulphate that is evenly distributed throughout the dressing. A rapid and sustained antimicrobial effect is initiated via contact with wound fluid.³

Benefits of Exufiber® Ag+

- High wet tensile strength to enable dressing removal in one piece²
- High retention capacity to reduce the risk of leakage and maceration¹
- Absorbs and retains thick exudate and blood^{4,5}
- Kills a broad range of pathogens including Vancomycin-resistant Enterococci (VRE) and MRSA (in vitro)³
- Highly absorbent, even under compression therapy⁶
- Efficiently transfers exudate
- Optimizes wound healing by reducing the risk of exudate pooling in the wound bed. ^{2,8,9}
- May be left in place for up to 7 days

Wear time

Exufiber Ag+ can be left in place for up to 7 days depending on wound condition or as indicated by clinical practice.

Indications for use

Exufiber Ag+ is intended to be used on the following medium to high exuding wounds: **Leg ulcers** (venous stasis ulcers, arterial ulcers and ulcers of mixed etiology) and **diabetic foot ulcers, Pressure ulcers** (partial and full thickness), **Partial thickness burns** (second degree), **Donor sites** and other wounds that are prone to bleeding, such as debrided wounds (mechanically or surgically), **Traumatic wounds, Surgical wounds** that heal by primary intention, such as dermatological and surgical incisions (e.g. orthopaedic and vascular), and surgical wounds left to heal by secondary intention, such as dehisced surgical incisions, **Oncology wounds** with exudate, such as fungoides-cutaneous tumours, fungating carcinoma, cutaneous metastasis, Kaposi's sarcoma and angiosarcoma. Exufiber Ag+ may be used for management of wounds as an effective barrier to bacterial penetration of the dressing, as this may help to reduce the risk of infection.

Exufiber® Ag+ ordering information

Product Code	Size	Pcs/box	Pcs/case	HCPCS
603421	2" x 2" (5 x 5 cm)	10	40	A6196
603425	4" x 4" (10 x 10 cm)	10	60	A6197
603422	4" x 4.8" (10 x 12 cm)	10	60	A6197
603423	6" x 6" (15 x 15 cm)	10	60	A6197
603424	8" x 12" (20 x 30 cm)	5	20	A6198
603420	0.8" x 17.7" (2 x 45 cm)	5	20	A6199

References: 1. Mölnlycke® Health Care Laboratory Report 2015-3549. 2. Mölnlycke® Health Care Laboratory Report PD-521248. 3. Mölnlycke® Health Care Laboratory Report PD-505602. 4. Mölnlycke® Health Care Laboratory Report PD 522700. 5. Mölnlycke® Health Care Laboratory Report PD-521245. 6. Mölnlycke® Health Care Laboratory Report PD-521232. 8. Smet, S., Beele, H., Saine, L., Suys, E., Henrickx, B. Open, non-comparative, multi-centre post market clinical follow-up investigation to evaluate performance and safety on pressure ulcers when using a gelling fibre dressing as intended. Poster Presentation at European Pressure Ulcer Advisory Panel Conference, 2015, Ghent, Belgium. 9. Davies, P., McCarty, S., An in-use product evaluation of a gelling fibre dressing in wound management. E-poster presentation at Wounds UK Conference, 2017, Harrogate, United Kingdom.AW62

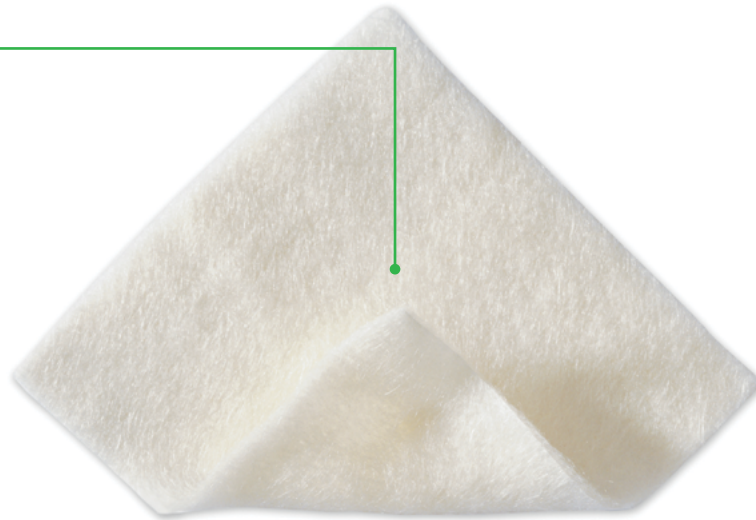
Melgisorb® Plus

The absorbent alginate dressing

Hydrophilic alginate fibers

Soft sterile dressing made of Calcium Sodium Alginate fibers

- Excellent absorption - for high exuding wounds¹
- High wet strength - to allow removal in one piece¹
- High retention - to limit maceration¹



How Melgisorb® Plus works

Melgisorb Plus absorbs large amounts of wound exudate. When absorbing, the alginate fibers become gel-like providing a moist environment conducive to wound healing. The dressing can easily be removed by irrigating with 0.9% normal saline.

Benefits of Melgisorb® Plus

- Highly absorbent¹
- Does not adhere to the wound site when gelled
- Conformable
- Can be cut to shape

Wear time

Change Melgisorb Plus dressing when saturation is reached. Melgisorb Plus can be left in place for several days depending on wound condition or as indicated by clinical practice.

Indications for use

Sterile absorbent calcium sodium alginate dressing for moderately to heavily exuding partial to full thickness wounds such as pressure sores, venous and arterial ulcers, diabetic ulcers, donor sites, post operative wounds, dermal lesions and other external wounds inflicted by trauma. Configurations available both for flat and cavity wounds.

Melgisorb® Plus ordering information

Product Code	Size	Pcs/box	Pcs/case	HCPCS
252000	2" x 2" (5 x 5 cm)	10	100	A6196
252200	4" x 4" (10 x 10 cm)	10	100	A6196
252500	4" x 8" (10 x 20 cm)	10	100	A6197
253500	1.25" x 17.7" (3 x 45 cm)	5	50	A6199

References: 1. Report Clinical Evaluation and Summary for UMT Alginate Wound Dressings Rev 2.

The antimicrobial alginate dressing

Silver containing alginate

- Calcium alginate
- Carboxymethylcellulose (CMC)
- Ionic silver

Alginate with CMC fibers

- Highly absorbent¹
- High wet tensile strength¹
- Absorbs and retains exudate with sustained antimicrobial efficacy²



Benefits of Melgisorb® Ag

- High fiber strength allows removal in one piece¹
- Rapid and sustained antimicrobial effect^{2,3}
- Sustained silver release up to 14 days²

Wear time

Melgisorb Ag may be left in place for up to 7 days, depending on the patient, the condition of the wound and surrounding skin, or as indicated by accepted clinical practice. Dressing change frequency will depend on wound condition and the level of exudate. Initially it may be necessary to change the dressing every 24 hours.

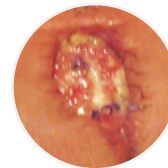
Reapply Melgisorb Ag when the secondary dressing has reached its absorbent capacity or whenever good wound care practice dictates that the dressing should be changed.

Indications for use

Melgisorb Ag is indicated for the management of moderate to heavily exuding partial to full thickness wounds such as: Post-operative wounds, Trauma wounds (dermal lesions, trauma injuries or incisions), Leg ulcers, Pressures ulcers, Diabetic ulcers, Graft and donor sites, Post-operative surgical wounds. This product can also be used under compression bandages. As the product contains alginate, it may assist in supporting the control of minor bleeding in superficial wounds. Melgisorb Ag is suitable for use, under medical supervision, on wounds that are critically colonized. Melgisorb Ag is indicated for external use only.



Cavity wound



Post-op surgical wound



Sacral pressure ulcer

Melgisorb® Ag ordering information

Product Code	Size	Pcs/box	Pcs/case	HCPCS
255050	2" x 2" (5 x 5 cm)	10	100	A6196
255100	4" x 4" (10 x 10 cm)	10	100	A6196
255150	6" x 6" (15 x 15 cm)	10	100	A6197
255200	8" x 12" (20 x 30 cm)	5	50	A6198
255600	1.2" x 18" (3 x 44 cm)	10	100	A6199

Normlgel® Ag

Antimicrobial silver wound gel



For wounds with dry to moderate exudate
Provides a three day antimicrobial barrier and the moisture donating benefits of a hydrogel.¹

How Normlgel® Ag works

Normlgel Ag is an antimicrobial hydrogel that is effective in assisting the debridement and desloughing process in dry necrotic wounds, while maintaining a moist wound environment for optimal wound healing. Normlgel Ag contains an antimicrobial silver compound that is an effective barrier to bacterial penetration by inhibiting the growth of a broad spectrum of microorganisms.¹

Benefits of Normlgel® Ag

- Adds moisture and maintains a moist wound environment
- Assists debridement and desloughing in dry and/or necrotic wounds
- Antimicrobial effect against relevant wound pathogens²
- Easy to use
- Easy to apply and stay in place

Wear time

Normlgel Ag may be left in place for up to 3 days. Dressing changes and reapplication of Normlgel may be required more frequently dependent upon wound conditions and levels of exudate.

Indications for use

Normlgel Ag is indicated under the medical supervision of a healthcare professional for the management of dry to moderate exuding partial to full thickness wounds, such as: pressure ulcers, leg ulcers, diabetic ulcers, graft and donor sites, postoperative surgical wounds and trauma wounds (dermal lesions, trauma injuries or incisions), 1st and 2nd degree burns, abrasions and lacerations.

Normlgel® Ag ordering information[^]

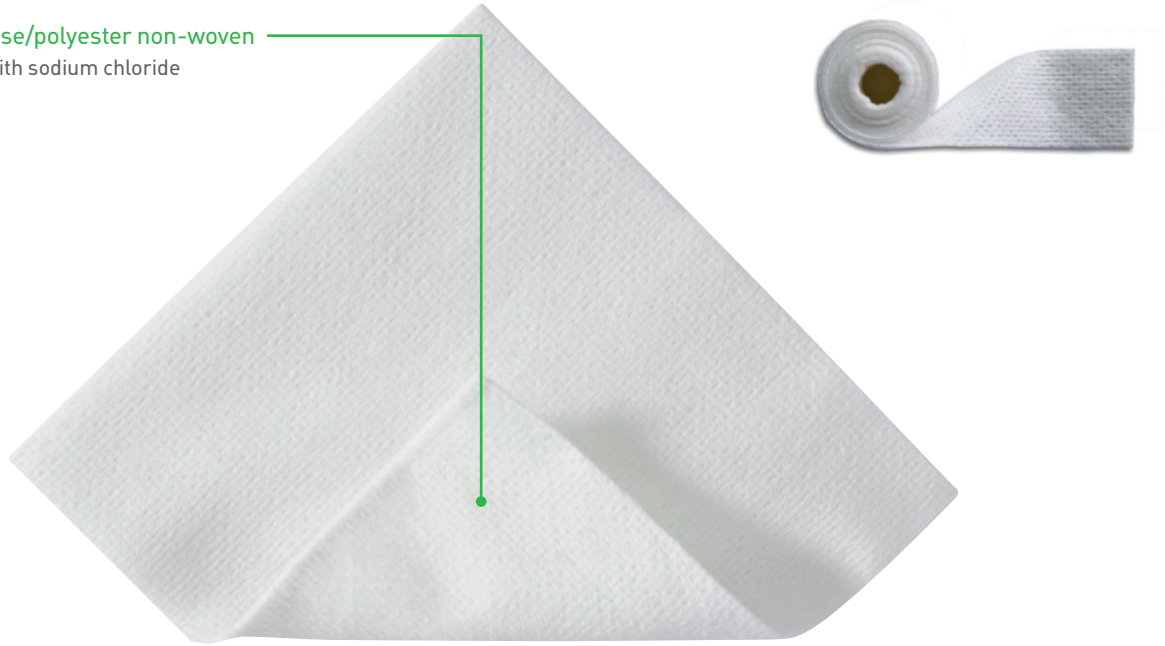
Product Code	Size	Pcs/box	Pcs/case	HCPCS
350450	1.5 oz (45gm)	10	30	A6248

[^] Normlgel Ag is unsterile and packed in tubes

The sodium chloride wound cleansing dressing

Absorbent viscose/polyester non-woven

- Impregnated with sodium chloride



How Mesalt® works

The exudate from the wound releases the sodium chloride from the dressing. Mesalt stimulates the cleansing of heavily draining and discharging wounds in the inflammatory phase by absorbing exudate, bacteria and necrotic material from the wound, thereby facilitating the natural wound healing process.

Benefits of Mesalt®

- Absorbs exudate bacteria and necrotic material (slough)
- Stimulates the cleansing of wounds
- Easy application
- Packaging not made from natural rubber latex

Wear time

Mesalt should be changed when saturated (usually once a day in heavily exuding wounds), or according to good clinical practice. If the condition of the wound deteriorates, discontinue use and consult a healthcare professional.

Indications for use

Management of moderate to heavily exuding non-infected/infected wounds such as pressure ulcers, foot ulcers and deep wound management e.g. cavity wounds and fistulas.

Mesalt® ordering information

Product Code	Size	Pcs/box	Pcs/case	HCPCS
285580	4" x 4" (2" x 2" folded)	30	240	A6222
285780	6" x 6" (3" x 3" folded)	30	240	A6222
286080	8" x 8" (4" x 4" folded)	30	180	A6228
285280	3/4" x 39" Ribbon	10	80	A6229

The absorbent composite dressing

Backing film

- Moisture vapor permeable and breathable
- Maintains a moist environment
- Barrier to moisture and bacteria†

Polyester non-woven

- Gives stability at application

Wound contact layer

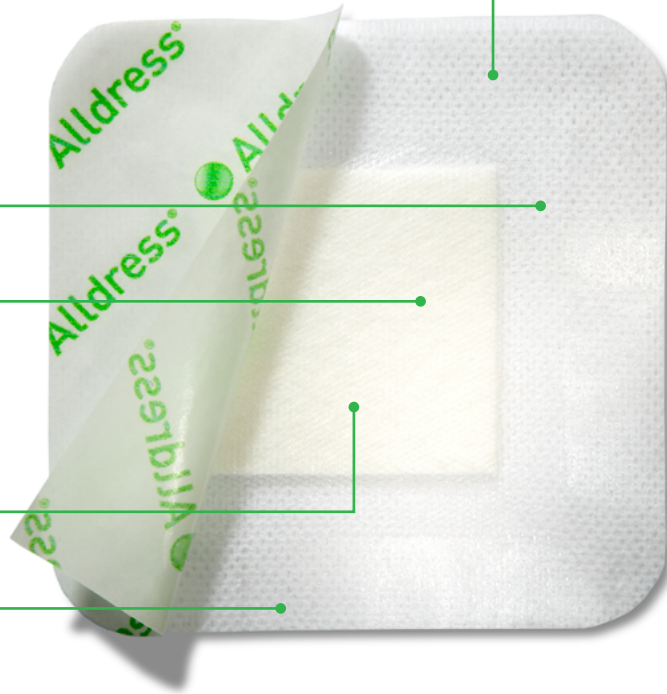
- Low adherence to wound
- Allows exudate to pass into absorbent pad
- Integrated net for absorption and retention

Absorbent pad

- Absorbs exudate

Water-based adhesive

- Secure yet gentle fixation



How Alldress® works

The net is low-adherent and protects against fibers from the absorbent pad entering the wound. The absorbent pad absorbs excess exudate and minimizes the risk of maceration to the surrounding skin, and the gentle adhesive keeps the dressing securely in place. The nonwoven layer provides stability to the dressing structure for ease of application. The semi-permeable film maintains a moist wound environment, prevents wound fluids from passing through the dressing and protects both the wound and the environment from contamination. The smooth surface reduces the friction or potential disturbance of the dressing from bed linens and clothing.

Benefits of Alldress®

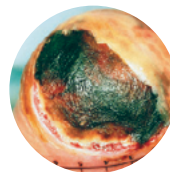
- Low adherence to the wound
- Maintains a moist environment
- Minimizes the risk of maceration
- Moisture proof and bacteria proof film backing
- Protects against contamination of bed linens
- Smooth film backing reduces friction against clothing and linens

Wear time

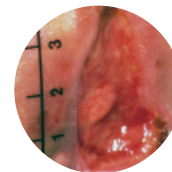
Alldress may be left in place for several days depending on the wound/skin condition or as indicated by health care professionals.

Indications for use

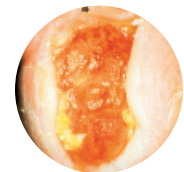
Alldress is intended to absorb, protect and maintain a moist environment in open and closed wounds. Alldress is intended for low to moderately exuding wounds.



Pressure injury



Cavity wound



Foot ulcer

Alldress® ordering information

Product Code	Size	Pcs/box	Pcs/case	HCPCS
265329	4" x 4" (10 x 10 cm)/ 2" x 2" (5 x 5 cm)	10	70	A6203
265349	6" x 6" (15 x 15 cm)/ 4" x 4" (10 x 10 cm)	10	100	A6203 A6209
265369	6" x 8" (15 x 20 cm)/ 4" x 6" (10 x 15 cm)	10	120	A6204

*Entire dressing size / Absorbent padding size

† Microbes larger than 25 nm.

Mextra® Superabsorbent

The superabsorbent dressing with a fluid-repellent backing film

Fluid-repellent backing material

- Protects against fluid strike-through

Distribution layer

- Directs exudate evenly upwards into the absorbent layer

Hydrophilic wound contact layer

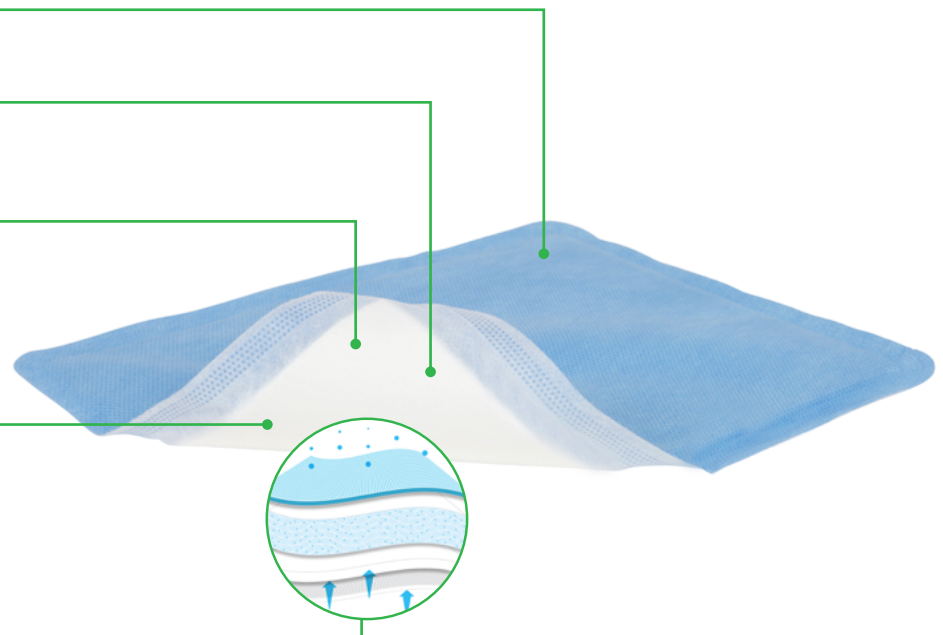
- Transmits fluid upwards into the superabsorbent layer
- Retention and absorption properties may reduce risk of maceration and protect peri-wound area

Absorbent layer with superabsorbent particles

- Transmits fluid upwards into the superabsorbent layer
- Retention and absorption properties may reduce risk of maceration and protect peri-wound area

Four layer construction

- Four Phase Absorption & Retention



Benefits of Mextra® Superabsorbent

- Helps reduce the risk of leakage and maceration through absorption and retention properties^{1,6}
- Can minimize the need for frequent dressing changes^{1,6}
- May lead to reduced treatment costs^{1,6}
- Maintains structure and integrity without becoming bulky upon exudate absorption
- Protects against fluid strike-through
- Promotes patient comfort⁷
- Has protease modulating properties³ and provides a conducive environment for healing to proceed

Frequency of change

The wound and Mextra Superabsorbent should be inspected regularly. The dressing should be changed based on the condition of the wound or before the dressing has become saturated. Mextra Superabsorbent may be left on the wound for several days.

Indications for use

Mextra Superabsorbent is intended for use on moderately to heavily exuding wounds.

Mextra® Superabsorbent ordering information

Product Code	Size	Pcs/box	Pcs/case	HCPCS
610000	5" x 5" (12.5 x 12.5 cm)	10	50	A6196
610100	5" x 7" (12.5 x 17.5 cm)	10	40	A6197
610200	5" x 9" (12.5 x 22.5 cm)	10	90	A6197
610300	7" x 9" (17.5 x 22.5 cm)	10	40	A6197
610400	9" x 11" (22.5 x 27.5 cm)	10	40	A6198
610500	9" x 13" (22.5 x 32.5 cm)	10	40	A6198

References: 1. MHC data on file report no: LIMS 20161110-004 2. Mölnlycke® Health Care Laboratory report no: PD-522474, 2016 (unpublished). 3. Mölnlycke® Health Care data on file report 20130104-004. 4. Eming, S., Smola, H., Hartmann, B., Malchau, G., Wegner, R., Krieg, T., Smola-Hess, S. The inhibition of matrix metalloproteinase activity in chronic wounds by a polyacrylate superabsorbent. *Biomaterials* 2008; 29(19): 2932-2940 5. MHC data on file report no: PD-529849 6. Ferreras DT, Malcomb R, A 4-Layered superabsorbent dressing versus the standard ABD pad in managing moderate to high exudate venous leg injury. Poster presented at Symposium on Advanced Wound Care Fall, Las Vegas Nevada, United States of America, 2016 7. MHC Survey report no: PD-522187

Mepore® Pro

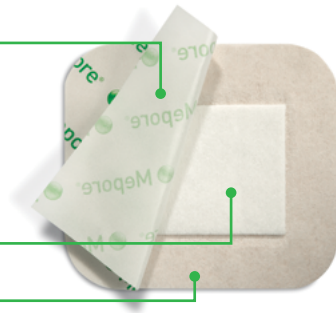
The showerproof, self-adhesive absorbent dressing

Backing film

- Soft, elastic, non-woven polyester
- Barrier to moisture and bacteria†
- Breathable

Absorbent wound pad

Skin friendly adhesive



Mepore®

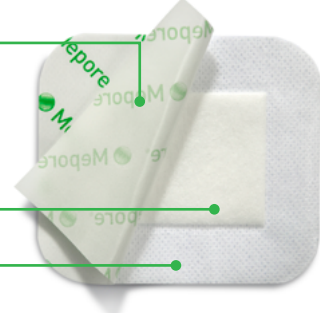
The self-adhesive absorbent dressing

Backing film

- Soft, elastic, non-woven fabric backing with high breathability

Absorbent wound pad

Skin friendly adhesive



How Mepore® Pro works

The backing film allows showering and protects the wound from moisture and contamination. It also protects the clinician, clothing and bed linen from blood or exudate strike-through. Due to an absorbent pad and a high vapor permeability of the backing film, Mepore Pro offers good total fluid handling. The polyacrylate adhesive is designed to be gentle to the skin and at the same time provide secure fixation. The easy-to remove protection paper permits aseptic application and simplifies dressing application.

Benefits of Mepore® Pro

- Skin friendly adhesive
- Low adherent wound contact layer minimizes risk of adherence to the wound
- Easy-to-remove protection paper allows for convenient and aseptic application
- Backing film provides barrier to moisture and bacteria
- Breathable film
- Low friction to clothing and bed linens
- Large sizes ideal for post-surgical use

Indications for use

Mepore Pro is designed for use on low to moderately exuding wounds, such as surgical wounds, cuts and abrasions.

How Mepore® works

The porous structure of the non-woven backing fabric ensures air and water vapor permeability, and it provides a barrier for blood and fluid strike-through. Mepore is flexible, conforms well to body contours and allows body movements when in place. The polyacrylate adhesive has been designed to be gentle to the skin but at the same time provide secure fixation. The low-adherent wound contact layer reduces the risk of adherence to the wound.

Benefits of Mepore®

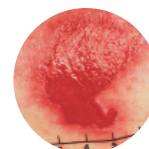
- Skin friendly adhesive
- Low adherent wound contact layer minimizes risk of adherence to the wound
- Easy-to-remove protection paper allows for convenient and aseptic application
- Flexible fluid repellent backing

Indications for use

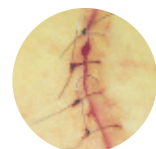
Mepore is a self-adhesive sterile absorbent dressing intended for treatin low to moderately exuding wounds, such as surgical wounds, cuts and abrasions.

Wear time

The frequency of dressing changes should be governed by the condition of the wound in accordance with accepted clinical practice.



Fragile epithelializing wound



Surgical wound

Mepore® Pro ordering information†

Product Code	Size	Pcs/box	Pcs/case	HCPCS
670990	3.6" x 4" (9 x 10 cm)	40	320	A6203
671090	3.6" x 6" (9 x 15 cm)	40	320	A6203
671190	3.6" x 8" (9 x 20 cm)	30	180	A6203
671290	3.6" x 10" (9 x 25 cm)	30	180	A6203
671390	3.6" x 12" (9 x 30 cm)	30	270	A6203

Mepore® ordering information

Product Code	Size	Pcs/box	Pcs/case	HCPCS
670800	2.5" x 3" (6 x 7 cm)	60	480	—
670900	3.6" x 4" (9 x 10 cm)	50	400	—
671000	3.6" x 6" (9 x 15 cm)	50	400	—
671299	3.6" x 10" (9 x 25 cm)	30	180	—
671300	3.6" x 12" (9 x 30 cm)	30	270	—
671400	3.6" x 14" (9 x 35 cm)	30	180	—

† Microbes larger than 25 nm.

Mepore® Film

The self-adhesive breathable, transparent film dressing

Framed delivery system

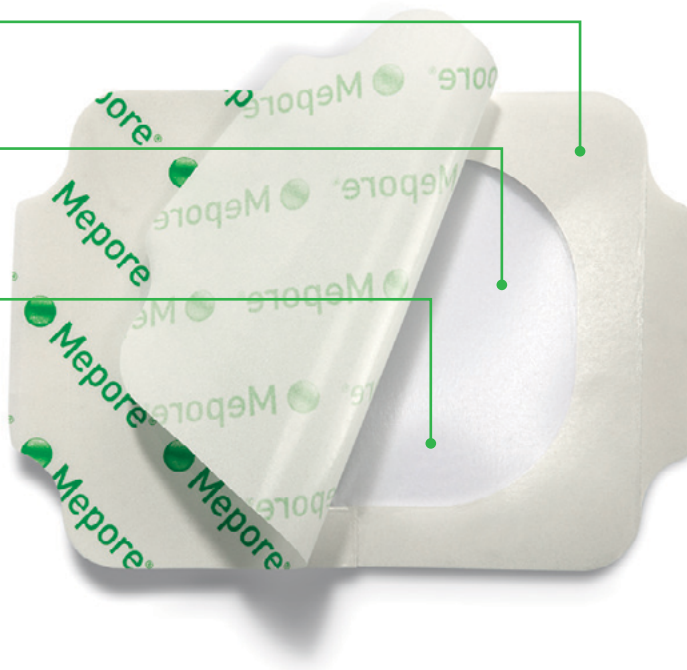
- Easy application

Polyacrylic adhesive

- Skin friendly adhesive
- Secure fixation

Polyurethane film

- Breathable and elastic
- Transparent
- Barrier to moisture and bacteria*



How Mepore® Film works

Mepore Film maintains a moist environment in the wound and due to its high vapor permeability, allows excess moisture to pass away from the wound and surrounding skin.

Benefits of Mepore® Film

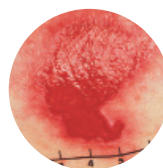
- High breathability
- Easy application
- Conforms easily to body contours
- Skin friendly adhesive
- Maintains a moist environment
- Protects wound surface
- Barrier to moisture and bacteria*
- Protects skin from friction injuries
- Secure Fixation

Wear time

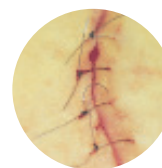
The dressing may be left in place for several days depending on the wound/skin condition or as indicated by good clinical practice.

Indications for use

Mepore Film is intended for protection of intact skin and superficial wounds. Mepore Film can also be used for fixation of medical devices such as wound dressings, tubes and cannulas.



Cavity wound



Foot ulcer

Mepore® Film ordering information

Product Code	Size	Pcs/box	Pcs/case	HCPCS
270600	2.4" x 2.6" (6 x 7 cm)	100	600	A6257
271500	4" x 5" (10 x 12.7 cm)	70	210	A6258
272500	4" x 10" (10 x 25 cm)	20	100	A6258
273000	6" x 8.5" (15 x 21.5 cm)	10	50	A6258

Mepiform®

The self-adherent silicone gel sheeting for scar management

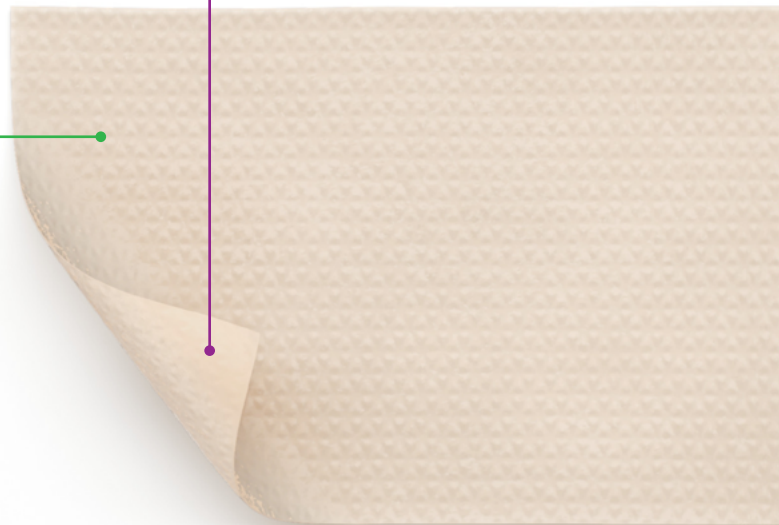
Safetac® Technology

- Atraumatic to skin on removal¹
- Adheres gently yet securely to skin



Non-woven backing film

- Breathable
- Moisture proof



How Mepiform® works

Topical silicone empirically has been shown to have a positive impact on hypertrophic and keloid scars.² Mepiform should optimally be worn 24 hours a day. It is recommended that Mepiform is removed once a day (e.g., when showering or bathing) for inspection and washing of the skin.

For prophylactic treatment, Mepiform should be used for 2–6 months depending on the condition of the scar.

Benefits of Mepiform®

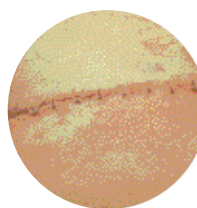
- Conforms well to body contours
- No extra fixation is needed
- May be cut to size
- Thin, flexible and discreet
- May be worn in daily activities
- May be re-applied
- May be used for several days

Wear time

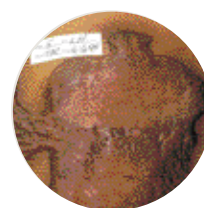
Mepiform should optimally be worn for 24 hours a day. Remove the dressing once per day for inspection and washing of the skin. The dressing can then be reapplied. Mepiform should under normal conditions be changed every 3 - 7 days or when the adherent properties of the dressing are no longer sufficient.

Indications for use

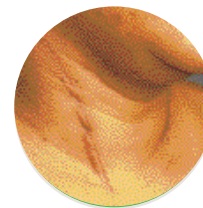
Mepiform is designed for the management of both old and new hypertrophic and keloid scars. It can also be used as a prophylactic therapy on closed wounds for prevention of hypertrophic or keloid scarring.



Closed surgical wounds



Keloids



Hypertrophic scars

Mepiform® ordering information

Product Code	Size	Pcs/box	Pcs/case
293199	1.6" x 12" (4 x 30 cm)	5	50
293299	2" x 3" (5 x 7.5 cm)	5	50
293499	4" x 7" (10 x 18 cm)	5	50

References: 1. White R. et al. Evidence for atraumatic soft silicone wound dressing use. Wounds UK, 2005. 2. Carney S.A, Cason C.G, Gowar J.P. "Cira-Care gel sheeting in the management of hypertrophic scarring." The British Library 1994.

The self-adherent conformable fixation tape

Safetac® Technology

- Reduces pain and trauma upon removal¹

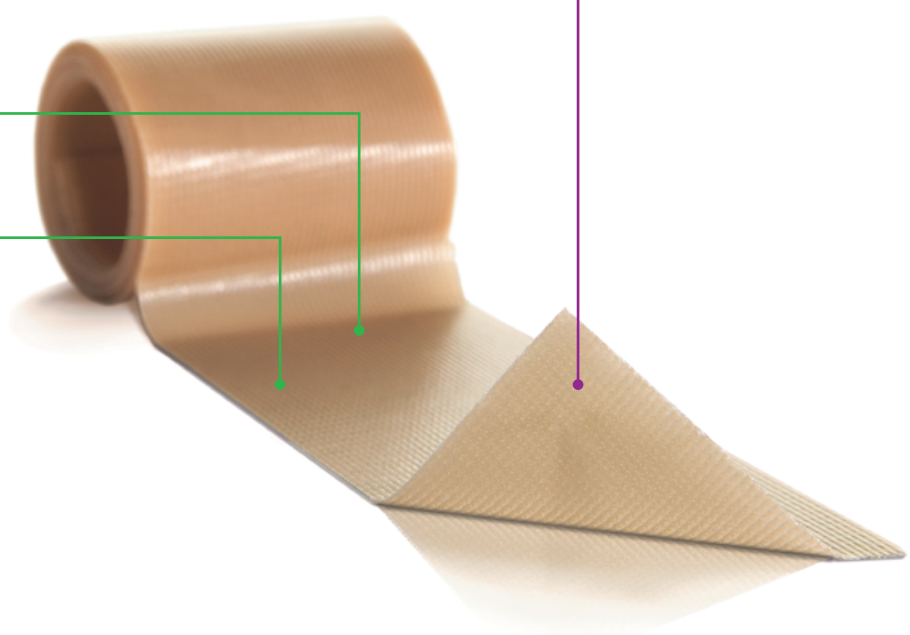


Polyurethane backing film

- Breathable
- Moisture proof

Knitted fabric

- Conformable
- Easy to cut



How Mepitac® works

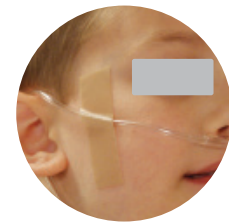
Mepitac is highly conformable and easy to apply and remove. The Safetac® Technology layer allows secure fixation and atraumatic removal from skin and hair.¹ If inspection or repositioning is necessary, Mepitac can be lifted and re-applied. It is an ideal fixation solution for patients with fragile and sensitive skin or with allergies to traditional adhesives. Mepitac is suitable for patients requiring repeated application and removal of tape over the same area (e.g., neonates and dialysis patients).

Benefits of Mepitac®

- Atraumatic to the skin on removal¹
- Conforms well to body contours
- Leaves no residue
- Moisture proof film backing
- Breathable
- May be repositioned

Indications for use

Mepitac is intended for fixation of medical devices such as drains, tubes, probes, electrodes, IV cannula, and dressings. Mepitac offers gentle skin protection when used under devices such as tubes.



Mepitac® ordering information[†]

Product Code	Size	Rolls/box	HCPCS
298300	3/4" x 118" (2 x 300 cm)	12	A4452
298400	1.5" x 59" (4 x 150 cm)	12	A4452

References: 1. White R. et al. Evidence for atraumatic soft silicone wound dressing use. Wounds UK, 2005.

The self-adhesive fabric tape

Non-woven Polyester Fabric Backing

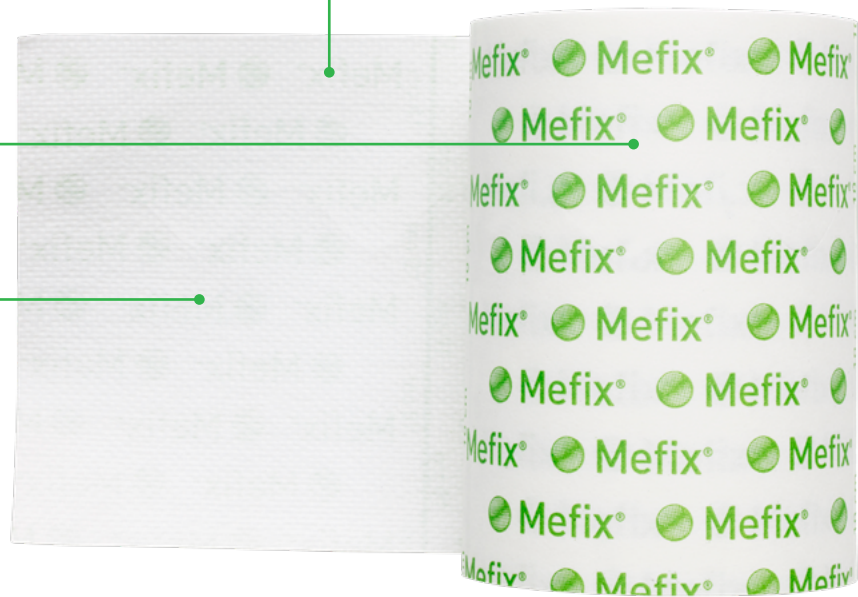
- Soft and elastic
- Non-absorbent

Protection Paper

- Easy-to-remove
- Premeasured
- Perforated split

Polyacrylate Adhesive

- Skin friendly
- Water based
- Solvent free



How Mefix® works

The porous structure of the nonwoven fabric ensures air and water vapor permeability. Mefix is stretchable, conforms well to body contours and allows body movements when in place. The fabric is non-absorbent and provides a barrier to blood and fluid. The polyacrylate adhesive has been designed to be gentle to the skin but at the same time provide secure fixation.

The easy-to-remove protection paper is pre-measured in 4 inch intervals and has a perforated split for easy removal and application. Mefix may be easily cut to the desired shape and size.

Benefits of Mefix®

- Skin friendly adhesive
- Provides secure fixation
- Stretchable, conformable fabric backing provides barrier to blood and fluid
- Pre-measured release paper allows for convenient measurement/cutting
- May be applied over flexing areas such as neck, elbows, knees
- Air permeable
- Easy-to-remove backing paper with perforated split

Indications for use

Mefix is a self-adhesive fabric for fixation of dressings, tubes and cannulas

Mefix® ordering information

Product Code	Size	Pcs/box	Pcs/case	HCPCS
310299 [‡]	1" x 11 yds (2.5 cm x 10 m)	1	40	A4450
310599	2" x 11 yds (5 cm x 10 m)	1	40	A4450
311099	4" x 11 yds (10 cm x 10 m)	1	20	A4450
311599	6" x 11 yds (15 cm x 10 m)	1	15	A4450
312000	8" x 11 yds (20 cm x 10 m)	1	10	-

[^] Packaged in boxes containing individual, non sterile rolls.

[‡] This size does not have a perforated split in the protection paper

Setopress®

High compression bandages



How Setopress® works

Setopress is a lightweight high compression bandage. To ensure correct application, a simple visual guide is permanently printed on the bandage. The visual guide consists of color rectangles which become squares when the correct extension is reached. Extending the **BROWN** rectangles to squares provides 40mmHg at the ankle. Extending the **GREEN** rectangles to squares provides 30mmHg at the ankle.

If a patient is not accustomed to compression therapy or finds it difficult to comply, moderate compression may be used initially. When applied correctly, Setopress high compression bandages produce a level of compression that has been shown to heal even long-standing leg injury within 12 weeks.¹

The visual application guide makes it easy to apply Setopress consistently and correctly.

Benefits of Setopress®

- Provides effective high compression²
- Allows for 2 different levels of compression
- Easy-to-use application technique
- Long enough for even the largest limbs
- Thin enough to be worn with shoes to encourage mobility
- Washable for repeated use

Indications for use

Bandage for the treatment of venous leg ulcers.

Material properties

- Polyamide
- Elastane
- Cotton
- Not made with natural rubber latex

Setopress® ordering information[†]

Product Code	Size	Pcs/box	Pcs/case	HCPCS
3505	4" x 138" (10 cm x 3.5 m)	1	12	A6452

[†] Individually packed in cartons of 12

PRECAUTIONS:

- DO NOT apply Setopress® if arterial insufficiency is present or suspected
- DO NOT use the figure-of-eight bandaging technique
- DO NOT use on limbs with a circumference of less than 7" (18 cm)

References: 1. Blair et al, Sustained Compression and Healing of Chronic Venous Injury, BMJ 1988 297; 1159-64 2. Gould DJ, Cambell S, Newten H, et al, Setopress® vs. Elastocrepe in Chronic Venous Ulceration. British Journal of Nursing 1998, 7(2): 66-70, 72-73

Tubifast® 2-Way Stretch™

The lightweight, tubular retention dressing

Tubular bandage

- Does not require pins or tape

Quick and easy to use

- Cut to size and stretch over the dressing for even, non-constricting fit

Roll design

- Ensures cost-effective use by minimizing waste

Quick and easy to apply

Tubifast 2-Way Stretch™

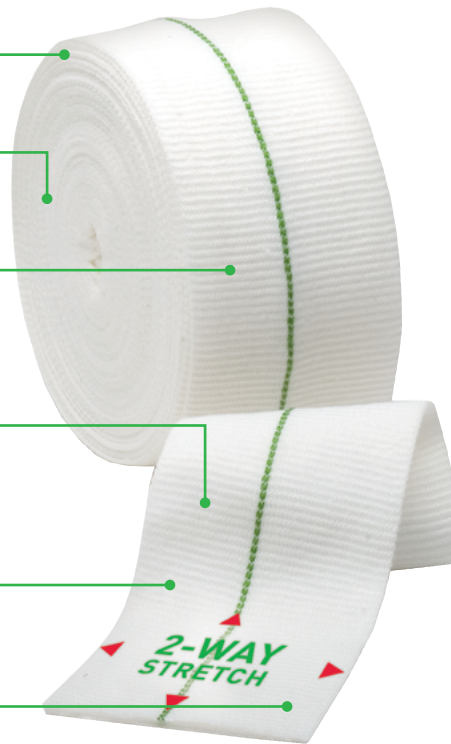
- Available in 5 color-coded widths
- Designed to fit snugly over all limbs, no matter what the shape or size

Radial and longitudinal elasticity

- Allows patients complete freedom of movement, with added comfort¹

Decreased fraying

- So there is less risk of fibers in the wound²



How Tubifast® works

Tubifast 2-Way Stretch is manufactured from viscose with very fine elastane threads knitted into the fabric radially and longitudinally to provide light elasticity. The Tubifast bandage holds dressings securely, without constriction or compression. Each size is identified by a colored line knitted into the bandage. It's quick and easy to use: cut to size and stretch over the dressing for an even, non-constricting fit.

Benefits of Tubifast®

- Tubifast bandages holds dressings securely, without constriction or compression
- Can minimize the need for frequent dressing changes^{1,6}
- May lead to reduced treatment costs^{1,6}
- Maintains structure and integrity without becoming bulky upon exudate absorption

Indications for use

Dressing retention, patch wrapping, skin covering and as an undercast stockinette.

Material properties

- Viscose, Elastane and Polyamide
- Not made with natural rubber latex

Tubifast® 2-Way Stretch™ ordering information

Product Code	Line	Product	Limb size	Bandage Width
2434	RED	Small Limbs	3.5" - 7.1" (9 - 18 cm)	1.5" (3.5 cm)
2436	GREEN	Small and medium limbs	5.5" - 9.5" (14 - 24 cm)	2" (5 cm)
2438	BLUE	Large limbs	9.5" - 15.8" (24 - 40 cm)	3" (7.5 cm)
2440	YELLOW	Extra-large limbs, heads, children's trunks	13.8" - 25.2" (35 - 64 cm)	4.5" (10.75 cm)
2444	PURPLE	Large adult trunks	25.2" - 51.2" (64 - 130 cm)	8" (20 cm)

* Length for all Tubifast® 2-way stretch is 10 m.

References: 1. Published data shows that Tubifast® 2-Way Stretch exceeds the minimum requirement of longitudinal stretch for the actions of sitting, bending and flexing. Physical testing of textiles, B. P. Saville, Woodhead Publishing, 1999. 2. Data on file.

Tubifast® Garments

Ready to wear garments



How Tubifast® Garments works

Ready-made Tubifast Garments are designed for dressing retention and wet or dry wrapping. They are available in full sleeved vests, tights, leggings, socks, and gloves for children six months and older. Gloves also comes in adult sizes.

Tubifast Garments do not require tapes, pins or ties and are quick and easy to apply. The two-way stretch construction ensures complete freedom of movement, and the flat seams help prevent irritation to sensitive skin. Tubifast Garments are comfortable to wear at night and under ordinary clothes, promoting active days and restful nights. They are also washable for continued use.

Benefits of Tubifast® Garments

- Flat seams help prevent irritation to sensitive skin
- Convenient, quick and simple application
- Comfortable to wear under regular clothes or at night
- Allow for freedom of movement
- Available in full-sleeved vests, tights, leggings, socks, and gloves
- Smaller sizes incorporate fun characters

Indications for use

Dressing retention, patch wrapping, skin covering and as an undercast stockinette.

Material properties

- Viscose, Elastane and Polyamide
- Not made with natural rubber latex

Tubifast® Garments ordering information

Product Code	Description	Age/Size
992007	Vest	6-24 months
992008	Vest	2-5 years
992009	Vest	5-8 years
992010	Vest	8-11 years
992011	Vest	11-14 years
992012	Tights	6-24 months
992013	Leggings	2-5 years
992014	Leggings	5-8 years
992015	Leggings	8-11 years
992016	Leggings	11-14 years
992017	Socks	One size fits all 2-14 yrs
5922	Gloves	Extra Small Child
5923	Gloves	Small Child
5921	Gloves	Med/Lg Child - Sm/Med Adult
5920	Gloves	Medium/Large Adult

Recommended Fitting Sizes:

	Vests, Tights			Vests, Leggings	
	6-24 months	2 - 5 years	5 - 8 years	8 - 11 years	11 - 14 years
Height	74 - 86 cm	86-110 cm	110 - 128 cm	128 - 146 cm	146 - 164 cm
Inside Leg	28 - 34 cm	34 - 47 cm	47 - 58 cm	58 - 68 cm	68 - 77 cm
Arm Length	25 - 29.5 cm	29.5 - 35.5 cm	35.5 - 42 cm	42 - 49 cm	49 - 57.5 cm
	Socks - One size fits all 2 - 14 years				

The multi-purpose elasticated tubular support bandage



How Tubigrip® works

Tubigrip is a multi-purpose tubular support bandage that provides firm support in the management of sprains, strains and swelling. Product application is easy to use as it can be easily applied and reapplied.

Tubigrip's elasticated tubular construction stays securely in position without pins or tapes. Tubigrip can easily be reapplied after washing, without loss of effect. Tubigrip 10m helps reduce waste, as only the exact amount required is cut from the roll. Tubigrip 10m is available in two shades – natural and beige.

Benefits of Tubigrip®

- Provides firm support
- Easy to apply and reapply
- Full range of sizes to suit most applications
- No pins or tapes needed
- Washable and reusable
- Choice of two colors (10m only)

Indications for use

Treatment of strains, sprains, soft tissue injuries, joint effusions, general oedema, post burn scarring, rib cage injuries, pressure dressings and arm fixation.

Material properties

- Cotton
- Elastodiene
- Polyester

Tubigrip® ordering information

		Product Code			HCPCS
		Natural		Beige	
Shade		Natural		Beige	
Size		3.28' (1m)	32.81' (10m)	32.81' (10m)	
A	Infant feet and arms	-	1435	-	A6457
B	Small hands and arms	1520	1436	1449	A6457
C	Medium arms, small ankles	1521	1443	1450	A6457
D	Large arms, medium ankles, small knees	1522	1437	1451	A6457
E	Large ankles, medium knees, small thighs	1528	1434	1448	A6457
F	Large knees, medium thighs	1523	1438	1452	A6457
G	Large thighs	-	1439	1453	A6457
J	Small trunks	-	1440	-	A6457
K	Small/Medium trunks	-	1441	-	A6457
L	Large trunks	-	1442	-	A6457

Tubigrip® sizes

Size	Min.limb circumference (inch)	Max. limb circumference (inch)	Min.limb circumference (cm)	Max. limb circumference (cm)	Sub-bandage pressure (mmHg)
A	3.9	5.7	10	14.5	20 - 30
B	5.7	11.4	14.5	29	10 - 20
C	8.7	13.8	22	35	
D	10.2	15.7	26	40	
E	11.4	18.1	29	46	
F	13.8	20.9	35	53	5 - 15
G	15.7	24.4	40	62	
J	21.3	32.3	54	82	
K	27.6	44.5	70	113	
L	41.7	58.7	106	149	

^ Tubigrip Tape Measuring Guide available upon request.

Dermafit®

The multi-purpose elasticated tubular bandage not made with rubber latex



How Dermafit® works

Dermafit is a multi-purpose tubular support bandage that provides support in the management of sprains, strains and swelling. Product application is quick and easy to use as it can be easily applied and reapplied. Dermafit stays securely in position without pins or tapes, unlike conventional bandages. Dermafit can easily be reapplied after washing, without loss of effect.

Benefits of Dermafit®

- Easy to apply and reapply
- Full range of sizes to suit most applications
- No pins or tapes needed
- Cold-water washable and reusable
- 10m roll reduces waste
- Not made with natural rubber latex

Indications for use

Effective management of strains, sprains, soft tissue injuries.

Material properties

- Cotton
- Elastic

Dermafit® ordering information

Size	Description	Product Code for 10m roll (32.81')	Bandage Size
A	Infant feet and arms	131935	1.75"(4.4 cm)
B	Small hands and limbs	131936	2.00"(5.1 cm)
C	Adult hands and limbs	131943	2.75"(7 cm)
D	Large arms and legs	131937	3.25"(8.3 cm)
E	Legs and small thighs	131934	3.75"(9.5 cm)
F	Large knees and thighs	131938	4.25"(10.8 cm)
G	Large thighs	131939	5.50"(14 cm)
J	Small trunks	131940	7.00"(17.8 cm)
K	Medium trunks	131941	8.50"(21.6 cm)
L	Large trunks	131942	12.50"(31.8 cm)

Mölnlycke® Z-Flo™ Fluidized Positioner

Tailored positioning designed to maximize immersion and envelopment

Contoured envelopment

- Ability to customize shape and dictate position
- Maintains set position more effectively than foam, wedges or pillows¹
- Can accommodate medical devices, tubes or pre-existing condition

Highly effective immersion

- Continuously redistributes pressure to protect patients at risk
- Minimize tissue loads
- Significantly reduces stress and shear compared to medical foam and gel products^{2,3}



How Z-Flo™ Fluidized Positioners works

Z-Flo Fluidized Positioners are used mitigate pressure injury risk factors while maintaining neutral body alignment. Our patented and versatile positioners are not predisposed to an existing shape. Therefore, each distinctive patient, their anatomy, medical devices and preexisting conditions can be addressed and accounted for. Z-Flo Fluidized Positioners provide measurable patient and economic rewards across the patient care journey.



Occipital protection and positive airway breathing



Dictate and tailor patient turns



Heel offloading

Indications for use

Mölnlycke Z-Flo Fluidized Positioner is designed to provide patient positioning, pressure redistribution and/or to offload anatomical sites, which may be used as part of a prophylactic therapy to help prevent pressure ulcers.

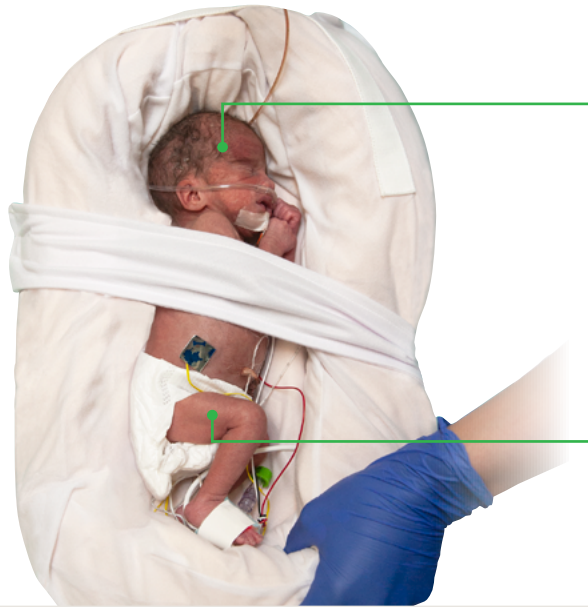
Mölnlycke® Z-Flo™ Fluidized Positioner ordering information: Adult

Product Code	Description	Size	Unit of Meas.	Qty. per UOM	HCPCS Code
1401001	Small Positioner with 2 Tabs	11" x 22"	EA	1	E0190
1401003	Medium Positioner with Tab	16" x 30"	EA	1	E0190
1401005	Large Positioner	25" x 36"	EA	1	E0190
1401007	Small Positioner	12" x 20"	CA	8	E0190
1401008	Small Positioner with Cover	12" x 20"	CA	8	E0190
1401011	Medium Positioner	16" x 30"	EA	1	E0190
1400902	Adult Positioner Kit - 1 Medium Positioner (16" x 30") and 1 Small Positioner (12" x 20")		EA	1	—

References: 1. Cooper, M., et al., Bundling for Change: Implementing Pressure Injury Prevention, Poster WOCN 2017 Conference 2. Katzungold R, Gefen A. What makes a good head positioner for preventing occipital pressure ulcers. International Wound Journal. 2017; 1-7 3. Katzungold, R; & Gefen, A. (2019). Modelling an adult human head on a donut-shaped gel head support for pressure ulcer prevention. International Wound Journal, 1-10.

Mölnlycke® Z-Flo™ Fluidized Neonatal Positioner

Neonatal Developmental Positioning



Cognitive Development via better sleep



Flexed, contained and midline

How Z-Flo™ Fluidized Neonatal Positioners work

Z-Flo Fluidized Positioners promote midline orientation, flexion, and comfort. In a randomized controlled trial, the use of Z-Flo vs. standard positioning devices found that infants calmed more easily, showed reduced wakefulness, and were observed to sleep better. In addition to aiding in neuromuscular development the supportive positioning product points to improved outcomes in flexor tone, symmetrical movement, head shape and ROM for NICU patients.⁵

Indications for use

Mölnlycke Z-Flo Fluidized Positioner is designed to provide patient positioning, pressure redistribution and/or to offload anatomical sites, which may be used as part of a prophylactic therapy to help prevent pressure ulcers.



Reduce interface pressure, friction and shear by supporting the occiput, ears and neck while promoting positive airway breathing.⁶



Support and align medical tubing and lines while avoid torque and tension that could affect infant tissues or position.⁴

Mölnlycke® Z-Flo™ Fluidized Positioner order information: Neonatal and Pediatric

Product Code	Description	Size	Unit of Meas.	Qty. per UOM	HCPCS Code
1400227	Small Positioner with Cover	7" x 10"	CA	12	-
1400239	Medium Positioner with Cover	9" x 15"	CA	6	-
1400200	Large Positioner with Cover	12" x 20"	CA	6	E0190
1400222	Small Tube with 3 Disposable Covers (w/ 18 disposable covers)	30" x 6.5"	CA	6	-
1400224	Large Tube Positioner with Cover	60" x 6.5"	CA	6	-
1400206	Medium Full Body Positioner with Cover	16" x 24"	CA	6	E0190
1400213	Large Full Body Positioner with Cover	20" x 30"	CA	4	-
1400304	Medium Full Body Kit - 1 Medium Full Body (16" x 24"), 1 Small Positioner (7" x 10"), 2 Covers and 2 Straps (20")		CA	6	-

Reference: 1. Visscher, M., Lacina, L., Casper, T. et al. Conformational Positioning Improves Sleep in Premature Infants with Feeding Difficulties. *The Journal of Pediatrics*, 2014. www.jpeds.com 2. Altimier, L., & Phillips, R. (2016). The neonatal integrative developmental care model: Advanced clinical applications of the seven core measures for neuroprotective family-centered developmental care. *Newborn And Infant Nursing Reviews*, 16, 230-244. doi:10.1053/j.nainr.2016.09.030. 3. Visscher, M., Lacina, L., Casper, T. et al. Conformational Positioning Improves Sleep in Premature Infants with Feeding Difficulties. *The Journal of Pediatrics*, 2014. www.jpeds.com 4. Hunter, J. (2010). Therapeutic Positioning: Neuromotor, Physiologic, and Sleep Implications. In *Developmental Care of Newborns and Infants, A Guide for Health Professionals*, 2nd ed pp. 285-312. Glenview: NANN.] 5. Barr, Jannie. The trials and tribulations of the introduction and implementation of new positioning products in the NICU. Poster presentation, Mid-America Neonatal Therapists Association 6. Brennan M and Laconti, D. Using Conformational Positioning to Reduce Hospital-Acquired Pressure Ulcers. *Journal of Nursing Quality*, 2013

Mölnlycke® Tortoise® Sling System

A support surface that provides pressure redistribution

Low-friction Pad

- Can remain under the patient at all times
- Includes air bladders which help provide pressure redistribution for patients

Side flaps

- Helps secure Z-Flo™ Fluidized Positioner when patient is turned

Main handles

- For use with lift or manually for turning and lateral transfers

White handles

- To facilitate boosting the patient

Z-Flo™ Fluidized Positioner

Helps maintain desired patient turn



Head Support

- When used as a sling

Sacral image and lateral line

- Helps guide caregivers on the optimal patient position

Label

- With QR code that links to instructional videos

Tail

- Creates both envelopment and secures patient positioning when tucked



How the Tortoise™ Sling System works

The Mölnlycke Tortoise Sling is your all-in-one solution for patient handling. With easy-to-use features and a sleek design, the Tortoise Sling aids in patient transfers from bed to chair without compromising quality of care to the patient and caregiver. The handling of the patient can either be performed by connecting the device to a lift or by manual usage.

Indications for use

Mölnlycke Tortoise Sling system is designed to provide patient turning and repositioning, which may be used as part of a prophylactic therapy to help prevent pressure ulcers. Indications for use: Patient turning and repositioning, Pressure redistribution, Lateral transfer, Vertical transfer.

Benefits of the Tortoise™ Sling System

- Safe, secure patient moving and maintainable repositioning to protect at-risk anatomical sites¹
- Less effort required to effectively turn and reposition patients¹
- Low profile air chamber adapts to the patient by positive air displacement²
- Designed to greatly increase patient's comfort
- For single patient use only
- Remain under the patient for continuous support for the duration of care

Mölnlycke® Tortoise® Sling ordering information

Product Code	Product Name	Product Description	Units	HCPCS Code
1400805	Mölnlycke Tortoise Sling System - Standard	Sling PAD and Z-Flo Positioner	1	E0621
1400806	Mölnlycke Tortoise Sling System - Bariatric	Sling PAD and Z-Flo Positioner	1	E0621
1400807	Mölnlycke Tortoise Sling - Standard	Sling PAD	2	E0621
1400808	Mölnlycke Tortoise Sling - Bariatric	Sling PAD	1	E0621

Reference: 1. Trevellini, A. Chenel. Connecting the dots: pressure ulcer prevention and safe patient handling. Poster presentation. 2. Elling, R. Use of a positive air displacement safe patient handling system to reduce facility acquired pressure injury. Poster presentation. 3. Kass, J. Economic Impact of a Safe Patient Handling and Mobility System on Staff and Safety in a Long term Acute Care Unit. Poster Presentation.

Mölnlycke® Tortoise® Intuitive Turning & Positioning System

A support surface designed for safe patient handling and patient protection

Tortoise Pad

- Enhanced immersion and envelopment for patient protection
- Ergonomic handles for turning, boosting, and repositioning

Sacrum and lateral line

- Guides caregivers towards the optimal patient and Tortoise position

Z-Flo™ Positioner

- To customize shape and dictate position
- Maintains set position more effectively than foam wedges or pillows
- Can accommodate medical devices, tubes or pre-existing conditions



Tuck the tail

- Enhances envelopment and maintains the patient's position

QR-code

- Directs to the instructional videos

How the Mölnlycke® Tortoise™ Turning & Positioning System works

The Mölnlycke Tortoise Turning & Positioning System is a unique and simple non-powered system for positioning and offloading that is easy to use, safe for both patients and caregivers, and effective in offloading bony prominences.¹ The low pressure air chamber adjusts to the patient's body, evenly redistributing the pressure to offload the sacrum and greater trochanter.² The characteristics of the Mölnlycke® Tortoise Turning & Positioning System, which includes a low-friction mat with reinforced handles to provide an ergonomic grip, allows caregivers to easily turn and reposition the patient to the desired angle. Less strain on caregivers' necks and backs should help reduce the occurrence of back injuries among nurses and hospital staff.³

Available in a Bariatric size to accommodate Bariatric sized beds. Tortoise Turning and Positioning system can also be used for lateral transfer of patients weighing up to 880 lbs.

Benefits of the Mölnlycke® Tortoise™ Turning & Positioning System

- Safe, secure patient moving and maintainable repositioning to protect at-risk anatomical sites¹
- Less effort required to effectively turn and reposition patients¹
- Low profile air chamber adapts to the patient by positive air displacement²
- Designed to greatly increase patient's comfort
- For single patient use only

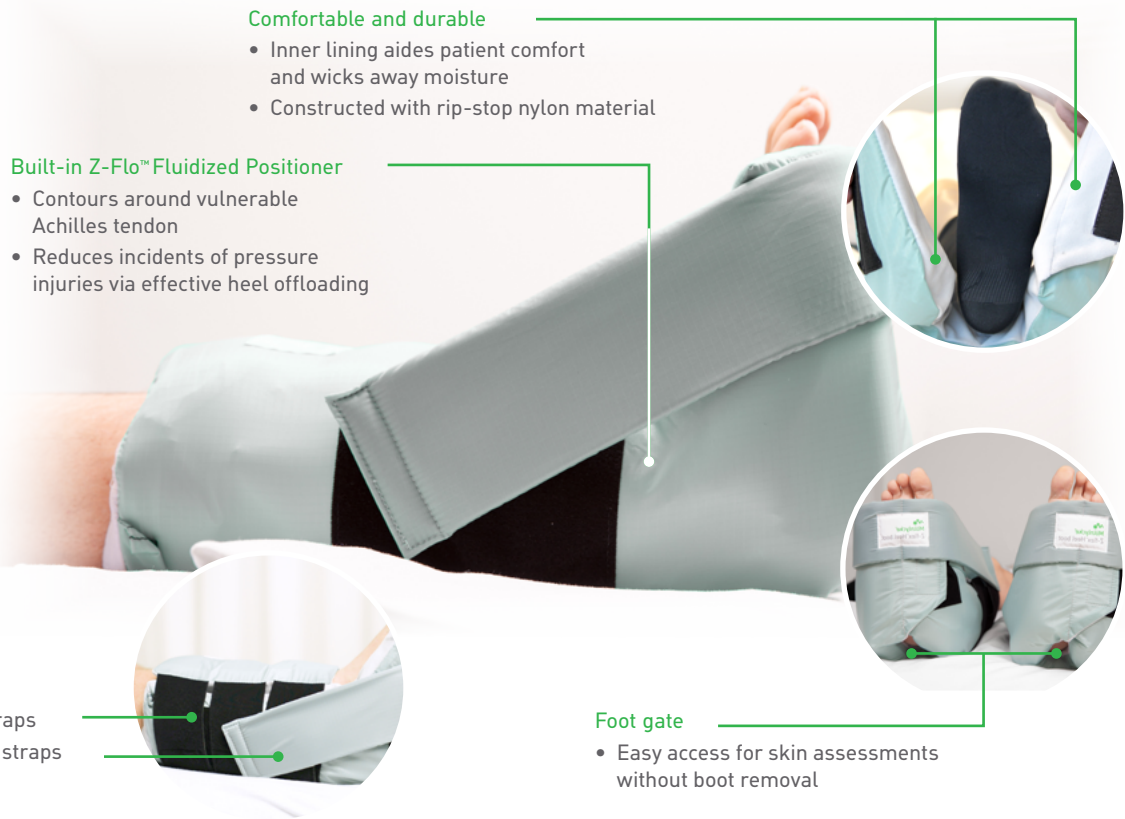
Mölnlycke® Tortoise® Intuitive Turning and Positioning System ordering information

Product Code	Description	Units of Measure	Pcs/case	HCPCS Code
1400800	Tortoise Intuitive Turning & Positioning System - (1) Tortoise PAD (38" x 58") and (1) Z-Flo™ Fluidized Positioner (16" x 30")	CA	1	A9270
1400801	Tortoise Intuitive Turning & Positioning System - Bariatric - (1) Tortoise PAD (49" x 58") and (1) Z-Flo™ Fluidized Positioner (25" x 36")	CA	1	E0621
1400802	Tortoise Intuitive Turning & Positioning System - Prone - (1) Tortoise PAD (38" x 58"), (1) Prone PAD (32" x 35 x 5"), and (2) Z-Flo™ Fluidized Positioners (25" x 36") + (11" x 22")	CA	1	A9270

Reference: 1. Trevellini, A. Chenel. Connecting the dots: pressure ulcer prevention and safe patient handling. Poster presentation 2. Elling, R. Use of a positive air displacement safe patient handling system to reduce facility acquired pressure injury. Poster presentation. 3. Kass, J. Economic Impact of a Safe Patient Handling and Mobility System on Staff and Safety in a Long term Acute Care Unit. Poster Presentation.

Mölnlycke® Z-Flex™ Fluidized Heel Boot

Offloading to minimize risk of heel pressure injury



Comfortable and durable

- Inner lining aides patient comfort and wicks away moisture
- Constructed with rip-stop nylon material

Built-in Z-Flo™ Fluidized Positioner

- Contours around vulnerable Achilles tendon
- Reduces incidents of pressure injuries via effective heel offloading

Easily adjustable

- Elastic shin straps
- Ankle support straps

Foot gate

- Easy access for skin assessments without boot removal

How Z-Flex™ Fluidized Heel Boot work

The Mölnlycke Z-Flex Fluidized Heel Boot delivers easy to use, comfortable heel protection that increases patient satisfaction. Within Z-Flex, an air chamber encourages neutral alignment while creating lift of the heel via Positive Air Displacement. For added protection, our patented Z-Flo™ Fluidized Positioner contours around the vulnerable Achilles tendon, protecting and comforting your patient while further enhancing heel offloading.

Benefits of Z-Flex™ Fluidized Heel Boots

- Designed to offload the heel and maintain an anatomically neutral foot position
- Built-in foot gate provides easy access for skin assessments without boot removal
- Z-Flo contours around vulnerable Achilles tendon
- Adjustable ankle straps accommodate a variety of leg sizes
- Compatible with sequential compression devices
- Integrated air chamber reduces the risk of hyperextension of the knee
- Drives high patient and staff satisfaction²

Areas of use

- Heels

Z-Flex™ Fluidized Heel Boot order information

Product Code	Description	Unit of Meas.	Qty. per UOM	HCPCS code
1400122	Z-Flex™ Fluidized Boot - heel protector with gate and ankle strap	CA	2	E0191
1400123	Z-Flex™ Fluidized Boot - heel protector with gate and ankle strap	CA	8	E0191

Ordering information

Mepilex® Border Flex†



Product Code	Size	Pcs/box	Pcs/case	HCPCS
595200	3" x 3" (7.5 x 7.5 cm)	5	50	A6212
595300	4" x 4" (10 x 10 cm)	5	50	A6212
595400	6" x 6" (15 x 15 cm)	5	50	A6213
595600	6" x 8" (15 x 20 cm)	5	50	A6213

Mepilex® Border Flex Oval†



Product Code	Size	Pcs/box	Pcs/case	HCPCS
583300	5.1" x 6.3" (13 x 16 cm)	5	35	A6212
583400	6" x 7.5" (15 x 19 cm)	5	45	A6213
583500	3.1" x 4" (7.8 x 10 cm)	5	50	A6212

Mepilex® Border Flex Lite†



Product Code	Size	Pcs/box	Pcs/case	HCPCS
581011	1.6" x 2" (4 x 5 cm)	10	70	A6212
581101	2" x 5" (5 x 12.5 cm)	5	65	A6212
581200	3" x 3" (7.5 x 7.5 cm)	5	70	A6212
581300	4" x 4" (10 x 10 cm)	5	50	A6212
581500	6" x 6" (15 x 15 cm)	5	50	A6213

Mepilex® Border Sacrum †



Product Code	Size	Pcs/box	Pcs/case	HCPCS
282055	6.3" x 7.9" (16 x 20 cm)	10	50	A6213
282455	8.7" x 9.8" (22 x 25 cm)	10	40	A6213

Mepilex® Border Ag†



Product Code	Size	Pcs/box	Pcs/case	HCPCS
395290	3" x 3" (7.5 x 7.5 cm)	5	70	A6212
395390	4" x 4" (10 x 10 cm)	5	50	A6212
395490	6" x 6" (15 x 15 cm)	5	50	A6213
395690	6" x 8" (15 x 20 cm)	5	45	A6213

Mepilex® Border Sacrum Ag†



Product Code	Size	Pcs/box	Pcs/case	HCPCS
382090	7.2" x 7.2" (18 x 18 cm)	5	40	A6213
382490	9.2" x 9.2" (23 x 23 cm)	5	25	A6213

Mepilex® Border Heel †



Product Code	Size	Pcs/box	Pcs/case	HCPCS
282790	8.7" x 9.1" (22 x 23 cm)	10	30	A6210

Mepilex® Border Post-Op†



Product Code	Size	Pcs/box	Pcs/case	HCPCS
496300	4" x 6" (10 x 15 cm)	10	100	A4649
496405	4" x 8" (10 x 20 cm)	5	25	A4649
496455	4" x 10" (10 x 25 cm)	5	30	A4649
496605	4" x 12" (10 x 30 cm)	5	25	A4649
496650	4" x 14" (10 x 35 cm)	5	50	A4649

Mepilex® Border Post-Op Ag†



Product Code	Size	Pcs/box	Pcs/case	HCPCS
498300	4" x 6" (10 x 15 cm)	5	70	A6212
498400	4" x 8" (10 x 20 cm)	5	25	A6212
498450	4" x 10" (10 x 25 cm)	5	35	A6212
498600	4" x 12" (10 x 30 cm)	5	25	A6213
498650	4" x 14" (10 x 35 cm)	5	60	A6213

Mepilex®†



Product Code	Size	Pcs/box	Pcs/case	HCPCS
294199	4" x 4" (10 x 10 cm)	5	70	A6209
294090	4" x 5" (10 x 12 cm)	5	50	A6210
294299	4" x 8" (10 x 20 cm)	5	45	A6210
294399	6" x 6" (15 x 15 cm)	5	25	A6210
294499	8" x 8" (20 x 20 cm)	5	20	A6211
294500	8" x 20" (20 x 50 cm)	2	12	A6211

Mepilex® Heel†



Product Code	Size	Pcs/box	Pcs/case	HCPCS
288100	5" x 8" (13 x 20 cm)	5	25	A6210

Mepilex® Ag†



Product Code	Size	Pcs/box	Pcs/case	HCPCS
287100	4" x 4" (10 x 10 cm)	5	70	A6209
287090	4" x 5" (10 x 12 cm)	5	70	A6210
287200	4" x 8" (10 x 20 cm)	5	45	A6210
287300	6" x 6" (15 x 15 cm)	5	25	A6210
287400	8" x 8" (20 x 20 cm)	5	20	A6211
287500	8" x 20" (20 x 50 cm)	2	10	A6211

† Packaged sterile in single packs

Ordering information

Mepilex® XT†



Product Code	Size	Pcs/box	Pcs/case	HCPCS
211100	4" x 4" (10 x 10 cm)	5	70	A6209
211200	4" x 8" (10 x 20 cm)	5	45	A6210
211300	6" x 6" (15 x 15 cm)	5	25	A6210
211400	8" x 8" (20 x 20 cm)	5	20	A6211

Mepilex® Lite†



Product Code	Size	Pcs/box	Pcs/case	HCPCS
284090	2.4" x 3.4" (6 x 8.5 cm)	5	70	A6209
284190	4" x 4" (10 x 10 cm)	5	50	A6209
284390	6" x 6" (15 x 15 cm)	5	50	A6210
284599	8" x 20" (20 x 50 cm)	4	24	—

Mepilex® Transfer†



Product Code	Size	Pcs/box	Pcs/case	HCPCS
294899	6" x 8" (15 x 20 cm)	5	40	A6210
294599	8" x 20" (20 x 50 cm)	4	24	A6211

Mepilex® Transfer Ag†



Product Code	Size	Pcs/box	Pcs/case	HCPCS
394190	4" x 5" (10 x 12.5 cm)	5	50	A6210
394890	6" x 8" (15 x 20 cm)	10	50	A6210
394590	8" x 20" (20 x 50 cm)	2	12	A6211

Lyofoam® Max†



Product Code	Size	Pcs/box	HCPCS
603200	3" x 3.4" (7.5 x 8.5 cm)	10	A6209
603201	4" x 4" (10 x 10 cm)	10	A6209
603203	4" x 8" (10 x 20 cm)	10	A6210
603204	6" x 6" (15 x 15 cm)	10	A6210
603205	6" x 8" (15 x 15 cm)	10	A6210
603206	8" x 8" (20 x 20 cm)	10	A6211

Lyofoam® Max T†



Product Code	Size	Pcs/box	HCPCS
603207	3.6" x 3.6" (9 x 9 cm)	10	—

Mepitel® One†



Product Code	Size	Pcs/box	Pcs/case	HCPCS
289100	2" x 3" (5 x 7.5 cm)	10	70	A6206
289300	3" x 4" (7.5 x 10 cm)	10	40	A6206
289500	4" x 7" (10 x 18 cm)	10	70	A6207
289700	6.8" x 10" (17 x 25 cm)	5	40	A6208
289750	10.8" x 20" (27.5 x 50 cm)	2	14	A6208

Mepitel®†



Product Code	Size	Pcs/box	Pcs/case	HCPCS
290599	2" x 3" (5 x 7.5 cm)	10	50	A6206
290799	3" x 4" (7.5 x 10 cm)	10	40	A6206
291099	4" x 7" (10 x 18 cm)	10	70	A6207
292005	8" x 12" (20 x 30 cm)	5	30	A6208

Mepitel® Ag†



Product Code	Size	Pcs/box	Pcs/case	HCPCS
390590	2" x 3" (5 x 7.5 cm)	10	50	A6206
390790	3" x 4" (7.5 x 10 cm)	10	40	A6206
390090	4" x 5" (10 x 12 cm)	10	60	A6207
391090	4" x 7" (10 x 18 cm)	10	70	A6207
392090	8" x 12" (20 x 30 cm)	5	30	A6208
392059	8" x 20" (20 x 50 cm)	2	12	A6208

Exufiber®†



Product Code	Size	Pcs/box	Pcs/case	HCPCS
709900	2" x 2" (5 x 5 cm)	10	40	A6196
709901	4" x 4" (10 x 10 cm)	10	80	A6197
709902	4" x 4.8" (10 x 12 cm)	10	60	A6197
709903	6" x 6" (15 x 15 cm)	10	60	A6197
709909	0.8" x 17.7" (2 x 45 cm)	5	25	A6196

Exufiber® Ag+†



Product Code	Size	Pcs/box	Pcs/case	HCPCS
603421	2" x 2" (5 x 5 cm)	10	40	A6196
603425	4" x 4" (10 x 10 cm)	10	60	A6197
603422	4" x 4.8" (10 x 12 cm)	10	60	A6197
603423	6" x 6" (15 x 15 cm)	10	60	A6197
603424	8" x 12" (20 x 30 cm)	5	20	A6198
603420	0.8" x 17.7" (2 x 45 cm)	5	20	A6199

Ordering information

Melgisorb® Plus ‡



Product Code	Size	Pcs/box	Pcs/case	HCPCS
252000	2" x 2" (5 x 5 cm)	10	100	A6196
252200	4" x 4" (10 x 10 cm)	10	100	A6196
252500	4" x 8" (10 x 20 cm)	10	100	A6197
253500	1.25 x 17.7" (3 x 45 cm)	5	50	A6199

Melgisorb® Ag‡



Product Code	Size	Pcs/box	Pcs/case	HCPCS
255050	2" x 2" (5 x 5 cm)	10	100	A6196
255100	4" x 4" (10 x 10 cm)	10	100	A6196
255150	6" x 6" (15 x 15 cm)	10	100	A6197
255200	8" x 12" (20 x 30 cm)	5	50	A6198
255600	1.2" x 18" (3 x 44 cm)	10	100	A6199

Normlgel® Ag^



Product Code	Size	Pcs/box	Pcs/case	HCPCS
350450	1.5 oz (45 gm)	10	30	A6248

^ Normlgel® Ag is unsterile and packed in tubes

Mesalt®



Product Code	Size	Pcs/box	Pcs/case	HCPCS
285580	4" x 4" (2" x 2" folded)	30	240	A6209
285780	6" x 6" (3" x 3" folded)	30	240	A6222
286080	8" x 8" (4" x 4" folded)	30	180	A6228
285280	3/4" x 39" Ribbon	10	80	A6260

Alldress®



Product Code	Size	Pcs/box	Pcs/case	HCPCS
265329	4" x 4" (10 x 10 cm)/ 2" x 2" (5 x 5 cm)	10	70	A6203
265349	6" x 6" (15 x 15 cm)/ 4" x 4" (10 x 10 cm)	10	100	A6203 A6209
265369	6" x 8" (15 x 20 cm)/ 4" x 6" (10 x 15 cm)	10	120	A6204

‡ Packaged sterile in single packs

Mextra® Superabsorbent



Product Code	Size	Pcs/box	Pcs/case	HCPCS
610000	5" x 5" (12.5 x 12.5 cm)	10	50	A6196
610100	5" x 7" (12.5 x 17.5 cm)	10	40	A6197
610200	5" x 9" (12.5 x 22.5 cm)	10	90	A6197
610300	7" x 9" (17.5 x 22.5 cm)	10	40	A6197
610400	9" x 11" (22.5 x 27.5 cm)	10	40	A6198
610500	9" x 13" (22.5 x 32.5 cm)	10	40	A6198

Mepore® Pro‡



Product Code	Size	Pcs/box	Pcs/case	HCPCS
670990	3.6" x 4" (9 x 10 cm)	40	320	A6203
671090	3.6" x 6" (9 x 15 cm)	40	320	A6203
671190	3.6" x 8" (9 x 20 cm)	30	180	A6203
671290	3.6" x 10" (9 x 25 cm)	30	180	A6203
671390	3.6" x 12" (9 x 30 cm)	30	270	A6203

Mepore®



Product Code	Size	Pcs/box	Pcs/case	HCPCS
670800	2.5" x 3" (6 x 7 cm)	60	480	—
670900	3.6" x 4" (9 x 10 cm)	50	400	—
671000	3.6" x 6" (9 x 15 cm)	50	400	—
671299	3.6" x 10" (9 x 25 cm)	30	180	—
671300	3.6" x 12" (9 x 30 cm)	30	270	—
671400	3.6" x 14" (9 x 35 cm)	30	180	—

Mepore® Film ordering information



Product Code	Size	Pcs/box	Pcs/case	HCPCS
270600	2.4" x 2.6" (6 x 7 cm)	100	600	A6257
271500	4" x 5" (10 x 12.7 cm)	70	210	A6258
272500	4" x 10" (10 x 25 cm)	20	100	A6258
273000	6" x 8.5" (15 x 21.5 cm)	10	50	A6258

Mepitel® Film ordering information‡



Product Code	Size	Pcs/box	Pcs/case	HCPCS
296170	2.4" x 2.6" (6 x 7 cm)	10	50	?
296270	4" x 4.8" (10 x 12 cm)	10	70	?
296470	4" x 10" (10 x 25 cm)	10	50	?
296670	6" x 8" (15 x 20 cm)	10	70	?

Ordering information

Mepiform®



Product Code	Size	Pcs/box	Pcs/case
293199	1.6" x 12" (4 x 30 cm)	5	50
293299	2" x 3" (5 x 7.5 cm)	5	50
293499	4" x 7" (10 x 18 cm)	5	50

Mepitac® ‡



Product Code	Size	Rolls/box	HCPCS
298300	3/4" x 118" (2 x 300 cm)	12	A4452
298400	1.5" x 59" (4 x 150 cm)	12	A4452

Mefix®



Product Code	Size	Pcs/box	Pcs/case	HCPCS
310299‡	1" x 11 yds (2.5 cm x 10 m)	1	40	A4450
310599	2" x 11 yds (5 cm x 10 m)	1	40	A4450
311099	4" x 11 yds (10 cm x 10 m)	1	20	A4450
311599	6" x 11 yds (15 cm x 10 m)	1	15	A4450
312000	8" x 11 yds (20 cm x 10 m)	1	10	-

Setopress® ‡



Product Code	Size	Pcs/box	Pcs/case	HCPCS
3505	4" x 138" (10cm x 3.5m)	1	12	A6452

Tubifast® 2-Way Stretch™



Product Code	Line	Product	Limb size	Bandage Width
2434	RED	Small Limbs	3.5" - 7.1" (9 - 18 cm)	1.5" (3.5 cm)
2436	GREEN	Small and medium limbs	5.5" - 9.5" (14 - 24 cm)	2" (5 cm)
2438	BLUE	Large limbs	9.5" - 15.8" (24 - 40 cm)	3" (7.5 cm)
2440	YELLOW	Extra-large limbs, heads, children's trunks	13.8" - 25.2" (35 - 64 cm)	4.5" (10.75 cm)
2444	PURPLE	Large adult trunks	25.2" - 51.2" (64 - 130 cm)	8" (20 cm)

‡ Packaged sterile in single packs

Tubifast® Garments



Product Code	Description	Age/Size
992007	Vest	6-24 months
992008	Vest	2-5 years
992009	Vest	5-8 years
992010	Vest	8-11 years
992011	Vest	11-14 years
992012	Tights	6-24 months
992013	Leggings	2-5 years
992014	Leggings	5-8 years
992015	Leggings	8-11 years
992016	Leggings	11-14 years
992017	Socks	One size fits all 2-14 yrs
5922	Gloves	Extra Small Child
5923	Gloves	Small Child
5921	Gloves	Med/Lg Child - Sm/Med Adult
5920	Gloves	Medium/Large Adult

Recommended Fitting Sizes:

Vests, Tights			
	6-24 months	2 - 5 years	
Height	74 - 86 cm	86-110 cm	
Inside Leg	28 - 34 cm	34 - 47 cm	
Arm Length	25 - 29.5 cm	29.5 - 35.5 cm	
Vests, Leggings			
	5 - 8 years	8 - 11 years	11 - 14 years
Height	110 - 128 cm	128 - 146 cm	146 - 164 cm
Inside Leg	47 - 58 cm	58 - 68 cm	68 - 77 cm
Arm Length	35.5 - 42 cm	42 - 49 cm	49 - 57.5 cm
Socks - One size fits all 2 - 14 years			

Ordering information

Tubigrip®



Shade	Product Code			HCPCS
	Natural	Beige		
Size	3.28' (1m)	32.81' (10m)	32.81' (10m)	
A Infant feet and arms	-	1435	-	A6457
B Small hands and arms	1520	1436	1449	A6457
C Medium arms, small ankles	1521	1443	1450	A6457
D Large arms, medium ankles, small knees	1522	1437	1451	A6457
E Large ankles, medium knees, small thighs	1528	1434	1448	A6457
F Large knees, medium thighs	1523	1438	1452	A6457
G Large thighs	-	1439	1453	A6457
J Small trunks	-	1440	-	A6457
K Small/Medium trunks	-	1441	-	A6457
L Large trunks	-	1442	-	A6457

Tubigrip® sizes

Size	Min. limb circum. (inch)	Max. limb circum. (inch)	Min. limb circum. (cm)	Max. limb circum. (cm)	Sub-bandage pressure (mmHg)
A	3.9	5.7	10	14.5	20 - 30
B	5.7	11.4	14.5	29	
C	8.7	13.8	22	35	
D	10.2	15.7	26	40	10 - 20
E	11.4	18.1	29	46	
F	13.8	20.9	35	53	
G	15.7	24.4	40	62	5 - 15
J	21.3	32.3	54	82	
K	27.6	44.5	70	113	
L	41.7	58.7	106	149	

Dermafit®



Size	Description	Product Code for 10m roll (32.81')	Bandage Size
A	Infant feet and arms	131935	1.75" (4.4cm)
B	Small hands and limbs	131936	2.00" (5.1cm)
C	Adult hands and limbs	131943	2.75" (7.0cm)
D	Large arms and legsx	131937	3.25" (8.3cm)
E	Legs and small thighs	131934	3.75" (9.5cm)
F	Large knees and thighs	131938	4.25" (10.8cm)
G	Large thighs	131939	5.50" (14.0cm)
J	Small trunks	131940	7.00" (17.8cm)
K	Medium trunks	131941	8.50" (21.6cm)
L	Large trunks	131942	12.50" (31.8cm)

Mölnlycke® Z-Flo™ Fluidized Positioner: Adult



Product Code	Description	Size	Unit of Meas.	Qty. per UOM	HCPCS Code
1401001	Small Positioner with 2 Tabs	11" x 22"	EA	1	E0190
1401003	Medium Positioner with Tab	16" x 30"	EA	1	E0190
1401005	Large Positioner	25" x 36"	EA	1	E0190
1401007	Small Positioner	12" x 20"	CA	8	E0190
1401008	Small Positioner with Cover	12" x 20"	CA	8	E0190
1401011	Medium Positioner	16" x 30"	EA	1	E0190
1400902	Adult Positioner Kit - (1) Medium Positioner (16" x 30") and (1) Small Positioner (12" x 20")		EA	1	—

The information provided in this brochure is not to be construed as the practice of medicine or substituted for the independent medical judgment of a patient's treating physician. Information contained herein, including but not limited to suggestions for product wear time, product selection and suggested use is based on generalizations and does not consider the unique characteristics of an individual's wound. Each patient's physician shall remain solely responsible for assessing the severity of patient wounds, determining the appropriate treatment, and managing treatment of the wound. For additional information, please refer to the applicable product insert or contact Mölnlycke Health Care US, LLC at 1-800-843-8497

Ordering information



Mölnlycke® Z-Flo™ Fluidized Positioner Neonatal and Pediatric

Product Code	Description	Size	Unit of Meas.	Qty. per UOM	HCPCS Code
1400227	Small Positioner with Cover	7" x 10"	CA	12	-
1400239	Medium Positioner with Cover	9" x 15"	CA	6	-
1400200	Large Positioner with Cover	12" x 20"	CA	6	E0190
1400222	Small Tube with 3 Disposable Covers (w/ 18 disposable covers)	30" x 6.5"	CA	6	-
1400224	Large Tube Positioner with Cover	60" x 6.5"	CA	6	-
1400206	Medium Full Body Positioner with Cover	16" x 24"	CA	6	E0190
1400213	Large Full Body Positioner with Cover	20" x 30"	CA	4	-
1400304	Medium Full Body Kit - (1) Medium Full Body (16" x 24"), (1) Small Positioner (7" x 10"), (2) Covers and (2) Straps (20")		CA	6	-



Mölnlycke® Tortoise® Sling

Product Code	Product Name	Description	Units	HCPCS Code
1400805	Mölnlycke Tortoise Sling System - Standard	Sling PAD and Z-Flo™ Positioner	1	E0621
1400806	Mölnlycke Tortoise Sling System - Bariatric	Sling PAD and Z-Flo™ Positioner	1	E0621
1400807	Mölnlycke Tortoise Sling - Standard	Sling PAD	2	E0621
1400808	Mölnlycke Tortoise Sling - Bariatric	Sling PAD	1	E0621



Mölnlycke® Tortoise® Intuitive Turning and Positioning System

Product Code	Description	Units of Meas.	Pcs/ case	HCPCS Code
1400800	Tortoise Intuitive Turning & Positioning System - (1) Tortoise PAD (38" x 58") and (1) Z-Flo Fluidized Positioner (16" x 30")	CA	1	A9270
1400801	Tortoise Intuitive Turning & Positioning System - Bariatric - (1) Tortoise PAD (49" x 58") and (1) Z-Flo™ Fluidized Positioner (25" x 36")	CA	1	E0621
1400802	Tortoise Intuitive Turning & Positioning System - Prone - (1) Tortoise PAD (38" x 58"), (1) Prone PAD (32" x 35 x 5"), and (2) Z-Flo Fluidized Positioners (25" x 36") + (11" x 22")	CA	1	A9270



Z-Flex™ Fluidized Heel Boot

Product Code	Description	Unit of Meas.	Qty. per UOM	HCPCS code
1400122	Z-Flex Fluidized Boot - heel protector with gate and ankle strap	CA	2	E0191
1400123	Z-Flex Fluidized Boot - heel protector with gate and ankle strap	CA	8	E0191

Online Healthcare Professional Education



CE COURSES



TOOLS



WEBINARS

Connect2Know[®] advances the performance in healthcare by equipping professionals with continuing education through:

- FREE Accredited CE courses
- Evidence-based resources
- Expert webinars
- Research briefs on hot topics
- Link to patient wound education website
- Product training and compliance

Delivering reliability through a strong supply chain

Successful outcomes start here

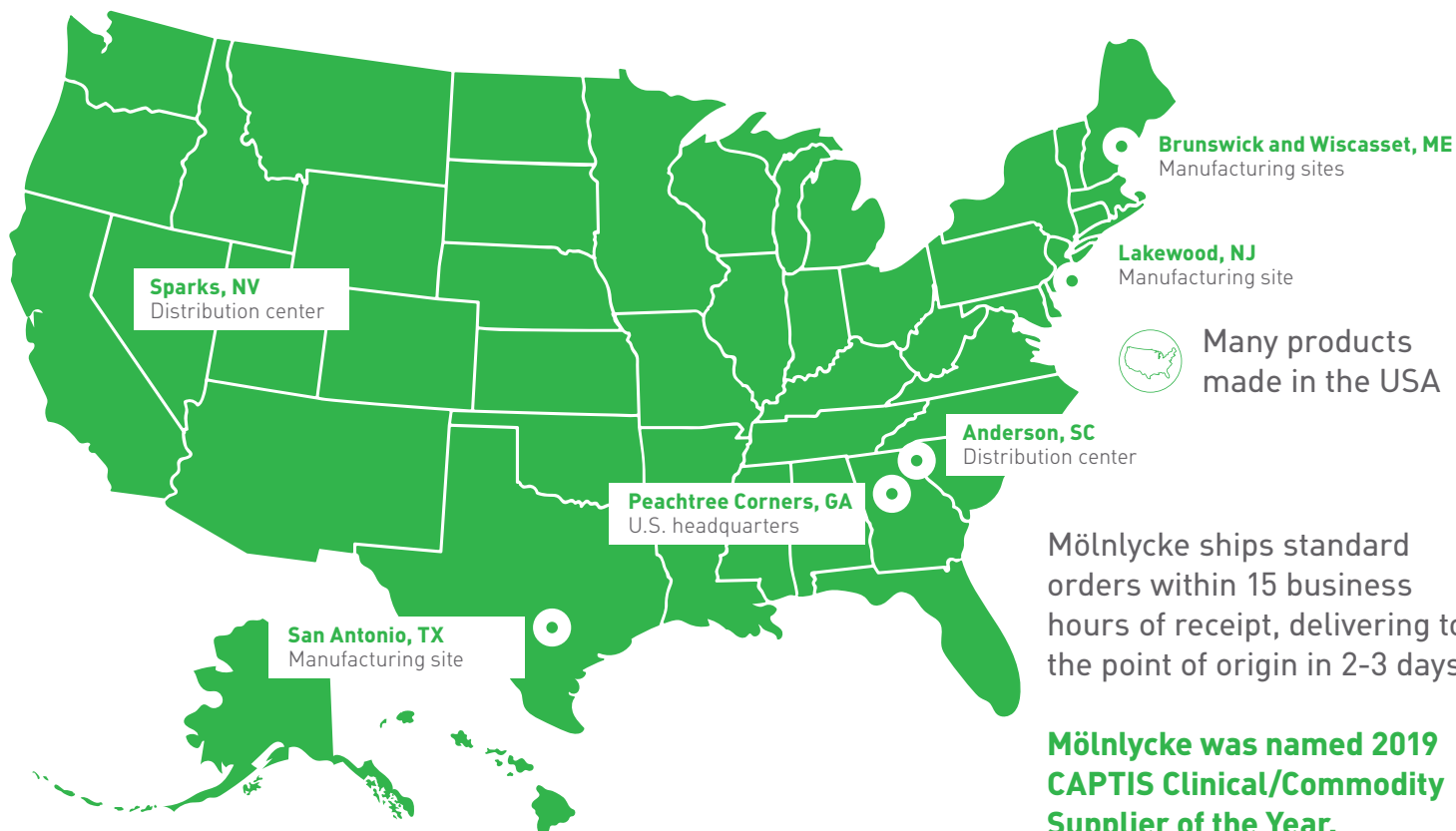
When you work with Mölnlycke, you can count on the solutions you need, when you need them.

We've designed a manufacturing and distribution process for high availability, order efficiency and fast delivery.

We maintain **duplicate manufacturing locations** for many of our products; in fact, many of our solutions are produced in the U.S.

Where possible, we prioritize dual sourcing among carefully selected, and **geographically diverse**, suppliers.

Distribution centers are **strategically located** to expedite access throughout the U.S. and provide **flexibility** around weather- or disaster-related travel disruptions.





We're here to help you, when you need us.
Call your Mölnlycke Health Care Representative or Clinical Specialist.

1-800-843-8497 | www.molnlycke.us | 5445 Triangle Pkwy, Ste 400, Peachtree Corners, GA, 30092

The Mölnlycke Health Care, Mepilex, Mepitel, Mepiform, Mepitac, Safetac, Exufiber, Melgisorb, Normlget, Alldress, Mepore, Mesalt, Mefix, Lyofoam, Mextra, Tubifast, Dermafit, Tubigrip, Setopress, EZ Derm, Tortoise, and Z-Flex trademarks, names and logo types are registered globally to one or more of the Mölnlycke Health Care Group of Companies. Distributed by Mölnlycke Health Care US, LLC, Peachtree Corners, Georgia 30092. © 2023 Mölnlycke Health Care AB. All rights reserved. 1-800-882-4582. -Mölnlycke Health Care wound care products can serve as integral components of wound management programs. If infection is suspected, product use may be continued if proper infection treatment is initiated and if recommended by a physician.

DISCLAIMER: This document is not a complete guide on all matters related to reimbursement, nor does Mölnlycke Health Care guarantee that its use will result in payment for services. This information is subject to change over time, and may be incorrect at any time following publication. The reader is encouraged to independently verify data and confirm the applicability of any coding or billing practice with applicable payers prior to submitting claims. The reader is solely responsible for compliance with applicable laws.